

Cockroach Inspection Guide

How to Tell If You Have Roaches

By DoMyOwn staff

OVERVIEW

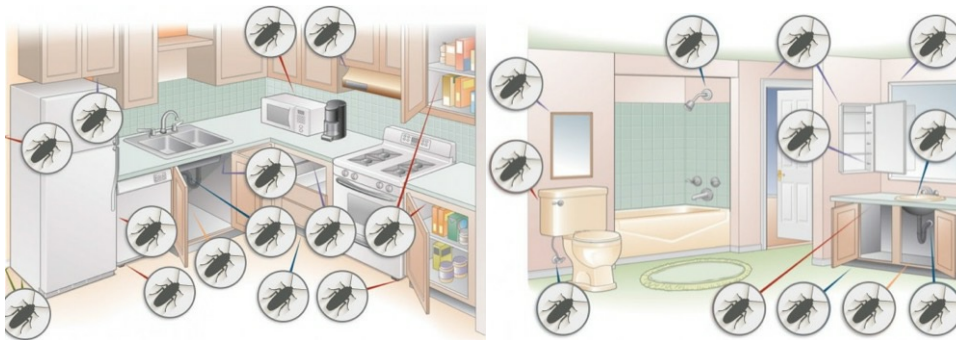
Learn Where Cockroaches Hide & How to Find Them



Roaches are nocturnal so roach inspections are usually conducted at night. Most roach infestations start in the kitchen and/or bathroom so your inspection should be concentrated in these areas. You will be looking for adult roaches, juvenile roaches, roach eggs and roach feces.

Tools needed:

- Flashlight



Continue reading our guide to learn more about how to inspect for roaches, or click on one of the methods below to enhance your roach inspection.

- [Where to Inspect](#)
- [Look for Other Evidence](#)

STEP 1 **Where to Inspect** Where Do Roaches Hide?

[Video Instructions](#)



<https://www.youtube.com/watch?v=l-kXfEmupXc>

Most roach species prefer dark, moist areas to hide and breed. Typically kitchens and bathrooms are the first rooms to be infested.

Use your flashlight to look for roaches behind or under refrigerators, stoves, microwaves, dishwashers, sinks, or cabinets.

Roaches may also be found in or around floor drains, inside the motor areas of refrigerators and microwaves, behind wall mounted pictures or clocks, under floor mats, behind wall paper and in cracks and crevices in cabinets and around walls.

STEP 2 **Look For Other Evidence**
Search For Roach Droppings & Cockroach Eggs

Video Instructions



<https://www.youtube.com/watch?v=4E4rSYnMLa4>

Roach Droppings

In addition to knowing [what a cockroach looks like](#), you will also be able to detect roaches by the feces (droppings) they leave behind. So what does roach poop look like anyway? Roach feces are often compared to coffee grounds and are usually left in the areas they frequent. Check inside cabinets, around the refrigerator, in edges of drawers and in other suspected hiding places.



Cockroach Eggs

Roaches will lay egg cases called oothecae. These cylindrical egg cases can vary in size from about 5mm to 10mm and are

tan to dark brown. Some species of roaches will drop these egg cases in the same areas that you have checked for the roaches and the roach feces.

