

# Powdery Mildew Treatment Guide

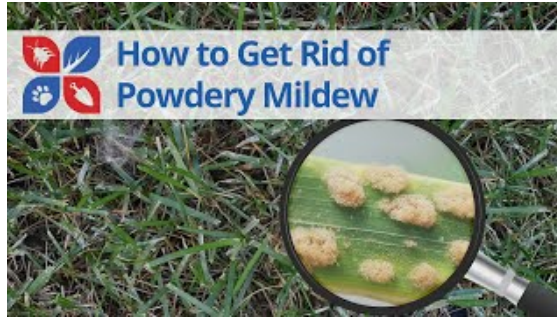
## Learn How to Get Rid of & Control Powdery Mildew

By DoMyOwn staff

### OVERVIEW

#### The Cure For Powdery Mildew Lawn Disease

#### Video Instructions



<https://www.youtube.com/watch?v=NcPggW7MLyI>

Preventative fungicide treatments are most effective for this lawn disease. Applications of a fungicide to active powdery mildew areas will only protect new or unaffected grass, which will stop the spread of the disease, but will not get rid of existing powdery mildew.

### STEP 1 Apply A Preventative Application

It's important to apply the appropriate fungicide before powdery mildew has taken hold of your lawn.

The best time of the year for this disease to develop is in the spring and fall, when temperatures are moderate and humidity is relatively high. Your local extension office can help you pinpoint the right time of year to treat for powdery mildew in your area.

If you missed the window before disease development, keep in mind that this disease will not harm your turf, and you can apply a preventative product the following season to control this unsightly disease from taking hold in your yard.

#### Products needed for Step 1

---



#### Howard Johnsons Eagle 0.39% Specialty Fungicide

On Sale!

**\$38.07**

Was: ~~\$42.30~~

★★★★☆ (3)

### STEP 2 Treat Surrounding Areas

If powdery mildew is in full effect in certain areas in your lawn, you can still treat the surrounding turf, especially any in shaded areas that would be more susceptible to disease development.

Fungicide applications at this point will not cure the existing disease, but will help protect the emerging and unaffected grass, which is important in maintaining an even, green, and pleasing appearance.

#### Products needed for Step 2

---



### Howard Johnsons Eagle 0.39% Specialty Fungicide

On Sale!


**\$38.07**

Was: ~~\$42.30~~

★★★★★ (3)

### Powdery Mildew Treatment Infographic (Click to Enlarge)

**Powdery Mildew Treatment** Lawn Care Guides by DoMyOwn.com



**Signs of Powdery Mildew**

This disease has a white powdery appearance. A lawn that is infected will turn yellow and then progress to tan and brown in color. A stressed lawn that is severely infected can become thinned and will start to die.

**Powdery Mildew Growing Conditions:**  
Rapidly high humidity, lower temperatures (usually Spring/Fall)

**Treatment**

- 1 Apply a preventative fungicide**
  - Preventative fungicide treatments are most effective for this disease. Applying fungicides labeled for Powdery Mildew disease before it has taken hold of your lawn will give you the greatest chance of controlling it.
- 2 Treat surrounding areas**
  - Even if Powder Mildew is in full effect in certain areas of your lawn, you can still treat the surrounding turf to prevent it from spreading.

**Tip** Keep in mind that this disease will not harm your turf, and you can apply a preventative product the following season to control this unsightly disease from taking hold in your yard.

**DoMyOwn.com** Give our pros a call: 866-581-7378  
Mon-Fri 9am-5pm ET