

Boxelder Bug Identification Guide

What Do Boxelder Bugs Look Like?

By DoMyOwn staff

OVERVIEW



Boxelder bugs are overwintering pests, meaning they will try to enter your home in the fall in search of a warm place to live during the winter. Homeowners will typically see boxelder bugs around their doors and windows in the fall and once again in the spring as the pests emerge from their hiding spots around the home in search of food.

If you believe you may have [boxelder bugs](#) on your property, use this guide to make a positive identification. If you do have box elder bugs, our guide on [how to get rid of boxelder bugs](#) will explore your treatment options.

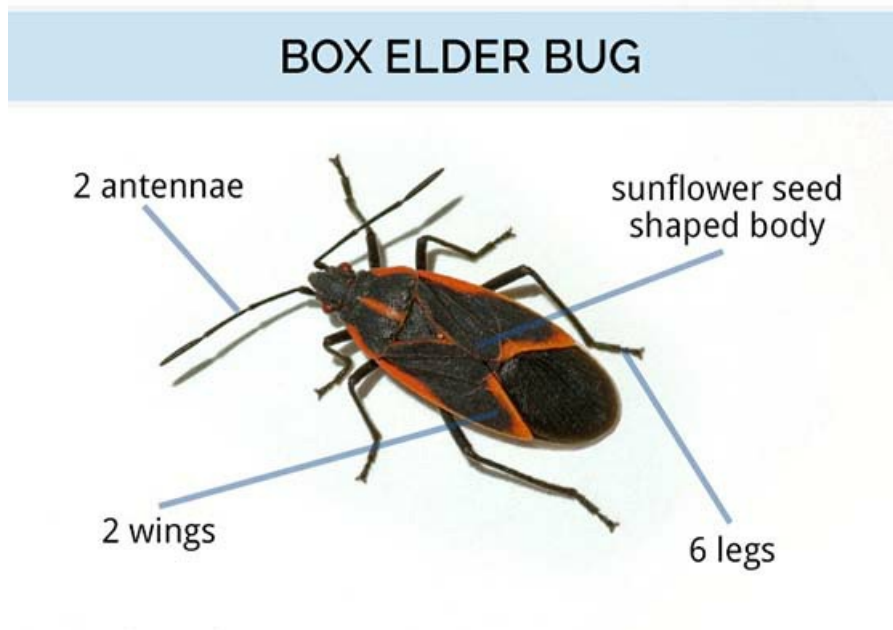
SIZE



Boxelder bugs are only 0.06 inches (1.5 millimeters) long when they are young nymphs. They can grow up to 0.4 to 0.55

inches long as adults.

SHAPE



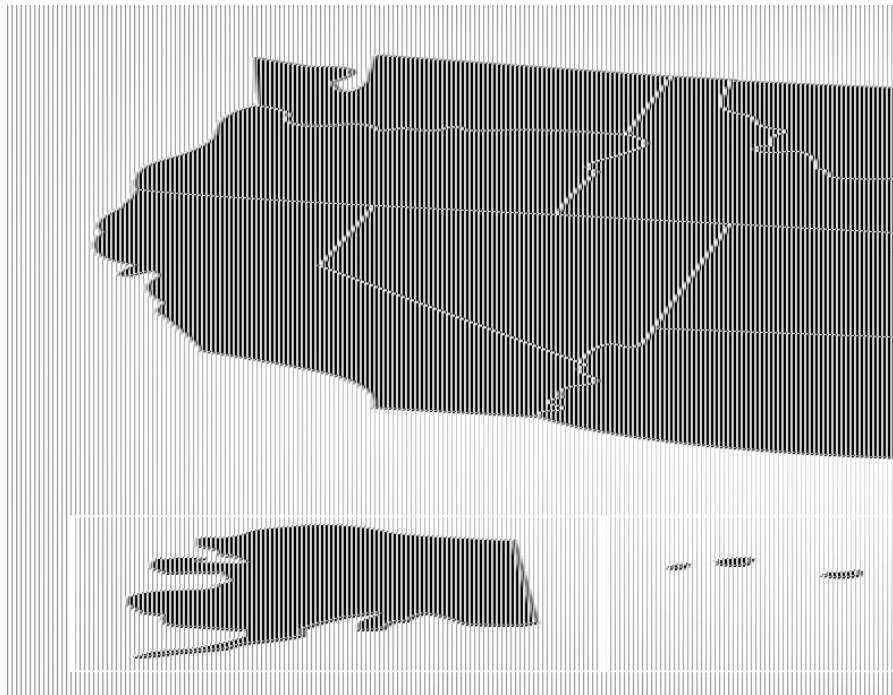
Boxelder bugs have bodies shaped like sunflower seeds. They have two antennae on the top of their heads, 6 legs, and flat wings.

COLOR



Boxelder bugs are black with red lines along their bodies and wings. Boxelder babies, or nymphs, are red when they first hatch and turn black as they age.

RANGE



Boxelder bugs can be found across the United States, especially where boxelder and maple trees grow as they will eat the leaves of these trees.

If you have seen boxelder bugs in or around your home, use our guide on [where boxelder bugs hide](#) to determine if you have an active infestation. Click the right arrow below to read more.