

Aphid Identification Guide

What Do Aphids Look Like?

By DoMyOwn staff

OVERVIEW



Aphids are tiny, soft bodied pests that suck the sap out of plants. They then excrete the digested sap as "honeydew," a substance that attracts ants and can cause mold and fungi to grow on plants.

These small pests can create a surprising amount of damage to gardens and crops if left untreated. Use this guide on what aphids look like to determine if you have these pests in your yard. Then, read our guide on [how to get rid of aphids](#) for treatment options.

SIZE

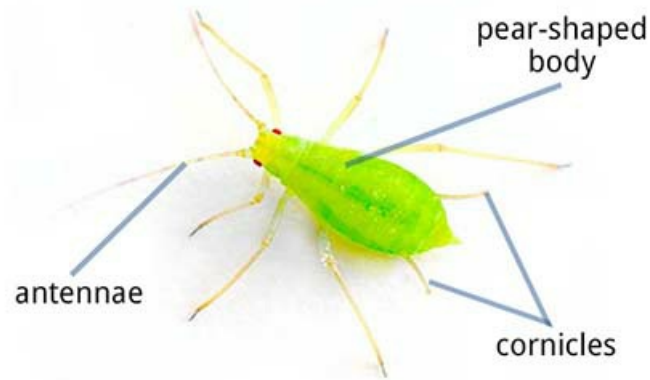
APHID SIZE



Aphids are very small, usually growing to only 1/8 of an inch long.

SHAPE

APHID



Aphids have soft, pear-shaped bodies. Each aphid has two antennae, two eyes at the front of their bodies, and long, thin, two-jointed legs. Most aphids are wingless, but some aphids born in the fall may have wings.

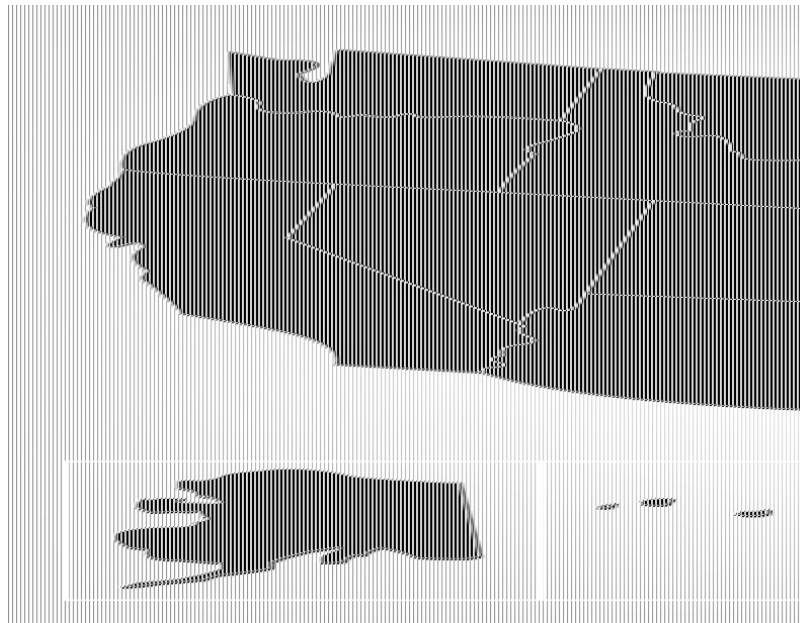
Aphids are often distinguished from other pests by the tubes that protrude from the back of their bodies, known as cornicles. Aphids use the cornicles to secrete honeydew.

COLOR



Aphids range in color. They can be green, orange, black, pink, brown, or almost colorless.

RANGE



Aphids can be found across the United States.

Have aphids? Read part 2 of our 4-part aphid guide to find out [where aphids may be hiding in your garden](#). Click the right arrow below to read more.