

How to Measure Your Lawn's Square Footage

What to know to buy the right amount of product, without extra waste

By DoMyOwn staff

When you are treating your lawn for [weeds](#) and [disease](#) or adding a nutrient rich [fertilizer](#), you want to make sure you are selecting the right product for your lawn. But many homeowners get stuck when it comes to a very simple part of the purchasing process - how much product do I need?

As [lawn care products](#) come in a range of sizes, finding the right-sized product to make sure you have enough for your lawn is crucial. Once you know how large (or small) your yard is, you will never need to second guess the amount of product you need to purchase.

Below are two ways to measure your lawn's square footage.

Video Instructions



https://www.youtube.com/watch?v=kDex_rD9zgQ

METHOD **1** Length Times Width



The first way to calculate your yard's square footage is to use simple math.

To do this for your yard, you will need to measure around the edges of your lawn to obtain the length and the width. Use a long flexible tape measure, a measuring wheel, or a piece of rope that you know the length of to determine your measurements. Once you have the measurements, multiply the length of your lawn times the width of your lawn.

For example - if your front lawn is 80 feet wide by 35 feet long, your square footage would be calculated as:

$$80 \times 35 = 2,800 \text{ square feet}$$

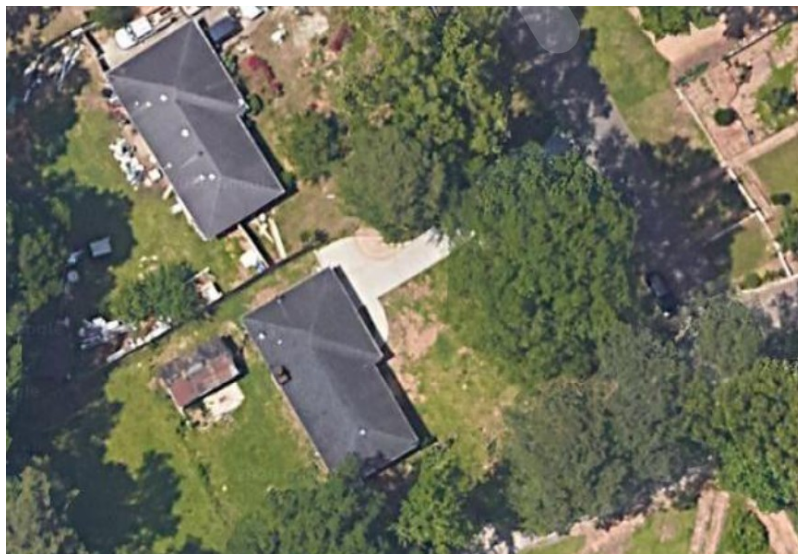
If your lawn is oddly shaped, you can divide the lawn into separate sections (front, side, and back) and determine the square footage of each section, then add those measurements together for the full square footage.

Example: Front: $80 \times 35 = 2,800$ sq. ft.; Side: $20 \times 10 = 2,000$ sq. ft.; Back: $75 \times 25 = 1,875$ sq. ft.;
Total: $2,800 + 2,000 + 1,875 = 6,675$ square feet

PRO TIP

Write down your square footage measurements and save in a safe place for future reference. This way, you won't ever need to measure again and can place orders yearly with peace of mind.

METHOD 2 Online Satellite Calculators



The second option is to use an online satellite square footage calculator. A quick Google search of "lawn square footage calculator" will result in several websites that use satellite imagery and their own tools to determine square footage.

These websites are easy to use, however they may not be able to provide the full measurement of your lawn, especially if you have multiple trees or a covered patio, pagoda, or porch on your property. If you are not able to determine all the areas using the satellite calculator, you may need to physically measure those areas as described above to obtain your lawns complete square footage.

Once you know the square footage of your lawn, you can refer to the product labels of any lawn product to determine how much you need to purchase. Most products use 1,000 square feet as the basis of measurement, so if 1 bag of fertilizer covers 1,000 square feet of lawn and your lawn is 2,800 square feet, you will need to purchase 3 bags of fertilizer.

Have questions on how to decide how much product to purchase for your lawn care needs or how to select the best product for your lawn? Give our lawn care experts a call at 866-581-7378 or email support@domyown.com.