

Pantry Pest Identification

What Do Pantry Pests Look Like?

By DoMyOwn staff

OVERVIEW



Pantry Pests are a group of insect pests such as moths and beetles that feed on stored foods. There are hundreds of different kinds of pantry pests, however, the most common species include meal moths, flour beetles, weevils, and grain moths.

In this 4-part guide, we'll help you identify a pantry pest, show you where and how to look for a pantry pest infestation, how to do pest control treatments to [get rid of pantry pests](#), and steps you can take to prevent them from returning in the future.

SHAPE



What do pantry pests look like?

Due to the variety of pantry pests which exist, there is not a specific shape that can represent every pest that you may encounter. Although there is not a universal shape, some pantry pests are common and easily identifiable:

- **Meal moths** are a very common pantry pest with two longish antennae and wings which span across its body. These wings are greyish near the moth's body and reddish on the edge of the wings.
- **Warehouse beetles** are a common pantry pest which you may find within your pantry and these beetles have two antennae, an oval body shape, and wings which are not as prominent as the meal moth.
- **Flour beetles** are another pantry beetle that you might find. They are flat-like, typically have an oval shape, and they have antennae. Flour beetles are slightly more elongated in comparison to the warehouse beetle and their antennae are

different in shape.

The shape of pantry pests also depend on their lifecycle stage. Pantry pests typically start as larvae or grubs. At this stage, these pests are very tiny and hard to tell apart, but they will be worm-shaped.

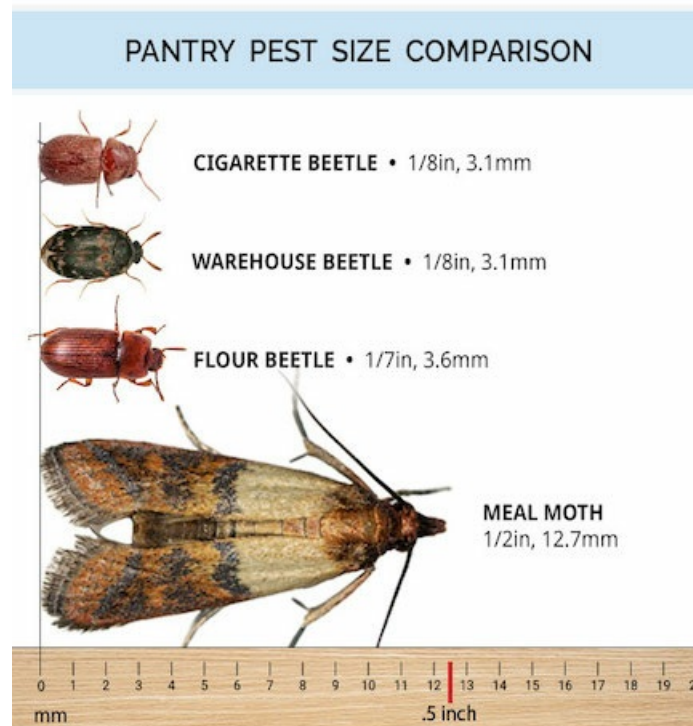


Both beetle and moth larvae will appear to have three pairs of legs, but the larvae of a moth will also have a leg-like structure further down its body. Once these pests have matured, they are easily distinguishable as adults.

COLOR

Pantry pests can be a variety of colors such as brown, dark red, or even black. In the larval stage, a pantry pest may appear white or yellow color.

SIZE



Identification of immature pantry pests may be more difficult than identifying mature pantry pests. Pantry pests typically start off as larvae or small wormlike/grublike pests. As they mature, pantry pests become small flying moths or beetles.

Some common lengths of adult pantry pests include:

- Meal moths: 1/2-inch long
- Flour beetles: 1/7-inch long
- Cigarette beetles: 1/8-inch long
- Warehouse beetles: 1/8-inch long

Pantry Pest or Clothes Moth?



Meal Moth



Clothes Moth

While pantry pests include meal moths, meal moths are not the same as clothes moths. Differences include:

- Clothes moths tend to be smaller and hairier than a pantry pest meal moth.
- Clothes moths will have a diet that consists of animal fibers or products such as wool, silk, and leather.
- Clothes moths will have furry looking wings that are typically one color, such as light brown.

Continue reading this 4-part pantry pest treatment guide to learn the [signs of a pantry pest infestation](#)