

Absolute ant control, inside and out

 **BASF**

We create chemistry



Alpine® WSG

Water Soluble Granule Insecticide

Alpine WSG Water Soluble Granule gives you the power and flexibility to control ants at the source. Its flexible label allows for use both inside and outside, even off-structure, letting you go almost anywhere pests do. In addition to ants, it's an excellent choice for bed bugs, fleas, brown marmorated stink bugs, kudzu bugs, house flies, German cockroaches and more!

- Flexible label that allows surface applications and curative ant broadcast application to lawns.
- Non-pyrethroid, nonrepellent solution that prevents pests from being locked indoors.
- Clear, odorless solution that mixes easily and will not clog equipment.
- Approved for use in food handling areas.

- **Transfer:** Shows strong transfer with ants, even at a ratio of 1 donor ant per 50 recipients.
- **Undetectable Formulation:** A nonrepellent product that controls many of the most common insect pests, including ants, bed bugs, fleas, brown marmorated stink bugs, kudzu bugs, house flies and German cockroaches.
- **Non-Staining Solution:** Dissolves into a clear solution that does not stain upon application.
- **Surface Application:** Label allows surface and curative broadcast applications for ants to yards, lawns and landscaping.
- **Application Interval Flexibility:** Minimal restrictions on how often treatments may be applied.



Alpine WSG 500g
Article# 59014217
4 x 500g

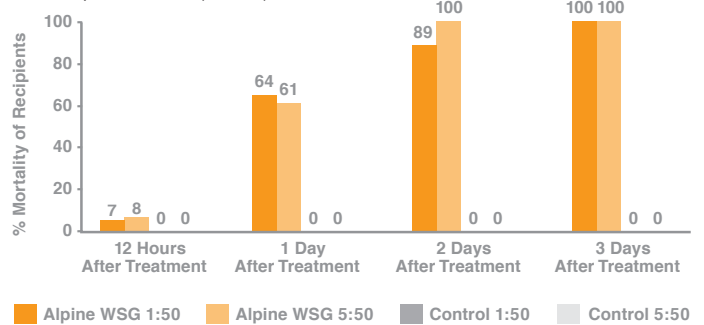


Alpine WSG 200g
Article# 59014203
4 x 200g

For more information, visit: pestcontrol.basf.us

Alpine Transfer – Black Carpenter Ants

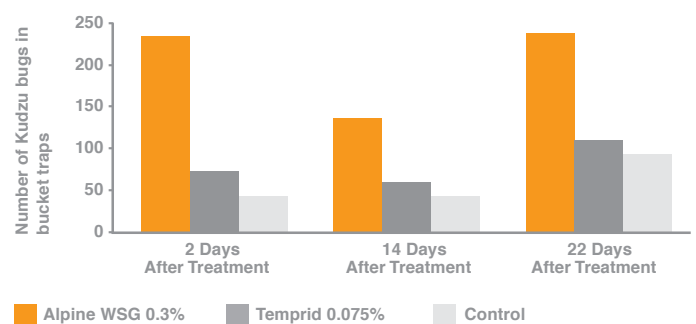
Average Percent Mortality of Recipients due to Transfer Effect with Alpine WSG (0.1%)*



* The label states 20g per gallon for carpenter ants. Dr. Buczkowski, Purdue, 2013

Alpine – Kudzu Bugs

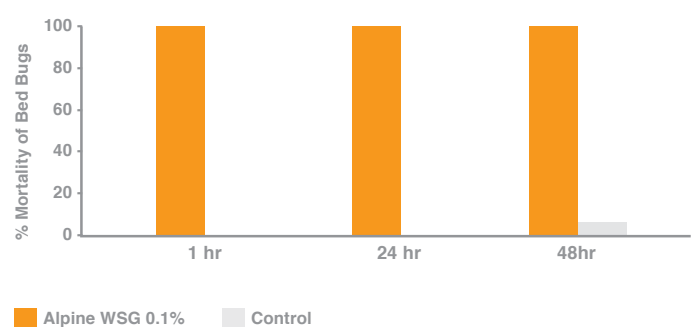
Number of Dead Kudzu Bugs After Gutter Application



Daniel R. Suiter and Monica L. Townsend, University of Georgia Griffin Campus, 2013

Alpine Residual – Bed Bugs

Percent Mortality of Bed Bugs with Direct Spray Alpine WSG (0.1%)*



* The label states 30g per gallon for bed bugs. Granovsky Associates, Inc., 2010

Alpine® WSG

Water Soluble Granule Insecticide

Always read and follow label directions.

Alpine is a registered trademark of BASF Corporation. © 2020 BASF Corporation. All rights reserved. PSS 20-1303