

# ADD BEAUTY AND VALUE WITH MANAGED NATURALIZED AREAS

## NATURALIZED AREAS CAN BE BOTH BEAUTIFUL AS WELL AS BENEFICIAL TO YOUR BOTTOM LINE

Requiring fewer resources for mowing, chemical application, and equipment wear, naturalized areas allow for greater focus on playable surfaces while creating habitat for native birds, butterflies, pollinators and other wildlife. Naturalized areas also act as a biological filter for surrounding bodies of water and reduce the carbon footprint through decreased fuel consumption needs.

Although the benefits of naturalized areas are very real, there are some misconceptions when it comes to maintaining these spaces. Contrary to its name, naturalized areas do require attention to keep unwanted and unsightly invasive weeds at bay.

To achieve balance between naturalized, yet managed areas, Nufarm suggests following a naturalized areas spray program. This guide serves as reference for maintaining established naturalized areas and offers tips for adding new naturalized areas to your golf course.

## USE THESE HELPFUL TIPS WHEN PLANNING YOUR NATURALIZED AREAS

- Location is key: add naturalized areas where there is minimal-to-no golf play.
- Start with a clean slate: use a non-selective herbicide to clear weeds from the designated naturalized area before planting.
- Let nature help pick the plant: select grasses that are native to your region, use the table below as a guide. If possible, plant established mature grasses.

### NATIVE GRASS SPECIES BY REGION

COOL-SEASON	TALL PRAIRIE	SHORT PRAIRIE	SUB-TROPICAL
Alkali grass	Big bluestem	Alkaligrass	Bahiagrass
Autumn bentgrass	Blue lovegrass	Blue grama	Eastern gamagrass
Blue lyme grass	Broom sedge	Buffalograss	Gulf bluestem
California melic grass	Coastal bluestem	Idaho fescue	Muhly grass
California oatgrass	Elliott's lovegrass	Inland saltgrass	Saltgrass
Canada wild rye	Indiangrass	Needle-and-thread grass	Sand cordgrass
Dune wild rye	Little bluestem	Sandberg bluegrass	Marsh cordgrass
Hard fescue	Muhly grass	Sideoats grama	
Poverty grass	Prairie cordgrass	Silver bluestem	
Red top bentgrass	Prairie dropseed	Western wheatgrass	
Purple needlegrass	Purple lovegrass		
Riverbank wild rye	Rough dropseed		
Sheep fescue	Sand dropseed		
Tufted hairgrass	Switchgrass		
Virginia wild rye	Weeping lovegrass		
Wavy hairgrass	Wiregrass		

Table: Skorulski, Jim. 2015. USGA Green Section Record. September 4. 53(17); p. 1-7

# EXCEL

NUFARM LEADERSHIP PROGRAM

## INVESTING IN THE FUTURE



"EXCEL HAS BROUGHT A NEW ENERGY TO MY CAREER WHICH EXCITES ME AND BENEFITS THE PEOPLE AROUND ME."

— Joshua Lemons, Assistant Superintendent  
Olympic Hills Golf Club, Eden Prairie, Minnesota

Founded by Nufarm and GCSAA, the EXCEL Leadership Program offers leading-edge development opportunities for assistant superintendents chosen from many excellent applicants. Each class participates for three years, learning leadership in personal, career, community and industry stewardship that will impact the future of golf course turf management.

[NUFARM.COM/USTURF](http://NUFARM.COM/USTURF)



Aloft® GS SC Insecticide is an EPA Restricted-Use Pesticides. Always read and follow label directions. ©2020 Nufarm. 4-Speed®, Anuew™, Cheetah®, Millennium Ultra®, Q-Ball™ and Sure Power® are trademarks of Nufarm. Aloft® and SureGuard® are trademarks of Valent U.S.A. LLC. Arena® and Celerio® are trademarks of Sumitomo Chemical Company, Ltd. 19-TO-0020 12/19

# NATURALIZED AREAS PROGRAM

## GOLF SOLUTIONS



Naturalized areas add beauty to a course and habitat for wildlife. Although naturalized areas require less maintenance than other course areas, care is still needed. Nufarm suggests a simple spray program to keep weeds at bay and native stands pure.

[Nufarm.com/usturf](http://Nufarm.com/usturf)



Grow a better tomorrow

# A PLAN TO KEEP NATIVE GRASS STANDS PURE

SOLUTION	FALL START WITH A MOW	SPRING MOW IF NEEDED	IN SEASON DO NOT MOW
<b>SURE POWER®</b> SELECTIVE HERBICIDE	APPLY 2 WEEKS AFTER MOW		SPOT SPRAY BROADLEAF WEEDS
<b>MILLENNIUM ULTRA® 2</b> SELECTIVE HERBICIDE	OR APPLY 2 WEEKS AFTER MOW	USE TO SAVE MILKWEED, APPLY WITH A PRE-EMERGENT	OR SPOT SPRAY BROADLEAF WEEDS
<b>4-SPEED® XT</b> SELECTIVE HERBICIDE		OR APPLY WITH A PRE-EMERGENT	
<b>SUREGUARD® SC</b> SELECTIVE HERBICIDE	KEEP NATIVE AREAS CLEAN THROUGHOUT THE WINTER		SPOT SPRAY CRABGRASS
<b>Q-BALL™</b> SELECTIVE HERBICIDE			SPOT SPRAY SEDGES
<b>CELERO®</b> SELECTIVE HERBICIDE			THIN AREAS OPTIONAL PER NEED
<b>CHEETAH® PRO</b> NON-SELECTIVE HERBICIDE		CHINCH BUG AND WORM CONTROL OPTIONAL PER NEED AND SITE HISTORY	
<b>ALOFT®</b> INSECTICIDE		OR PREVENTIVE AND CURATIVE GRUB CONTROL OPTIONAL PER NEED AND SITE HISTORY	
<b>ARENA®</b> INSECTICIDE			
<b>ANUEW™</b> PLANT GROWTH REGULATOR		APPLY 6 OZ TO HOLD BACK GROWTH	

## SURE POWER® HERBICIDE

Sure Power® swiftly strikes down more than 250 challenging broadleaf weeds in naturalized areas, including Canada thistle, ground ivy and wild violet, with results visible within two to three days. One fall application will keep naturalized areas weed free through winter.

## MILLENNIUM ULTRA® 2 HERBICIDE

Millennium Ultra® 2 “melts” tough weeds, even thistle, without leaving unsightly dead plants behind. Millennium Ultra 2 is also gentle on milkweed, allowing it to re-flower after initial suppression – ideal for Monarch butterfly habitats.

## 4-SPEED® XT HERBICIDE

4-Speed® XT combines the power of four actives to deliver faster, broader weed control with good tolerance to established grasses. Working quickly in cooler weather, 4-Speed XT knocks down broadleaf weeds in as little as 48 hours.

## SUREGUARD® SC HERBICIDE

Save on labor, SureGuard® SC keeps non-turf areas weed free for eight+ months. Apply SureGuard SC to landscape settings or on dormant Bermudagrass for excellent winter weed control. It binds tightly to soil, easing runoff concerns.

## Q-BALL™ HERBICIDE

**NEW** Q-Ball™ herbicide rolls over crabgrass, foxtail, and more. A simple one-use rate eliminates 90% of crabgrass escapes within 7 days or tank-mix with 4-Speed XT or Millennium Ultra 2 for a spot spray combo that tackles nearly any weed.

## CELERO® HERBICIDE

Spot spray Celero® herbicide for superior control of post-emerge sedges, including kyllinga. Celero contains imazosulfuron, a systemic sulfonylurea (SU) herbicide that translocates down to the roots for tough sedge control.

## CHEETAH® PRO NON-SELECTIVE HERBICIDE

Cheetah® Pro non-selective herbicide provides fast, effective control. Spot treat with Cheetah Pro to take out challenging broadleaf and grassy weeds – even those resistant to glyphosate and multiple herbicide classes.

## ALOFT® INSECTICIDE

Aloft® insecticide effectively combats insect pests. Prevent troublesome turfgrass insects – including white grubs – with a single early treatment or knock down existing pests with flexible application options from April to September. Aloft can also be used as a perimeter treatment to keep pests from course encroachment.

## ARENA® INSECTICIDE

Long-lasting Arena® provides preventive and curative activity for outstanding control of chinch bugs, white grubs and a broad spectrum of other insects. Treat naturalized areas or apply as a barrier to keep playable surfaces pest-free.

## ANUEW™ PGR

Anuew™ is a leading turf growth regulator for greens and other playable areas. It works longer in cool-season, more evenly regulates mixed Poa and bentgrass stands, and works faster in warm-season turf. Consider a spring application of Anuew in naturalized areas to hold back native grass growth.

### DO YOUR PART, BEE RESPONSIBLE

#### CONSIDER ADDING POLLINATOR ZONES

Nufarm is diligent in its support of environmental stewardship, pollinator safety, and the appropriate use of management tools. We encourage adding pollinator zones and are here to help responsibly manage these zones – and all other course areas too.

#### FOUR FAST TIPS

1. Create pollinator-specific “zones” separate from naturalized areas or landscape beds. Areas around tee boxes and water stations are often ideal location candidates.
2. While cosmos, yarrow and baby’s breath are common on courses and attractive to bees, be sure to select pollinator-favorite species that are native to your region.
3. Consult local conservation groups as they can be helpful guides in plant selection and other tips specific to your soil and climate conditions.
4. Minimize bee exposure by applying during “low flight” periods and avoid applications during plant bloom. When possible, choose insecticides with short residual activity.

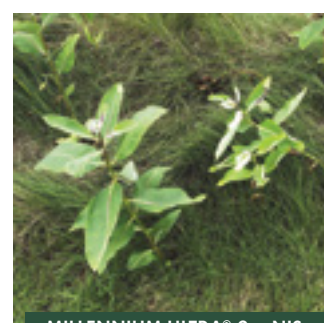
### MONARCHS, MILKWEED, MILLENNIUM ULTRA 2

#### SAVE MILKWEED WITH MILLENNIUM

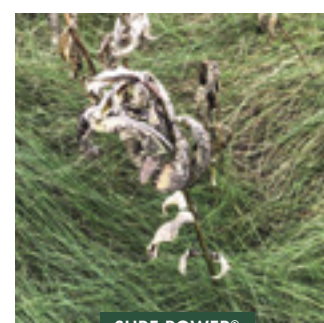
Unlike other selective herbicides, Millennium Ultra 2 is easy on milkweed. Milkweed provides habitat for monarch butterflies, which makes Millennium a naturalized fit for weed control in pollinator zones.



UNTREATED



MILLENNIUM ULTRA® 2 + NIS



SURE POWER®