

Trouble Shooting

Symptom: Dust Leaking Around Cap

- Solution:**
- Tighten cap.
 - Replace seal (#MDR-8)

Symptom: Not Enough Dust

- Solution:**
- Turn unit in hand until the siphon is resting in dust—tilt slightly forward.
 - Clean siphon holes in MDR-9
 - Add marbles to bearings into container to reduce clumping.
 - Refill dust.
 - Replace worn plunger gland (#DR-020)—see section V.D.

Symptom: Dust Leaking Around Handle

- Solution:**
- Replace worn plunger gland (#DR-020).

Satisfaction Guaranteed: Your B&G Mini-Dust-R is guaranteed for your complete satisfaction. If you are not completely satisfied with the use and function of this tool, you may return it for repairs, replacement or a full refund within 60 days of purchase.

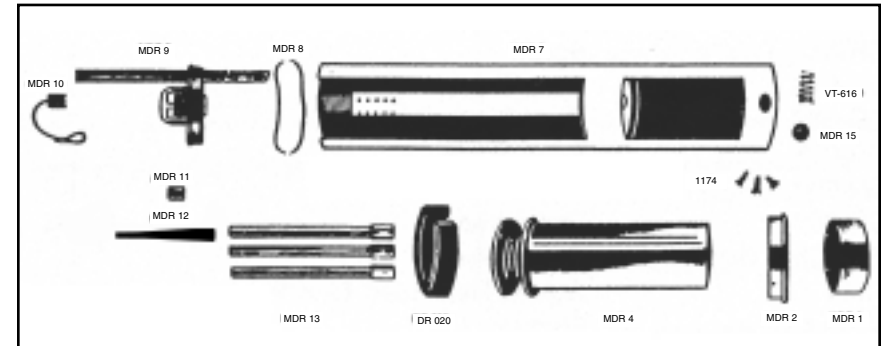
If you need to return equipment to B&G for repairs, replacement or refund, you may find it the most convenient to have your distributor ship the unit back to us. Be sure to attach to the unit your name, address and the problem you had using the equipment. If it is not convenient to send the unit back through your distributor, you can send it directly to us. Please call 800-544-8811 before shipment to receive a Return Goods Authorization number (RGA)*. Please clean and empty the equipment before returning.

B&G Equipment Company
c/o Repairs Department
135 Region South Drive
Jackson, GA 30233

*Return Authorization: Always notify and approve exchanges with your distributor before returning equipment to B&G.



Model 1151-M Mini-Dust-R User's Manual



<u>Part #</u>	<u>Description</u>
MDR-1	Cap
MDR-2	Collar
1174	Screws, ea.
MDR-4	Plunger
DR-020	Gland
MDR-7	Barrel
MDR-8	Seal
MDR-9	Closure
MDR-10	Stop
MDR-11	Offset Fan
MDR-12	Straw Tip
MDR-13	Extension (3)
VT-616	Spring
MDR-15	Ball

Safety Precautions

- Always wear proper protection as stated on material labels when using granulars or dusts.
- Be sure to keep stoppers in tips while transporting.
- Always be aware of the position of the siphon tubes—far more dust can be ejected than expected.
- Be sure to keep stopper in the tube not being used to avoid misapplications.
- Always follow label directions for the materials being used.

Suggested Uses

The intended use of the B&G held held dusters is to assist in the application of dusts and granulars in cracks, crevices, voids, perimeter granular applications, rodent burrows and runways as well as surface applications. Various tips and extensions are included to assist with difficult treatment locations.

Before You Start

1. **Assembling The Tool:**
The only assembly needed is to select the desired tip and/or extensions.
2. **Tip Selection and Spray Patterns:**
Any of the tips included with this unit can be used for dust applications. However, many of the small tips and extensions will not allow the passage of granular formulations.
3. **Adjusting Output Volume:**
The volume of dust or granulars can be adjusted by rotating the position of the siphon. When the siphon is rotated to the top (above the material), less material will be ejected. More material can be obtained by rotating the unit in your hand and placing more and more of the siphon into the dust/granular.

Operating Instructions

1. **Filling and Mixing:**
Unscrew the closure from the pump barrel assembly.
2. **Application**
 - Install desired tip and/or extension.
 - Rotate the unit in your hand until properly position siphon assembly.
 - Insert tip or extension into or against void for treatment.
 - Pull out the plunger and slowly depress inward.

Care and Maintenance

1. **Plunger Lubrication:**
Place a small amount of graphite powder into the air port at the handle 1 time per week.
2. **Keeping Joints Sealed**
Keep cap seal and top free of dust or granulars when threading container. This will limit the wear and necessary replacement of parts.
3. **Clumping:**
 - Avoid contact of dust with liquids—clumping can clog up the siphon holes.
 - Place a few ball bearings or marbles in the container with the dust to keep the material stirred.
4. **Not Enough Pressure Output:**
 - Keep the cap tight on the container to reduce air loss.
 - If the pump fails and needs repair, replace gland (#DR-020) by removing three screws (#1174) at the collar (#MDR-2). Use caution when removing collar from the barrel—the spring (#VT-616) may come loose. Withdraw plunger (#MDR-4) while observing the position of the gland. The new gland should be carefully worked into the barrel as the plunger is reinserted into the barrel. The gland should form a continuous ring against the barrel interior. A new gland will need a small amount of graphite powder initially.

Trouble Shooting

Symptom: Dust Leaking Around Cap

- Solution:**
- Tighten cap.
 - Replace seal (#DR-006)

Symptom: Not Enough Dust

- Solution:**
- Turn unit in hand until the siphon is resting in dust—tilt slightly forward.
 - Clean siphon holes in DR-027
 - Add marbles to bearings into container to reduce clumping.
 - Refill dust.
 - Replace worn plunger gland (#DR-020)—see section V.D.

Symptom: Dust Leaking Around Handle

- Solution:**
- Replace worn plunger gland (#DR-020).
 - Replace valve (DR-008)

Symptom: Dust Leaking Around Base of Injector Tubes

- Solution:**
- Tighten locknut (DR-028).
 - Replace O-ring (#2273)
 - Replace Washer (DR-029)

Satisfaction Guaranteed: Your B&G Hand-Dust-R is guaranteed for your complete satisfaction. If you are not completely satisfied with the use and function of this tool, you may return it for repairs, replacement or a full refund within 60 days of purchase.

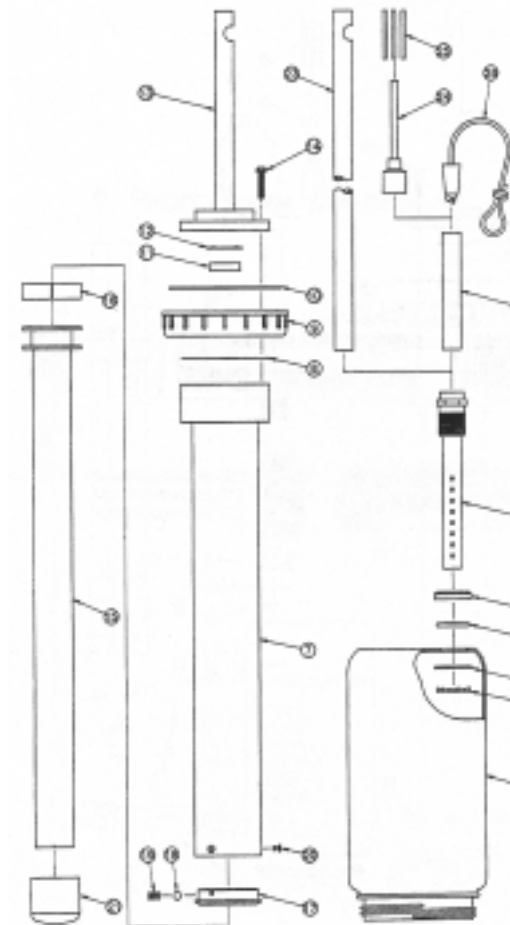
If you need to return equipment to B&G for repairs, replacement or refund, you may find it the most convenient to have your distributor ship the unit back to us. Be sure to attach to the unit your name, address and the problem you had using the equipment. If it is not convenient to send the unit back through your distributor, you can send it directly to us. Please call 800-544-8811 before shipment to receive a Return Goods Authorization number (RGA)*. Please clean and empty the equipment before returning.

B&G Equipment Company
c/o Repairs Department
135 Region South Drive
Jackson, GA 30233

*Return Authorization: Always notify and approve exchanges with your distributor before returning equipment to B&G.



Model 1152-A Hand-Dust-R User's Manual



Item No.	Part No.	Description	Qty. Unit
1	DR-003	Bottle - 1152-A Hand Dust-R	1
2	DR-027	Outlet	1
3	DR-025	Ring	1
4	2273	O-Ring	1
5	DR-029	Washer	1
6	DR-028	Locknut	1
7	DR-012	Barrel	1
8	DR-010	Seal, Barrel	1
9	DR-009	Cap, Bottle	1
10	29108249	Fogger Gasket	1
11	DR-008	Valve	1
12	DR-007	Plate, Valve	1
13	DR-005	Cap, Valve	1
14	1224	Screw, Hex Head #8 x 1"	6
15	MDR-4A	Plunger	1
16	DR-020	Gland, Pump	1
17	MDR-2	Collar	1
18	MDR-15	Ball	1
19	VT-616	Spring	1
20	1174	Screw, Flat Head #6 x 1/4	3
21	MDR-1	Cap	1
22	DR-002	Extension, Short	1
23	DR-011	Extension, Long	1
24	041	Tip, Pencil	1
25	042	Tip, Straw	3
26	DR-001	Stopper Assembly	1

Safety Precautions

- Always wear proper protection as stated on material labels when using granulars or dusts.
- Be sure to keep stoppers in tips while transporting.
- Always be aware of the position of the siphon tubes—far more dust can be ejected than expected.
- Be sure to keep stopper in the tube not being used to avoid misapplications.
- Always follow label directions for the materials being used.

Suggested Uses

The intended use of the B&G held held dusters is to assist in the application of dusts and granulars in cracks, crevices, voids, perimeter granular applications, rodent burrows and runways as well as surface applications. Various tips and extensions are included to assist with difficult treatment locations.

Before You Start

1. **Assembling The Tool:**
The only assembly needed is to select the desired tip and/or extensions.
2. **Tip Selection and Spray Patterns:**
Any of the tips included with this unit can be used for dust applications. However, many of the small tips and extensions will not allow the passage of granular formulations.
3. **Adjusting Output Volume:**
The volume of dust or granulars can be adjusted by rotating the position of the siphon. When the siphon is rotated to the top (above the material), less material will be ejected. More material can be obtained by rotating the unit in your hand and placing more and more of the siphon into the dust/granular.

Operating Instructions

1. **Filling and Mixing:**
Remove the 2 quart container from the cap assembly.
2. **Application**
 - Install desired tip and/or extension.
 - Rotate the unit in your hand until properly position siphon assembly.
 - Insert tip or extension into or against void for treatment.
 - Pull out the plunger and slowly depress inward.

Care and Maintenance

1. **Plunger Lubrication:**
Place a small amount of graphite powder into the air port at the handle 1 time per week.
2. **Keeping Joints Sealed**
Keep cap seal and top free of dust or granulars when threading container. This will limit the wear and necessary replacement of parts.
3. **Clumping:**
 - Avoid contact of dust with liquids—clumping can clog up the siphon holes.
 - Place a few ball bearings or marbles in the container with the dust to keep the material stirred.
4. **Not Enough Pressure Output:**
 - Keep the cap tight on the container to reduce air loss.
 - If the pump fails and needs repair, replace gland (#DR-020) by removing three screws (#1174) at the collar (#MDR-2). Use caution when removing collar from the barrel—the spring (#VT-616) may come loose. Withdraw plunger (#MDR-4A) while observing the position of the gland. The new gland should be carefully worked into the barrel as the plunger is reinserted into the barrel. The gland should form a continuous ring against the barrel interior. A new gland will need a small amount of graphite powder initially.

Trouble Shooting

Symptom: Dust Leaking Around Cap

- Solution:**
- Tighten cap.
 - Replace seal (#DR-006)

Symptom: Not Enough Dust

- Solution:**
- Turn unit in hand until the siphon is resting in dust—tilt slightly forward.
 - Clean siphon holes in DR-027
 - Add marbles to bearings into container to reduce clumping.
 - Refill dust.
 - Replace worn plunger gland (#DR-020)—see section V.D.

Symptom: Dust Leaking Around Handle

- Solution:**
- Replace worn plunger gland (#DR-020).
 - Replace valve (DR-008)

Symptom: Dust Leaking Around Base of Injector Tubes

- Solution:**
- Tighten locknut (DR-028).
 - Replace O-ring (#2273)
 - Replace Washer (DR-029)

Symptom: Not Getting Granulars Through Lower Siphon

- Solution:**
- Upper siphon assembly not plugged with stopper.
 - Not enough material—must fill above lower siphon assembly.

Satisfaction Guaranteed: Your B&G Long Reach Granular Dust-R is guaranteed for your complete satisfaction. If you are not completely satisfied with the use and function of this tool, you may return it for repairs, replacement or a full refund within 60 days of purchase.

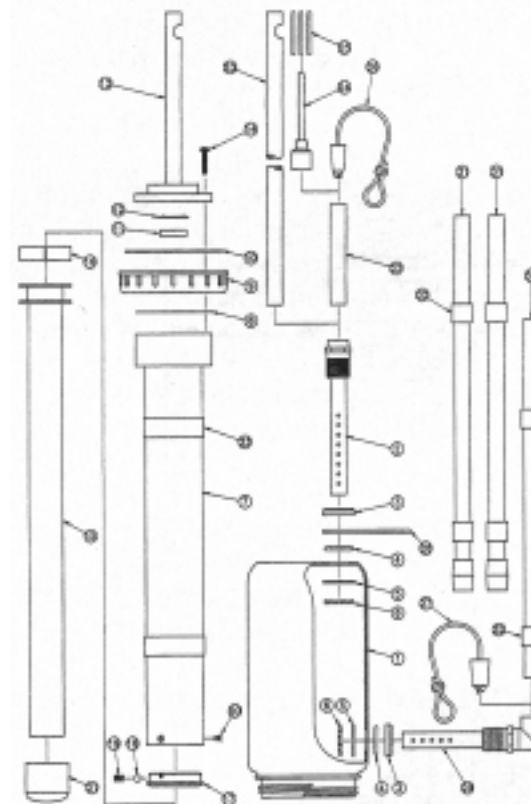
If you need to return equipment to B&G for repairs, replacement or refund, you may find it the most convenient to have your distributor ship the unit back to us. Be sure to attach to the unit your name, address and the problem you had using the equipment. If it is not convenient to send the unit back through your distributor, you can send it directly to us. Please call 800-544-8811 before shipment to receive a Return Goods Authorization number (RGA)*. Please clean and empty the equipment before returning.

B&G Equipment Company
c/o Repairs Department
135 Region South Drive
Jackson, GA 30233

*Return Authorization: Always notify and approve exchanges with your distributor before returning equipment to B&G.



Long Reach Granular Dust-R User's Manual



Item No.	Part No.	Description	Qty. Unit
1	24050001	Bottle - Long Reach Granular Dust-R	1
2	DR-027	Outlet	1
3	DR-025	Ring	1
4	2273	O-Ring	1
5	DR-029	Washer	1
6	DR-028	Locknut	1
7	DR-012	Barrel	1
8	DR-010	Seal, Barrel	1
9	DR-009	Cap, Bottle	1
10	29108249	Fogger Gasket	1
11	DR-008	Valve	1
12	DR-007	Plate, Valve	1
13	DR-005	Cap, Valve	1
14	1224	Screw, Hex Head #8 x 1"	6
15	MDR-4A	Plunger	1
16	DR-020	Gland, Pump	1
17	MDR-2	Collar	1
18	MDR-15	Ball	1
19	VT-616	Spring	1
20	1174	Screw, Flat Head #6 x 1/4	3
21	MDR-1	Cap	1
22	DR-002	Extension, Short	1
23	DR-011	Extension, Long	1
24	041	Tip, Pencil	1
25	042	Tip, Straw	3
26	DR-001	Stopper Assembly	1
27	24050010	Stopper Assembly	1
28	24050016	Clip, Extension	1
29	24050008	Outlet, Granular	1
30	24050012	Extension, Granular	1
31	24050011	Extension & Coupling	2
32	24050014	Velcro, Extension	6
33	24050015	Velcro, Barrel	2

Safety Precautions

- Always wear proper protection as stated on material labels when using granulars or dusts.
- Be sure to keep stoppers in tips while transporting.
- Always be aware of the position of the siphon tubes—far more dust can be ejected than expected.
- Be sure to keep stopper in the tube not being used to avoid misapplications. The Long Reach Granular Dust-R has 2 outlets.
- Always follow label directions for the materials being used.

Suggested Uses

The intended use of the B&G held held dusters is to assist in the application of dusts and granulars in cracks, crevices, voids, perimeter granular applications, rodent burrows and runways as well as surface applications. Various tips and extensions are included to assist with difficult treatment locations.

In addition to these applications, the Long Reach Granular Dust-R is also designed to apply either dusts or granulars in high areas such as aerial bee nests, attic soffits and eaves, tree voids, etc. The lower siphon tube assembly on the Long Reach Granular Dust-R can be used to apply granular materials in high areas. The upper siphon tube is used for low applications of granulars or any dust applications.

Before You Start

1. **Assembling The Tool:**
The only assembly needed is to select the desired tip and/or extensions.
2. **Tip Selection and Spray Patterns:**
Any of the tips included with this unit can be used for dust applications. However, many of the small tips and extensions will not allow the passage of granular formulations.
3. **Adjusting Output Volume:**
The volume of dust or granulars can be adjusted by rotating the position of the siphon. When the siphon is rotated to the top (above the material), less material will be ejected. More material can be obtained by rotating the unit in your hand and placing more and more of the siphon into the dust/granular. For the Long Reach Granular Dust-R, this method only pertains to the upper siphon assembly.

Operating Instructions

1. **Filling and Mixing:**
Remove the 2 quart container from the cap assembly.
2. **Application**
 - Install desired tip and/or extension.
 - Rotate the unit in your hand until properly position siphon assembly.
 - Insert tip or extension into or against void for treatment.
 - Pull out the plunger and slowly depress inward.

Care and Maintenance

1. **Plunger Lubrication:**
Place a small amount of graphite powder into the air port at the handle 1 time per week.
2. **Keeping Joints Sealed**
Keep cap seal and top free of dust or granulars when threading container. This will limit the wear and necessary replacement of parts.
3. **Clumping:**
 - Avoid contact of dust with liquids—clumping can clog up the siphon holes.
 - Place a few ball bearings or marbles in the container with the dust to keep the material stirred.
4. **Not Enough Pressure Output:**
 - Keep the cap tight on the container to reduce air loss.
 - If the pump fails and needs repair, replace gland (#DR-020) by removing three screws (#1174) at the collar (#MDR-2). Use caution when removing collar from the barrel—the spring (#VT-616) may come loose. Withdraw plunger (#MDR-4A) while observing the position of the gland. The new gland should be carefully worked into the barrel as the plunger is reinserted into the barrel. The gland should form a continuous ring against the barrel interior. A new gland will need a small amount of graphite powder initially.

Parts List and Operating Instructions

2250 ELECTRIC DUST-R

Construction Features:

110V AC power source
(also available in
220V/240V)

Will hold up to
3 pounds of dust

Roto-molded copolymer tank

Low-profile design

Large 3-1/2" tank opening

Conveniently located
on/off switch

Large volume output

1-1/4" flexible hose

12" extension

Additional tank closure

Optional void treatment
hose with 3/8" tip reduction

Operational Features:

Provides power to dispense
dust in attics, crawl spaces
and other voids

Holds enough dust to finish
even the biggest jobs

Sturdy; no seams or weak spots

Stable; won't tip in transport
or on the job

Easy to fill and empty

Finger-tip control
of power source

Ideal for large area treatment

Allows user to direct output
accurately

Adds a static charge to dust
particles, making them adhere to
surfaces better

Keeps dust from escaping during
transport and storage

Treats concealed voids through
1/2" drilled holes to dispense
dust into inaccessible harborages



OPERATION AND APPLICATION

Remove tank closure and add about three pounds of dry dust. Dust capacity is affected by the density of the dust. Screw on 2" flexible hose attachment to tank. Make sure power switch is in the off position. Plug power cord into appropriate electrical outlet. Direct hose at area to be treated and turn on/off switch to "on" position.

The Electric Dust-R can be used to treat voids, attics, crawl spaces under structures and other large area. The 18" extension charges the dust during operation making it stick to target surfaces for better results in controlling pests. Drill holes in walls or other structures to gain access to unreachable insect and rodent harborages. Use the optional void treatment hose to apply dusts to these areas.

Always remember that dusts are to be applied as a very thin coating. Too much dust is highly repellent to most insects.

ALWAYS FOLLOW INSTRUCTIONS ON CHEMICAL LABEL FOR MIXING AND PERMISSIBLE LOCATIONS FOR PRODUCT APPLICATION!



135 Region South Drive, Jackson, GA 30233
678-688-5601 • www.bgequip.com

PARTS LIST

ELECTRIC DUST-R MODEL 2250

Item	Part No.	Description	Q/U	Item	Part No.	Description	Q/U
1	2251	1.5 Gallon Tank	1	17	2315	Strain Relief	1
2	29108455	4" Cap w/Holes	1	18	2259	Extensions	1
3	2256	Flange	1	19	2263	Discharge Unit	1
4	2257	Flex Hose 12"	1			(Includes Items 2-7)	
5	2258	Cuff	1	20	2264	Void Treat Discharge	
6	2354	Screw	3			(Optional)	1
7	2261	Clamp	1	21	2265	Void Treat Hose	
8	2252	Housing	1			(Optional)	1
9	2305	Motor Guard	1	22	2262	Cover w/Liner	1
10	2306	Screw #8 - 32 x 5/16	2	23	990	Boot f/Switch	1
11	2253	Duct	1	24	29108123	1/4" Nylon Spacer	4
12	2308	Screw #10 - 24 x 3-1/4	1				
13	2309	Motor 110VAC, Single	1	NOT SHOWN ARE:			
13	2310	Motor 220VAC, Single	1	2316	Wire Connector		
14	2311	Switch 110VAC	1	<u>220 VAC Only:</u>			
14	2340	Switch 220VAC	1	2327	Grounding Screw		
15	2354	Screw #8 x 1/2	1	2366	Grounding Wire		
16	2314	Cord 110VAC	1				
16	2341	Cord 220VAC	1				

