

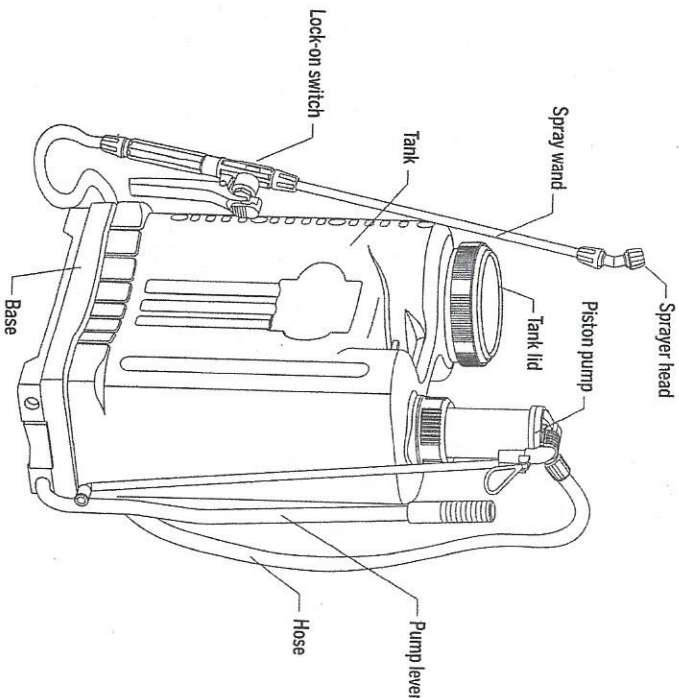
Congratulation on purchasing your new Rainmaker® 4-Gallon Backpack Sprayer. For your safety please ensure you read this manual before operation. Failure to do so can result in serious injury.

INTRODUCTION

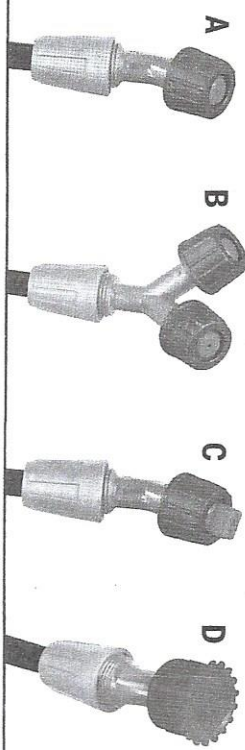
WARNING - Before use please read all instructions thoroughly for proper operation, inspections, maintenance and cleaning instructions. If directions are not fully understood or a problem occurs please contact your local dealer.

- This Sprayer should be operated, maintained and serviced by professionals with sufficient knowledge for safe operation.
- Warranty covers all manufacturing defects. Warranty will be void in cases of abuse, neglect or unauthorized modification to the sprayer.

PART DESCRIPTIONS AND TECHNICAL PARAMETERS



Nozzle Type	Pres.bar	Flow L/min
A - Single Cone Nozzle	3 - 4	0.6 - 0.7
B - Double Cone Nozzle	2 - 4	1.1 - 1.4
C - Single Fan Nozzle	2 - 3	0.6 - 0.8
D - 4-Hole Adjustable Nozzle	2 - 3.5	0.8 - 1.2

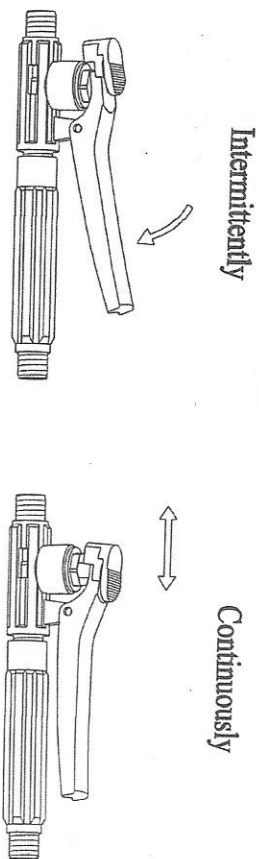


OPERATING INSTRUCTIONS

1. Before operating sprayer use ANSI-approved safety goggles and other safety gear.
2. This Rainmaker® sprayer includes four spray heads. Choose one that best suits your application.
3. To change the sprayer heads, make sure sealing ring is properly in place at the end of the sprayer wand. Attach desired sprayer head and screw plastic nut to the sprayer head to secure.
4. To fill, unscrew cap. Ensure filter is free from dirt and debris prior to filling. Do not overfill tank. Screw cap on securely. Always get assistance when securing the sprayer onto your body.
5. Position the grip handle of the spray wand firmly in you right hand. With your left hand use the pump lever and build up enough pressure in the sprayer system. Once Sprayer has been pressurized, stop pumping.

6. While in use your sprayer will begin to depressurize. Stop spraying and use the pump lever to re-pressurize.
7. Depressurize the sprayer after use.

SWITCH CONTROL



CLEANING AND MAINTENANCE

CAUTIONS - Before attempting to maintain, inspect or clean sprayer always depressurize sprayer by squeezing the lever. Do not perform procedures that are not in this manual.

1. Before use, inspect the overall condition of the sprayer. Look for signs of damaged parts, loose parts, dirt, debris or any other signs that would affect safe operation.

DO NOT USE DAMAGED EQUIPMENT!

2. After use, clean the external surface of the sprayer with a clean, damp cloth.
3. Periodically, lubricate all moving parts.
4. Flush interior and clean the exterior of the sprayer.
5. Ensure the sprayer wand is cleaned and maintained to avoid clogging or build up.

STORAGE

1. Ensure that all liquids are removed from the sprayer.
2. Store sprayer in an indoor area such as a workshop or a storage shed.

HAZARDS AND IMPORTANT SAFETY WARNINGS

FAILURE TO FOLLOW THE INSTRUCTIONS FOR PROPER OPERATION CAN RESULT IN SERIOUS INJURY.

- During operation use ANSI-approved protection wear such as mask, safety goggles, clothes, gloves, etc.
- **KEEP OUT OF THE REACH OF CHILDREN.**
- For proper disposal of pesticide follow the safety instructions provided by the manufacturer.
- Do not spray humans or animals. Never operate against adverse wind. Failure to do so can result in serious injury or death.

WARNING!

1. Do not operate sprayer when you are tired. Keep balance at all times. Do not overreach.
2. Always follow chemical label precautions and EPA (Environmental Protection Agency) regulations when using chemicals. Refer to manufacturer instructions for proper product storage and disposable of waste. Open dumping is prohibited. Check with authorities on proper disposal procedures.
3. After each use, clean the sprayer to protect it from corrosion and possible chemical reaction between the residue chemical and next chemical if they are of different nature.
4. Do not leave sprayer unattended.

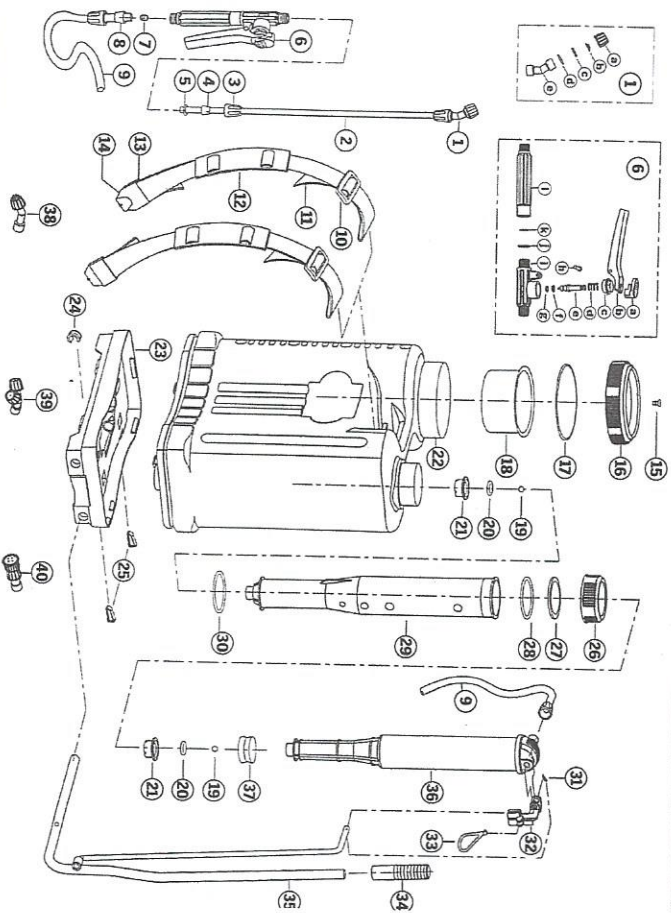
PRECAUTIONS

1. Do not pull or carry sprayer by the spray handle or hose.
2. Test sprayer with clean water to ensure tank, hose and spraying wand are in working condition. When finished using the sprayer empty completely. Clean the unit and store in a clean dry location away from children and pets.

LIQUID VOLUME CONVERSION CHART

OUNCES	CUPS	PINTS	QUARTS	GALLONS	LITERS(APX)
4 OZ	1/2 C	1/4 PT	1/8 QT	1/32 GAL	1/8 L
8 OZ	1 C	1/2 PT	1/4 QT	1/16 GAL	1/4 L
16 OZ	2 C	1 PT	1/2 QT	1/8 GAL	1/2 L
32 OZ	4 C	2 PT	1 QT	1/4 GAL	1 L
64 OZ	8 C	4 PT	2 QT	1/2 GAL	2 L
128 OZ	16 C	8 PT	4 QT	1 GAL	4 L
256 OZ	32 C	16 PT	8 QT	2 GAL	8 L
384 OZ	48 C	24 PT	12 QT	3 GAL	11 L
512 OZ	64 C	32 PT	16 QT	4 GAL	16 L
640 OZ	80 C	40 PT	20 QT	5 GAL	20 L

ASSEMBLY DIAGRAM AND PART LIST



#	Part Description	QTY	#	Part Description	QTY	#	Part Description	QTY
1	Conical spraying head	1	1	Switch body	1	22	Chemical tank	1
2	Spray cap	1	1	O-ring - 18.5x2.65	1	23	Base	1
3	Conical spraying sheet	1	1	Switch filter screen	1	24	Aligning buckle	1
4	Split sheet	1	1	Handle	1	25	Lock pin	2
5	Seal washer sheet -16x-11x2	1	7	Flared sheath	2	26	Lid of piston pump	1
6	Bend	1	8	Plastic tube sleeve	2	27	Felt ring	1
7	Sprayer rod	1	9	Plastic tube	1	28	Pump cylinder gasket	1
8	Rod Nut	3	10	Agitator	2	29	Pump cylinder	1
9	Lock sleeve	2	11	Strap buckle	2	30	Pump cylinder O-ring seal	1
10	O-ring seal - 15x3	2	12	Strap	2	31	Split pin - 2x25	1
11	Switch assembly	1	13	Shoulder pad	2	32	Fix clamp for pump lever	1
12	Limit cap	1	14	Strap hook	3	33	Fix ring for pump lever	1
13	Switch press plate	1	15	Lid of chemical tank	1	34	Pump lever sheath	1
14	Switch nut	1	16	Air inlet cork	1	35	Pump lever assembly	1
15	Switch spring	1	17	Big seal ring	1	36	Piston pump assembly	1
16	Valve plug	1	18	Big filter screen	1	37	Leather cup	1
17	valve plug O-ring -9.5x1.9	1	19	Seal ball	2	38	Fan-style head	1
18	Seal ring	1	20	O-ring - 20.5x2.5	2	39	300 dual head	1
19	Switch pin	1	21	Lock cap	2	40	4-hole adjustable nozzle	1