

ULV Cold Fogger

INSTRUCTION MANUAL

Please read this manual
carefully before use.



Please follow the safety operation instructions carefully, and use the machine properly, to improve product efficiency and service-life. You can contact your local distributors, or contact us directly for assistance.

Attention

- 1 Before use, verify that the electric supply is 220V/50Hz, (110V/60Hz for some areas), and make sure the air filter cotton is in the base of the air filter, and that it is not blocked.
- 2 DO NOT overfill the collusion tank above its maximum volume of 5L to prevent overflow. If the air filter cotton is wet, pelase wait until it is completely dry before turning on the machine.
- 3 For accurate spraying effect, please do not detach or change the motor rotation, since the motor speed is fixed. In cases where the spraying distance is close, slightly adjust the control valve. Only use the water-soluble liquid, and make sure there are no blockages to the air filter.
- 4 Please power the machine completely off if one or more the following occur: the machine gets wet, the motor stops working/is making an unusual sound when in use, you notice solution leaking from the machine, or any other issues.
- 5 You must wear a disposable protective suit and mask while operating the machine.
- 6 After use, thoroughly clean any residual solution with clean water, and drain the spray nozzle completely to avoid eroding or blockages. Power off immediately after use, and clear the solution tank by following the manufacturer's instructions. Store in a dry location, where it will not be exposed to the sun and is out of reach of children. Do not store machine near any flammable or explosive items, or in high-temperature areas.
- 7 Do not operate machine in the rain and make sure hands are completely dry before plugging/unplugging the machine. To avoid damaging the motor, do not turn the machine on/off frequently.
- 8 If the machine breakdowns, turn it off immediately and call a professional technician for assistance. DO NOT DISASSEMBLE the machine yourself; please allow a professional technician to conduct all necessary repairs. Becareful not to damage the power line with ALCI (Appliance Leakage-Current Interrupters).

Model Number & Technical Parameters

Model Number	ASCF01
Power Supply	AC220-240V/50Hz (110V/60Hz)
Power	1000W
Tank Capacity	5L
Sprayer Volume	650 ml/min (adjustable)
Droplet Size	10-150 u m
Effective Range	3-8m
Net Weight	2.6kg
Gross Weight	3.7kg
Measurement	560x240x330mm

Basics

ULV Cold Fogger operates by its high-power, universal motor. The rotation of the fan blades generate a high-speed air flow; at the same time, the motor increases the pressure of the solution, sending it to the confluences of the well-designed valves, resulting in small fog droplets.

Features

The Cold Fogger is low-labor intensive, high efficiency, and sprays 1,000 square meters in only ten(10) minutes.

Application

- 1 Food processing buildings
- 2 Chicken houses
- 3 Plants
- 4 Factories
- 5 Transportation businesses
- 6 Residential buildings

Operating Instructions

- 1 Toggle the switch located on the front of the machine to turn on, and to adjust the spraying distance.
- 2 Fill the tank with solution, then fasten the tank cap securely.
- 3 DO NOT submerge the check valve into the tank/solution.
- 4 DO NOT overfill past the maximum volume of 5L, to avoid damaging the motor.
- 5 Plug in the machine
- 6 Press the trial button and test if it can automatically power off before using.
- 7 If it can power off, press the reset button, and then the machine will be ready for use.
- 8 If it cannot power off, change the cable.
- 9 DO NOT disassemble the cable yourself.
- 10 Press the switch and turn on the machine.
- 11 The particle size can be adjusted by rotating the knob located on the spray-head.
- 12 After use, clean up any residual solution and wash the tank out with clean water. Refill the tank with water and turn on machine. Spray, (with a large flow rate), for 30 seconds to avoid blockage or corrosion in the nozzle. Power off the machine and store in a safe place.

Troubleshooting

1. Not operating

Causes:

- Machine is not plugged in completely
- Switch Malfunction
- Carbon brush wear

Solutions:

- Recheck power cord to make sure it is securely plugged in
- Recheck switch plug
- Change the carbon brush by following the instructions below:
 - 1 Remove the universal motor from the sprayer and make sure all parts are undamaged.
 - 2 Press down on the valve located on the outer frame of the carbon brush, using a screwdriver.
 - 3 Use needle-nose pliers to carefully pull the carbon brush from the stand.
 - 4 Prepare the new carbon brush by stripping off the universal motor power line. Compress the new carbon brush and power line tightly.
 - 5 Place carbon brush back on the stand of the motor and depress.
 - 6 Put the universal motor back in the sprayer.

Troubleshooting (continued)

2. Machine runs without spraying

Cause:

- Flow rate valve or spray nozzle blockage

Solution:

- Use iron wire or high-pressure cylinder to inject air into the nozzle

Cause:

- Solution pipe falls off

Solution:

- Re-install solution pipe

Cause:

- The adjustable sprayer head is locked

Solution:

- Re-install adjustable sprayer head

3. Spraying is interrupted

Cause:

- Solution pipe falls off or is broken

Solution:

- Re-install solution pipe or replace broken solution pipe

4. Machine makes unusual noise

Cause:

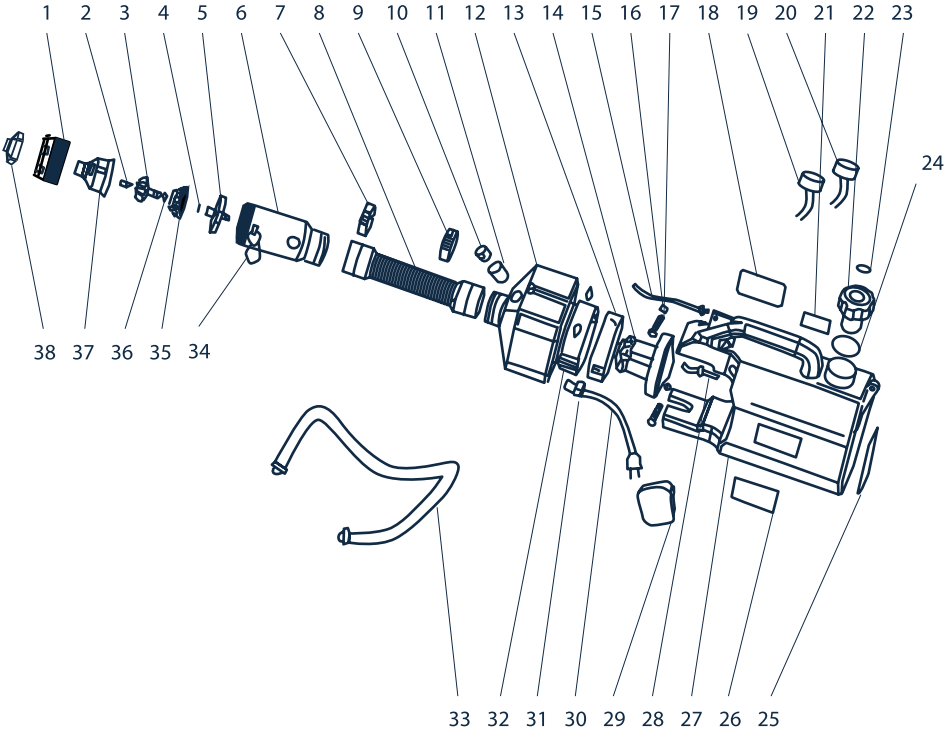
- Air inlet is clogged

Solution:

- Remove any obstructions in the air inlet

Parts List

- | | | | | | |
|----|--------------------------|----|----------------|----|-------------------|
| 1 | Spray-head cap 2 | 16 | M4 cap nut | 32 | Rubber ring 7 |
| 2 | 3 nozzle core | 17 | M4x18 screw | 33 | Belt |
| 3 | Nozzle | 18 | Label | 34 | Hooker |
| 4 | Washer | 19 | Filter | 35 | Spray-head holder |
| 5 | Spray-head support frame | 20 | Check valve | 36 | 6x1.8 O-ring |
| 6 | Spray-head shell | 21 | Warning | 37 | Spray-head cap |
| 7 | Clamp 40-63 | 22 | Cap | 38 | Damper |
| 8 | Bellows | 23 | O-ring 7.1x1.8 | | |
| 9 | Clamp 40-63 | 24 | O-ring 47x3.5 | | |
| 10 | Switch | 25 | Warning | | |
| 11 | Sheath | 26 | Logo | | |
| 12 | Motor shield | 27 | Tank | | |
| 13 | Seal ring | 28 | Inlet pipe | | |
| 14 | motor | 29 | Sponge | | |
| 15 | Outlet | 30 | Cable | | |
| | | 31 | PG-7 connector | | |



Warranty

There is a one(1) year warranty guarentee for service on all main parts of the machine, and a three(3) month warranty on the O-ring, (23 & 24), and sponge, (29).

The following conditions are not covered under the manufacturer’s warranty:

- 1 Damage to metal parts, host, and rubber pads due to corrosion
- 2 Any damage(s) caused by attempting to fix the machine yourself, instead of hiring a professional technician.
- 3 Not following instructions in the user manual during operation.
- 4 Any damage(s) caused by improper operation, or overload usage.
- 5 Changing the carbon brush after the 300-hour accumulative time.

Notes



BioCide Labs, LLC

3482 Keith Bridge Road Suite 123

Cumming, GA 30041

(679) 971-4388

www.BioCideLabs.com