

Birchmeier garden range



Foxy



Isli



Super Star



Aquamix 1.25



Florajet



Garden 5



Garden Star 3



Garden Star 5



Hobby Star



Profi Star 5



Iris



Senior



Power LG



Accu 285-15



Microniseur B 245



M 225-20



M 255-25



A70

Operating manual



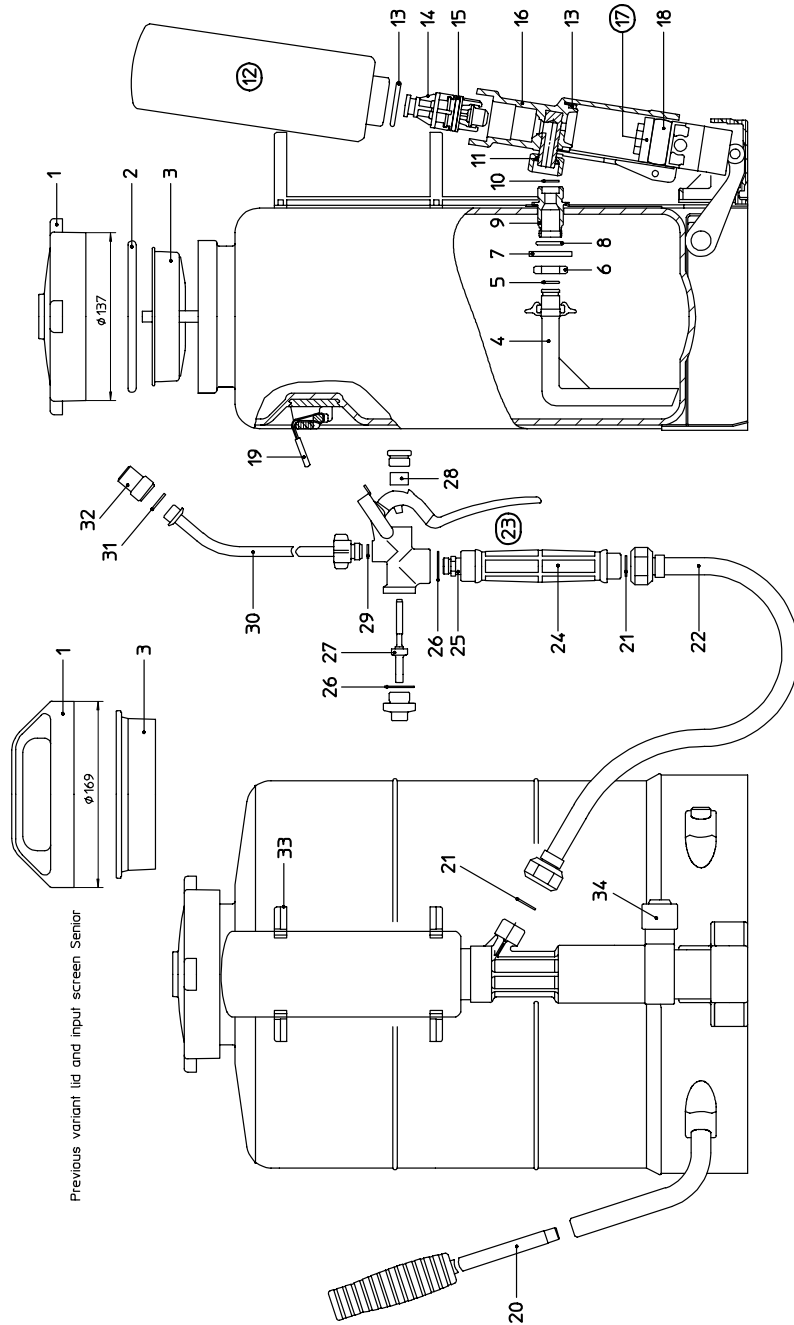
Flox, Iris, Senior

Please read these instructions carefully and keep them in a safe place

Birchmeier Sprühtechnik AG 06.08 (110 740 53)

Flox / Iris / Senior

Spare parts list



Pos.	Description	Parts number
1	Lid Flox / Iris / Senior	103 972 02-SB
1	Lid compl. (old model Senior)	104 891 01-SB
2 a	Gasket 108x7	
3	Input screen Flox / Iris / Senior	770 096 99-SB
3	Input screen (old model Senior)	104 892 01-SB
4	Suction bend avec O-Ring (5)	109 623 01-SB
5 a	O-Ring 11,11x1,78 NBR	
6	Hexagon nut G1/2"	412 067 01
7	Washer	442 260 01
8 a	O-Ring 19,5x3 NBR	
9	Nipple	109 507 01
10 a	Flat gasket 14x9,7x1,5 PE	
11	Treaded ring	109 323 01
12	Pump assy.	109 625 01-SB
13 a	O-Ring 31,34x3,53 NBR	
14	Valve assy.	113 885 01-SB
15 a	O-Ring 23,47x2,62 NBR	
16	Valve casing cassy.	108 037 01-SB
17	Piston assy.	110 512 03-SB
18	Rubber piston-ring	262 003 01-SB
19	Carrying belt few	114 449 05-SB
19	Carrying belt extra long, pair	114 449 10
20	Pump lever compl.	116 313 02
21 b	Flat gasket 17x11x1,5 NBR	
22	Hose assy.	103 960 08-SB
23	Pistol valve 1/2"	105 040 10-SB
24	Handle plastic	103 922 01-SB
25 b	Strainer	
26 b	Flat gasket 24x16,2x2	
27 b	Valve assy. NBR	
28 b	Gland packing	
29	Flat gasket 11,9x7x1,5 NBR (12 pcs.)	116 424 02-SB
29 b	Flat gasket 11,9x7x1,5 NBR	
30	Spray tube, 50cm curved	113 707 04
31 b	Flat gasket 17x12,7x2 PE	
32	Duro mist nozzle 1,5 mm	285 023 24-SB
33	Support for spray tube and pump lever	114 196 01-SB
34	Grease piston	108 652 01
a	Sealing kit pump and container	108 559 01-SB
b	Sealing kit spraying line	106 002 01-SB

Spare parts must be ordered separately. Ask your dealer.

Please read these instructions carefully and keep them in a safe place

Applications

The equipment can be used to spray the recognized pesticides, weed-killers and liquid fertilizers, as used in the home, in the garden, on the farm, or in vineyards.

Technical data

Permissible operating pressure	6 bar max.
Permissible operating temperature	30 deg.C (86 deg.F)
Tank volume	10 / 15 / 20 litres
Weight	4.8 / 5.2 / 5.5 kg
Spraying-rate	up to 2.2 litres/min

Safety instructions



Make sure that the liquid you wish to spray is suitable for this equipment. The safety and handling instructions provided by the chemical manufacturer must be noted and observed. The use of chemicals is entirely at the user's own risk. Should you have any doubts in this respect please contact the customer service. The sprayer must not be filled with caustic substances (e.g. disinfectants and impregnating liquids which attack the skin or materials), corrosive substances (acids) or highly inflammable or combustible substances.

The sprayer must not be filled with liquids at a temperature greater than 30 deg.C.

The effects of frost can damage the equipment.

When spraying avoid contact with the liquid being sprayed. Wear protective clothing, mask, and goggles and protect your hands. Do not spray against the wind, nor when the wind is strong. Do not discharge any more liquid than is needed for the area to be treated.

Do not attempt to clear a blocked nozzle or valve by blowing through using the mouth (danger of poisoning).

The appliance must be cleaned after use. When cleaning take care that water-courses are not contaminated.

Do not drain off chemicals into other containers (bottles, cans, etc). Store equipment and chemicals in a safe place, away from children and domestic animals.

Preparing the equipment for use

Screw the pump lever into the pump shaft.

If the pump lever is blocked, press firmly downwards so that the rubber piston-ring which may be blocked can be released into the cylinder.

Fit the hose. Check for correct operation and that there are no leaks.

When the appliance has been out of use for a long period, tighten up the lubricating piston (S) in the lowest piston position (lever points upwards) a little.

Operation

- Filling the tank:

Do not fill up to the level of the filling strainer, but keep to the maximum permissible contents: Flox 10 litres; Iris 15 litres; Senior 20 litres.

- Spraying:

Operate the pistol valve (23) and generate pressure by means of a few strokes on the pump lever. Maintain the pressure by operating the pump lever periodically.

The nozzle fitted in the standard version is suitable for fungicides and insecticides. Other nozzles are available for different applications.

- Removing and fitting the pump:

Loosen the nut between pump and tank.

Tilt the pump casing towards the rear and pull it up and out.

When the piston (17) is exposed, the rubber piston-ring (18) can be re-tightened or replaced at the butterfly-nut. Do not over-tighten the rubber ring. If the piston is properly greased, it should be possible to introduce it into the valve housing (16) without using force.

When fitting the pump, check the gasket (10) in the suction pipe and if necessary replace it. The valve (14) is accessible by unscrewing the air-reservoir.

Care and maintenance

After use the appliance must be emptied; never store the spray-liquid in the sprayer.

Unscrew the pump and empty the tank.

The appliance must be washed out using a suitable agent and then rinsed with clean water; do not use hot water (max. 30 deg.C).

Move the pump-piston (17) to the lower position (handle points upward) and apply the lubricating piston (S) gently. Then give the pump a few strokes, so that the piston is prevented from sticking.

Particular attention must be paid to parts which are subject to wear, such as the nozzle, filter and gaskets. The filter (25) and nozzle (32) should be cleaned periodically. These parts are easily replaceable.

Do not clean the nozzle with hard objects, nor blow through it using the mouth. The most suitable cleaning device is a nail-brush or tooth-brush. To dry the appliance, leave it standing.

Rectifying faults

a) The pump does not create suction:

- If the nut between pump and tank is not tight - tighten it
- Gasket (10) defective - replace
- Valve (14) sticking - free it by turning at the valve seat

b) The liquid drips out at the pump casing:

- Retighten the piston (17), see Section "Removing and fitting the pump"

c) The pump jams:

- Grease the piston (17), by turning the lubricating piston (S)
- If that does not cure the problem, dismantle the pump, and clean and grease the piston

d) No discharge from the nozzle:

- Filter (25) blocked - clean the filter

Spare parts and repairs

If any part shows signs of damage or wear, replace it immediately. Use only BIRCHMEIER original parts (see spare parts list).

Guarantee

We guarantee the equipment for 24 months from the date of purchase. During this guarantee period we will rectify free of charge any defects in the equipment caused by faulty material or manufacture, by either repairing or replacing parts, or the whole sprayer. Damage attributable to improper use, faulty maintenance, the effects of chemicals or normal wear and tear (e.g. gaskets) is excluded from the guarantee.

The guarantee lapses if the owner or a third-party carries out modifications to the sprayer, or improper repairs. The guarantee excludes all claims which extend beyond the obligations referred to above. All third-party liability is excluded, other than any imposed by law.

Place of jurisdiction: Baden, Switzerland

Applicable law: Swiss law

For any further information concerning use or maintenance of the equipment please refer to your dealer.