

C22HD & C22HDS BROADCAST SPREADER

ASSEMBLY and OPERATING INSTRUCTIONS

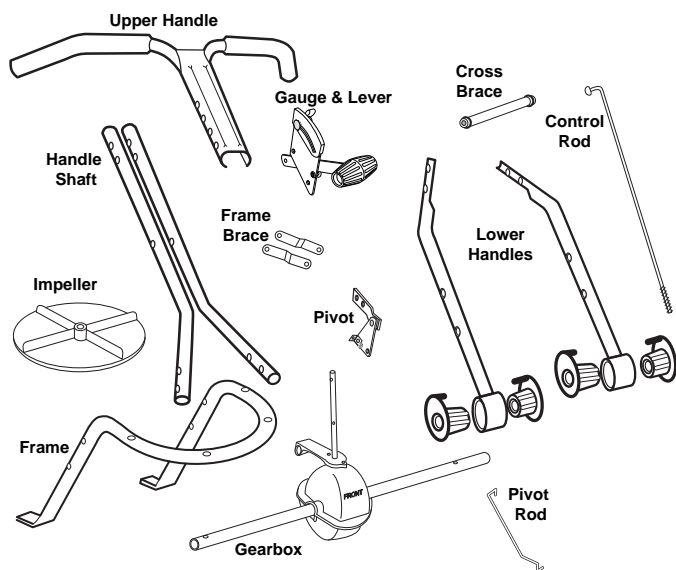
EarthWay
EV-N-SPRED

PLEASE CALL IF YOU ARE MISSING ANY PARTS, HAVE ANY DIFFICULTY IN ASSEMBLY, OR HAVE ANY QUESTIONS REGARDING THE SAFE OPERATION OF THIS SPREADER. THIS MODEL INCLUDES LIFETIME TECHNICAL SUPPORT SUPPORT HOT LINE: 574-848-7491 or 800-294-0671, email: techsupport@earthway.com

HELPFUL HINTS:

- ☑ If your spreader does not spread evenly, be sure the FRONT on the gear box points to the front of the spreader. The impeller must turn clockwise. Reversing the gearbox will cause the impeller to turn counter clockwise. Clean the impeller after each use as some fertilizer may become stuck on the impeller blades and will cause uneven spreading.
- ☑ Your spreader is designed to be pushed at three miles per hour, which is a brisk walking speed. Slower or faster speeds will change the spread patterns. Wet fertilizer will also change the spread pattern and flow rate. Clean and dry your spreader thoroughly after each use. To prevent rust, please coat all metal surfaces, also inside tubes where possible, with a light oil or WD-40. Wash between the shut off plate and bottom of the hopper.
- ☑ Gears are permanently lubricated at the factory. Do not open the gearbox or dirt may enter.
- ☑ If you use **Rock Salt** remove the agitator to prevent damage to the gearbox and remove salt from the hopper daily. **Rock Salt** will reconstitute back into a solid block over night and will damage your spreader.

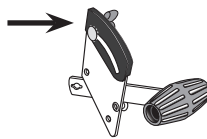
IF YOUR SPREADER COMES SEMI ASSEMBLED, SKIP TO STEP #6



WARNING

Do not use air tools to assemble. To prevent seizing, spray all nuts & bolts with oil, grease, wax, or other lubricant.

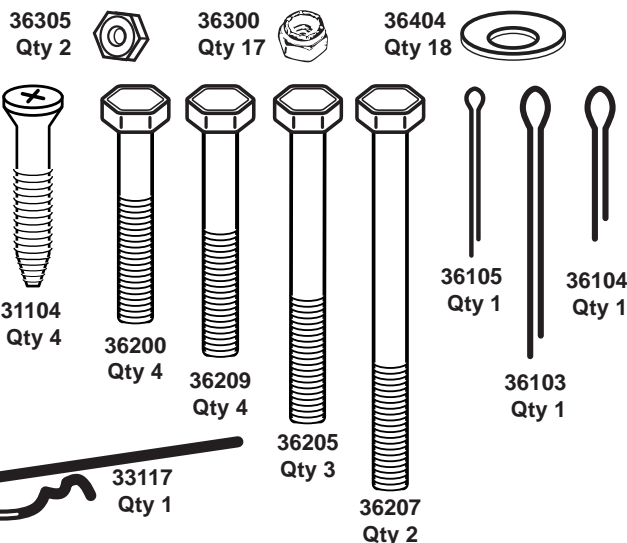
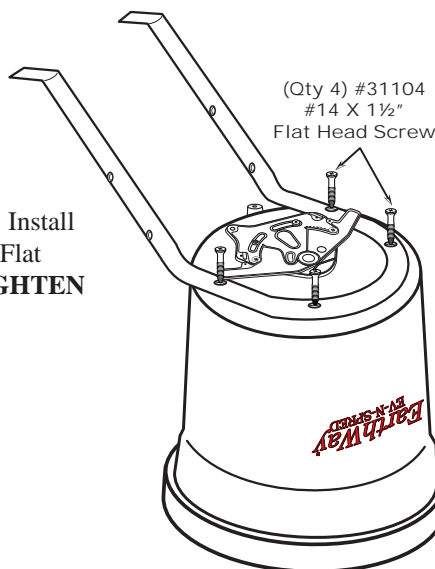
Gauge Overlay is snapped over the metal gauge. Replace the stop bolt assembly to secure overlay on the gauge.

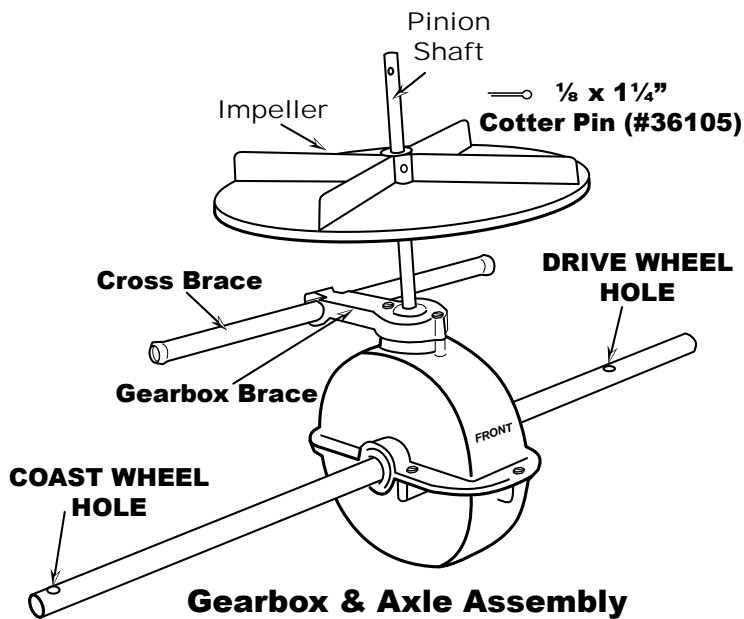


ROCK SALT and POWDERED MATERIALS should not be used in this spreader as it will damage gearbox and can void warranty.
Use only granular materials.

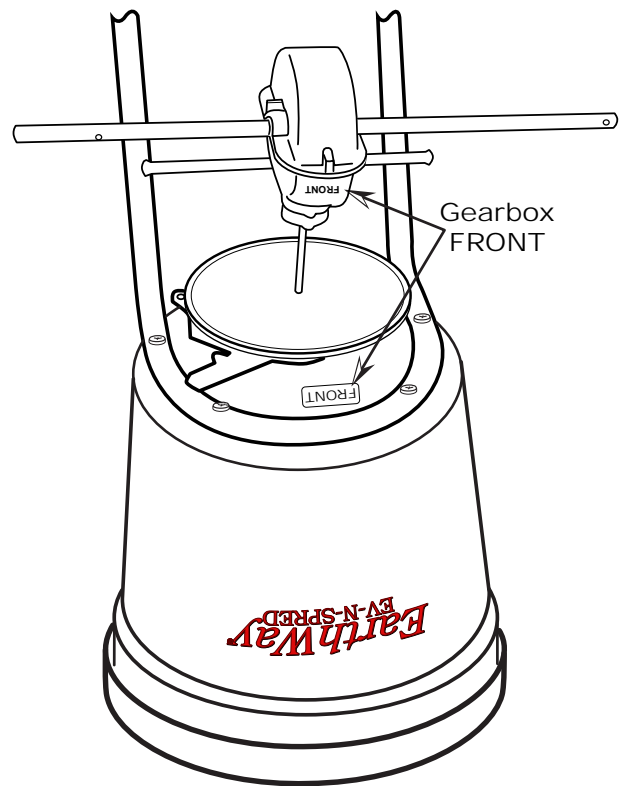
1. Remove and identify all of the loose parts from carton.

2. Position hopper on side. Install frame using (4) #14 x 1½" Flat Head Phillips screws. **TIGHTEN THESE NOW.**

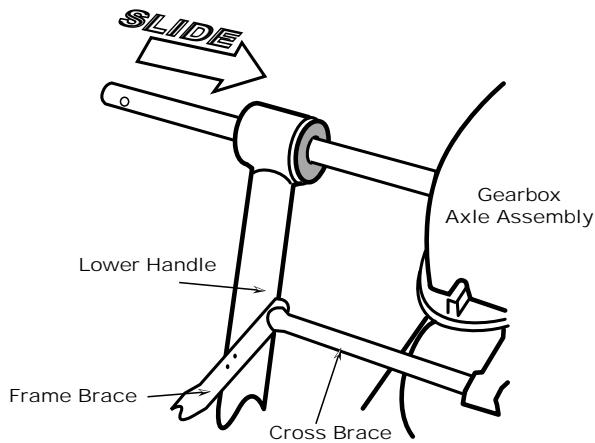




3. Install impeller onto pinion shaft. Insert 1/8" x 1 1/4" cotter pin through impeller then through pinion shaft. Use hole nearest gear box. Spread cotter pin to prevent from falling out. Next, install the Cross Brace through the Gearbox Brace Support as shown above.



4. Install Gearbox by inserting the pinion shaft into hole in center of hoppers bottom. The word "FRONT" on the gearbox must point to FRONT of the hopper.



5. Install Lower Handles onto Axle to both sides as shown above.

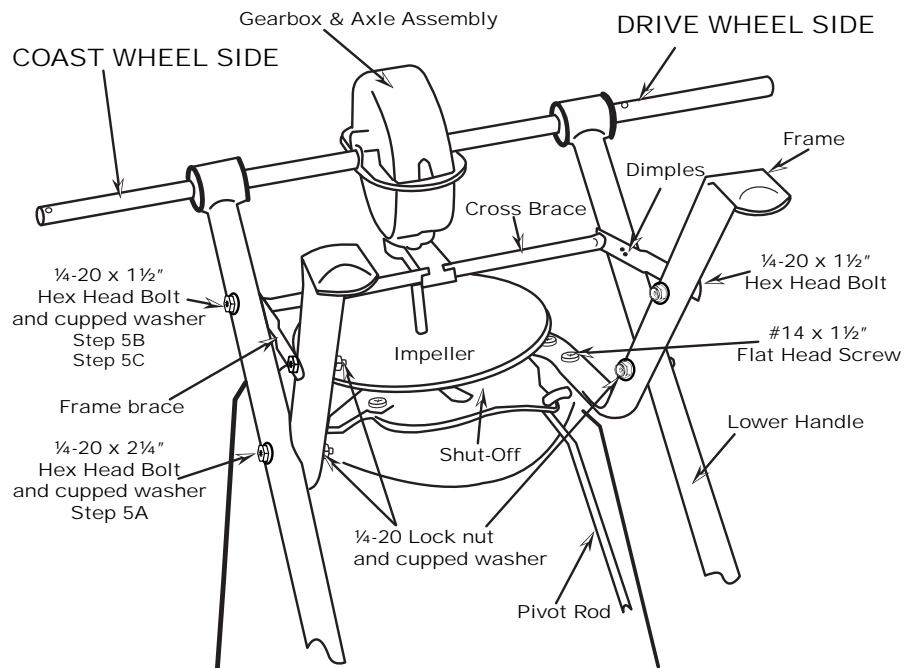
A. Now insert 2 1/4" bolt through second hole in lower handle and through first hole in frame and secure with locknut.

DO NOT TIGHTEN YET.

B. Now insert 1 1/2" bolt through first hole in lower handle, then through frame brace, and finally into the threaded connector in the Cross Brace. [NOTE: Dimples on frame braces must be facing toward gearbox as shown.]

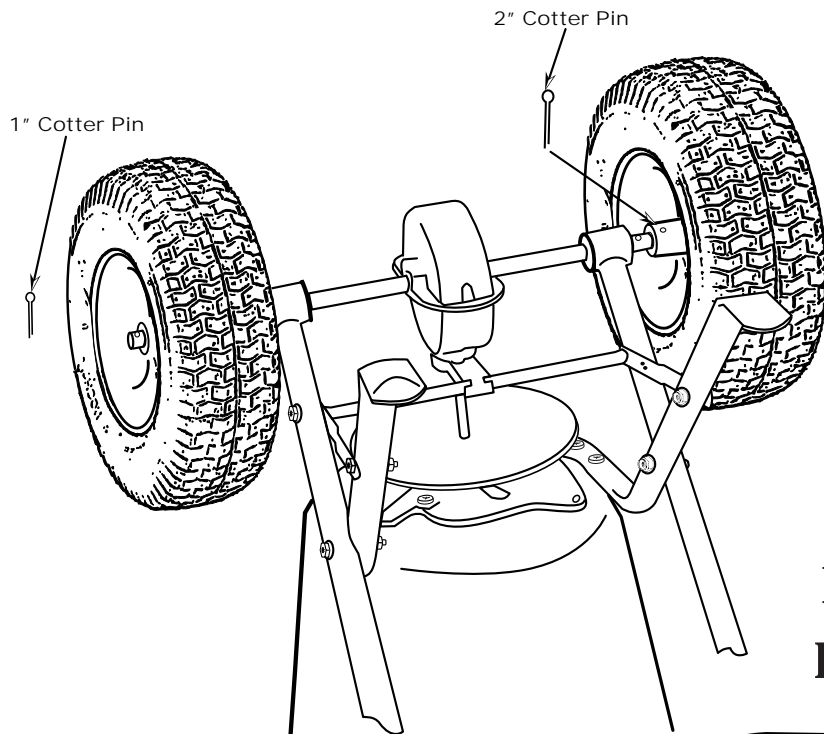
C. Next insert 1 1/2" bolt through other end of frame brace and through second hole in frame install locknut.

DO NOT TIGHTEN YET.



~~NOTICE CUPPED WASHER LOCATIONS~~

NOW GO BACK AND TIGHTEN ALL NUTS AND BOLTS STARTING WITH FIRST STEP. DO NOT OVER TIGHTEN.



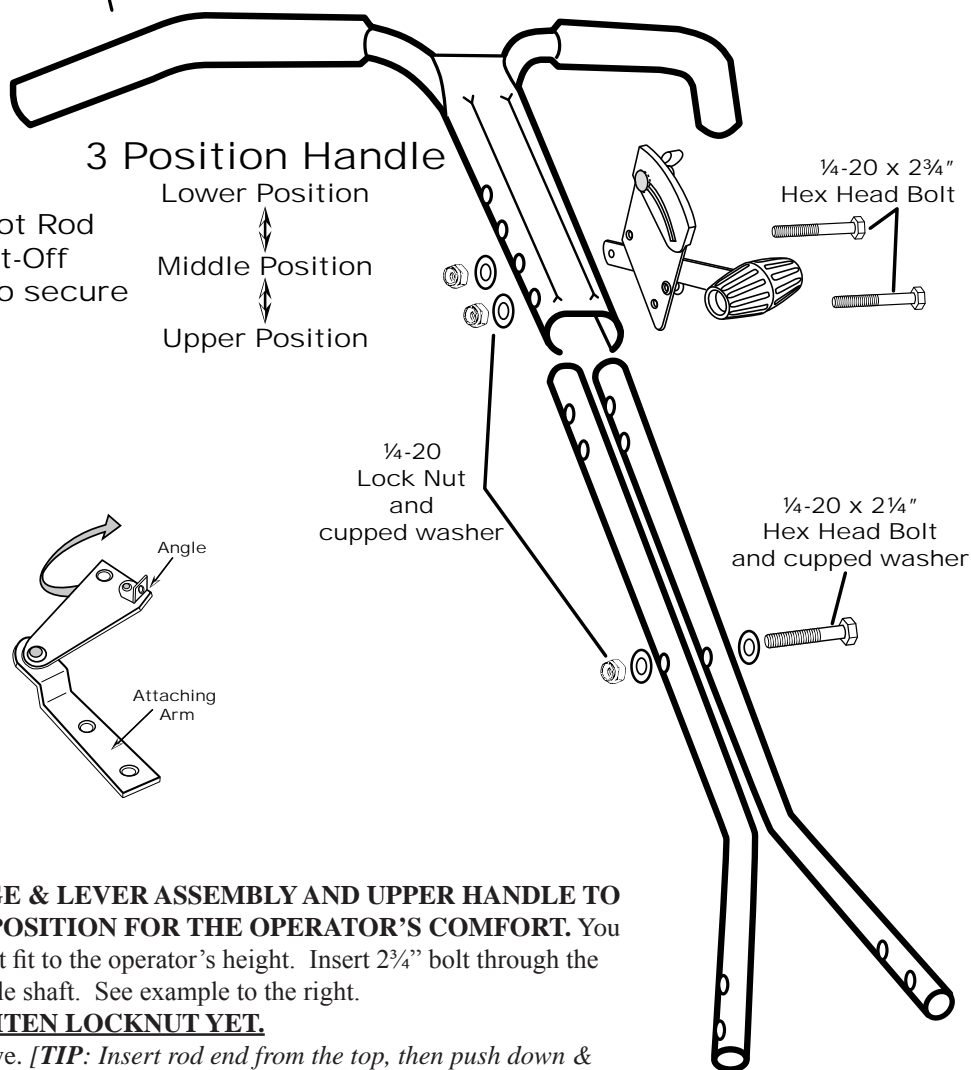
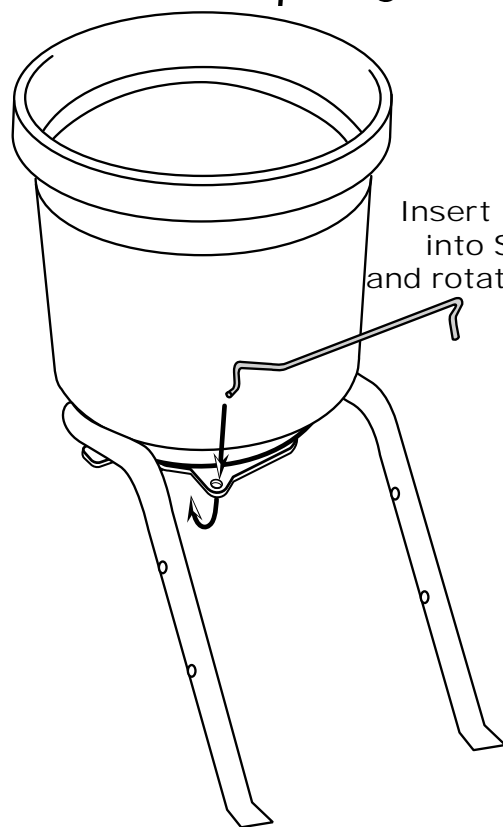
6. Install drive wheel to axle using pin hole nearest to lower handles as shown. Insert 2" cotter pin through wheel and through axle. Bend with pliers to prevent pin from falling out.

NEXT

Install coast wheel to axle, and then using outside pin hole on the axle (as shown on the left), insert 1" cotter pin through axle [NOTE: not thru the wheel]. Bend with pliers to prevent pin from falling out.

TURN SPREADER UPRIGHT ON TO WHEELS

**If you have any questions
please call 1-574-848-7491**



7. NOTE: BEFORE INSTALLING THE GAUGE & LEVER ASSEMBLY AND UPPER HANDLE TO THE HANDLE SHAFT, SELECT THE BEST POSITION FOR THE OPERATOR'S COMFORT. You can select lower, middle, or upper positions for best fit to the operator's height. Insert 2 3/4" bolt through the Gauge, then upper handle and finally through handle shaft. See example to the right.

DO NOT TIGHTEN LOCKNUT YET.

8. Insert pivot rod into shut off plate as shown above. [TIP: Insert rod end from the top, then push down & turn to lock in place.]

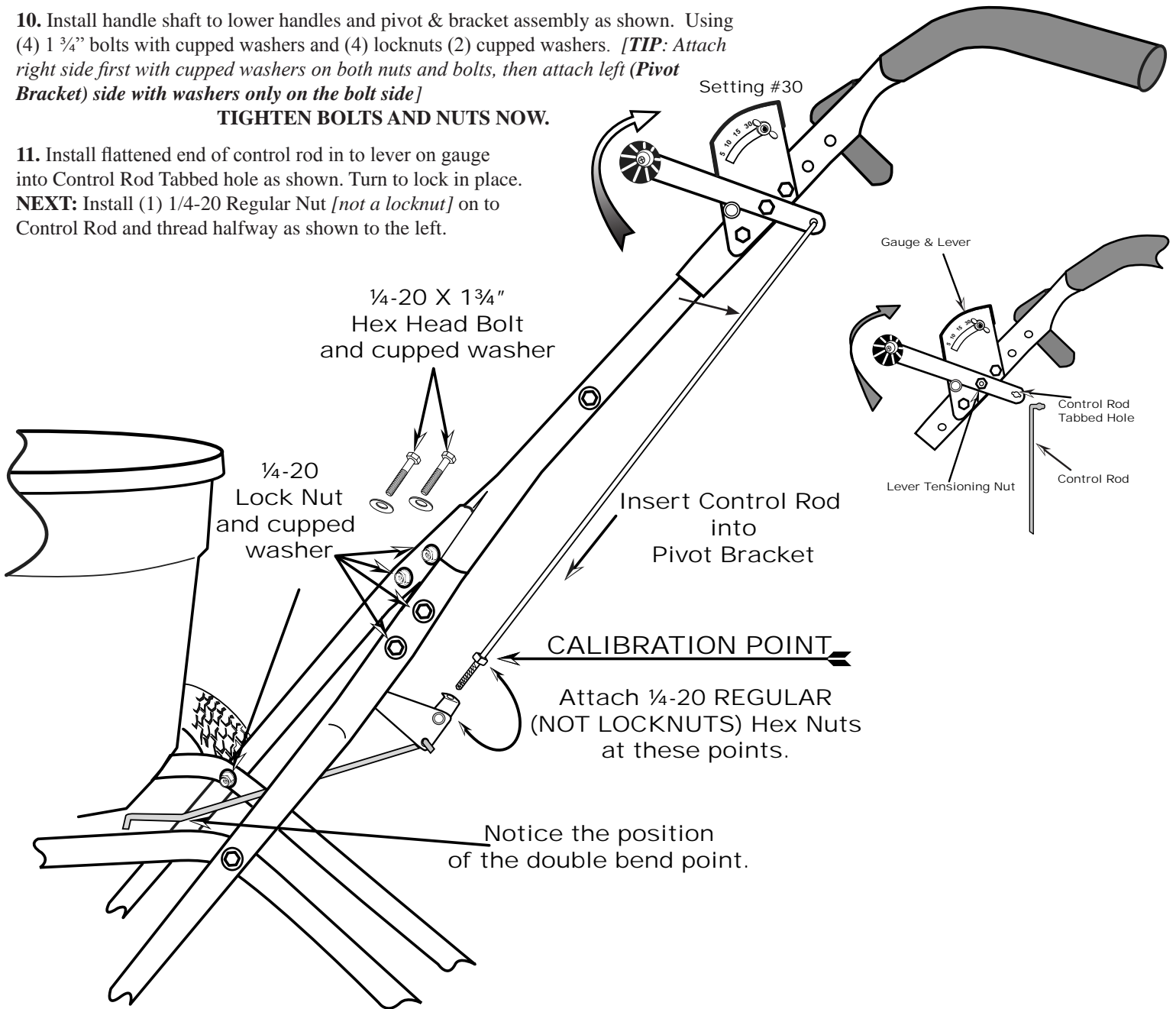
9. Insert other end of pivot rod into pivot and bracket assembly as shown. [TIP: Insert rod end from the side that has the angle attached to the bracket, then turn to lock in place as shown at the right and above. The correct positioning of the Pivot Bracket has the Angle and Attaching Arm facing away from the gearbox.]

10. Install handle shaft to lower handles and pivot & bracket assembly as shown. Using (4) 1 3/4" bolts with cupped washers and (4) locknuts (2) cupped washers. *[TIP: Attach right side first with cupped washers on both nuts and bolts, then attach left (Pivot Bracket) side with washers only on the bolt side]*

TIGHTEN BOLTS AND NUTS NOW.

11. Install flattened end of control rod in to lever on gauge into Control Rod Tabbed hole as shown. Turn to lock in place.

NEXT: Install (1) 1/4-20 Regular Nut [not a locknut] on to Control Rod and thread halfway as shown to the left.



12. Next push lever forward to setting "0". Align control rod with hole in pivot bracket, pull lever backward to insert control rod through hole in pivot bracket. *[TIP: If the lever does not move easily, loosen slightly to make this step easier]* Now install 1/4-20 regular nut on to Control rod.

DO NOT TIGHTEN NUTS YET.

13. Pull lever back to setting "30" as shown. Next push pivot & bracket forward so that the shut off plate in the hopper is in the full open position. *[NOTE: THE SETTING OF "30" ON THE GAUGE & LEVER ASSEMBLY MUST OPEN THE SHUT-OFF COMPLETELY FOR PROPER CALIBRATION.]*

Now tighten the nuts against the pivot bracket to prevent change in calibration. Test by opening and closing the Gauge & Lever a few times to ensure an accurate calibration.

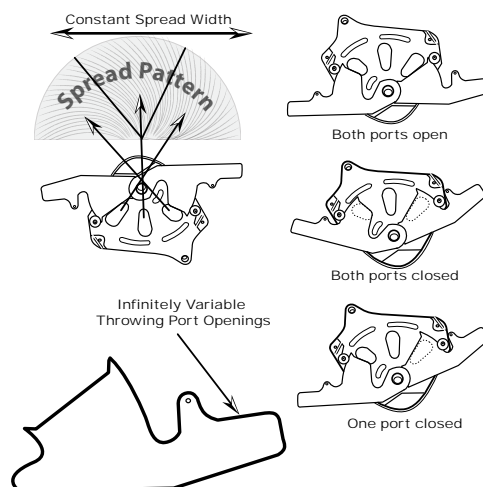
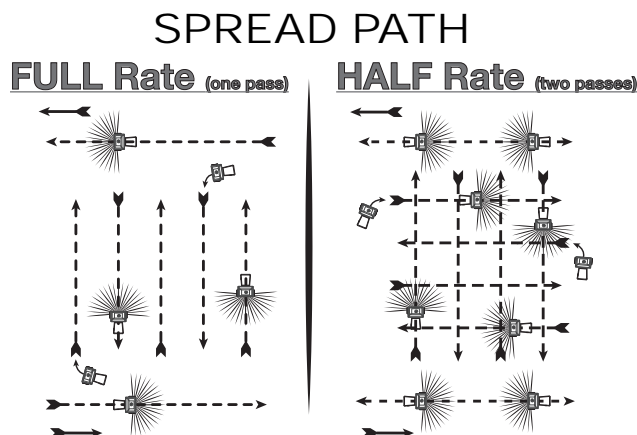
14. Tension on the flow control lever may be adjusted by tightening or loosening the tension nut as shown on the right.



15. Insert Agitator to pinion shaft on inside of hopper. **NOTE:** Position of flat side of agitator. This pin should be installed as shown below.

16. For normal operation both doors should be fully opened. To reduce flow to the left side, partially or completely close the door over the rear (**LARGE**) hole. To reduce flow to the right side, partially or completely close the door over the front (**SMALL**) hole. Close both doors for a narrow center spread pattern.

WARNING: If the optional side deflector is being used in the down position, the plate over the rear (**LARGE**) hole **MUST BE CLOSED** or an over application of material will occur.



The settings furnished on the Setting Matrix are intended as a guide only. Variations in physical characteristics of material applied, walking speed, and roughness of ground surface may require slightly different spreader settings. Due to these conditions, Earthway Products, Inc. makes no warranty as to the uniformity of coverage actually obtained from the settings listed.

5-YEAR LIMITED WARRANTY

Earthway Products, Inc. warrants this product free of defects in original workmanship and materials for a period of 5-Years to the end user with the original purchase receipt. If a manufacturing non-conformance is found, Earthway Products, Inc. at its discretion will repair or replace the part(s) or product at no charge provided the failure is not the result of incorrect installation, mishandling, misuse, tampering, or normal wear and tear as determined by Earthway. Earthway at its discretion may require that the part(s) or product be returned along with the original purchase receipt at owners' expense for examination and compliance with the terms of this warranty. Do not return any product without first receiving authorization from Earthway Products, Inc. To seek remedy under this warranty, contact Earthway Products, Inc. at 574-848-7491, techsupport@earthway.com or write to Earthway Products, Inc. P.O. Box 547 Bristol, Indiana 46507 and describe the nature of the manufacturing defect. **SPECIFIC LIMITATIONS:** This warranty covers only the part(s) or product; any labor charges associated with repair or replacement of non-conformances are specifically excluded. Due to the corrosive nature of most fertilizers and ice melt products, Earthway Products, Inc. makes no warranty against and specifically excludes part(s) or product degradation or failure due to corrosion or its effects. Clean and dry your spreader thoroughly after each use, as a preventative measure, coat all metal parts with a light oil or silicon spray.

OPERATING INSTRUCTIONS

Before filling hopper, become familiar with the operation of this spreader.

- ☒ Obtain proper setting for material to be used from the enclosed SETTING MATRIX included with this spreader, or from our web site under the MANUALS SECTION.
- ☒ Move stop bolt on rate gauge assembly to the proper setting.
- ☒ While pushing spreader forward, pull control lever back to stop bolt.
- ☒ To stop, push lever forward to close flow holes before you stop moving.
- ☒ When finished, empty any remaining material from hopper.
- ☒ Thoroughly wash spreader and allow to dry before storing. A coating of light oil will help prevent corrosion.
- ☒ If you use Rock Salt, **REMOVE THE AGITATOR** to prevent damage to the gearbox.

You now can register your product via email:

sales@earthway.com

Please keep the original purchase receipt because it will be needed if you need warranty coverage.

HOW TO ORDER SPARE PARTS

All spare parts listed may be ordered direct from Earthway Products, Inc.

Be sure to give the following information when ordering.

Model Number

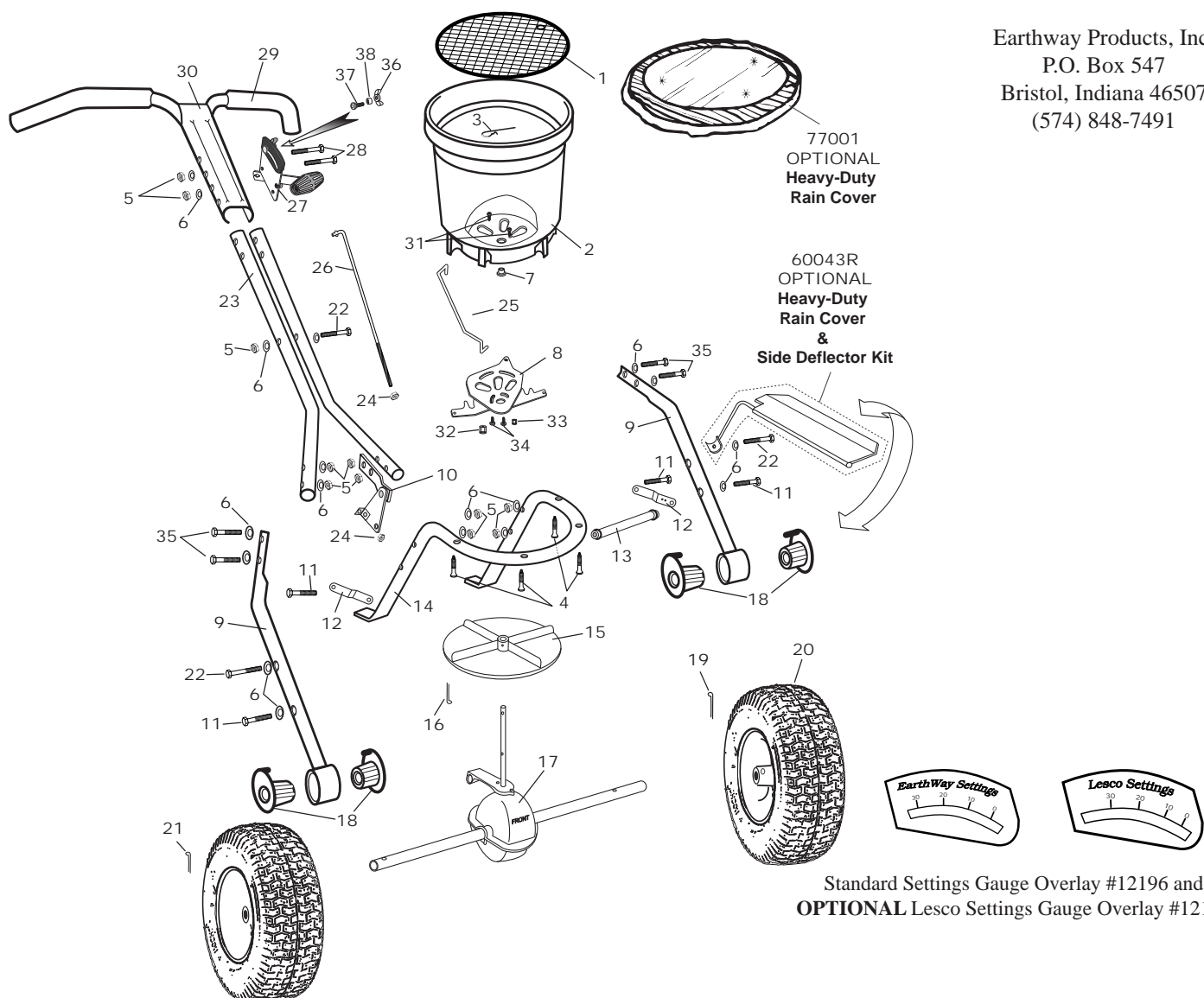
Part Number

Part Description

Call (574) 848-7491, 800-294-0671,

or email: parts@earthway.com for current prices.

Earthway Products, Inc.
P.O. Box 547
Bristol, Indiana 46507
(574) 848-7491



C22HD & C22HDS PROFESSIONAL BROADCAST SPREADER

Key #	Part #	Description	Key #	Part #	Description
1	40002	ROUND SCREEN	20	19117	13" DIA PNEU TIRE DRIVE
2	60152	HOPPER ASSEMBLY	21	36104	3/16 X 1" COTTER PIN S.S.
3	33117	AGITATOR	22	36205	1/4-20 X 2 1/4" HHCS S.S.
4	31104	#14 X 1 1/2 TYPE 25 FHPS ZINC	23	24301	HANDLE SHAFTS WELDED (C22HDS)
5	36300	1/4-20 NYLON INSERT LOCKNUT S.S.	23	25301	HANDLE SHAFT (C22HD)
6	36404	1/4 CUPPED WASHER S.S.	24	36305	1/4-20 HEX NUT STAINLESS STEEL
7	12220	GEAR BOX BUSHING	25	44251	PIVOT ROD
8	12278	SHUT OFF PLATE ASSEMBLY - COMMERCIAL	26	42256	CONTROL ROD
9	24202	LOWER HANDLE (C22HDS) COMPLETE	27	60298	GAUGE & LEVER ASSEMBLY
9	25202	LOWER HANDLE COMPLETE (C22HD)	28	36207	1/4-20 X 2 3/4" HHCS S.S.
10	60299	PIVOT & BRACKET ASSEMBLY (C22/C24)	29	12273	GRIP 9.75" LONG
11	36200	1/4-20 X 1 1/2" HHCS S.S.	30	60069	UPPER HANDLE ASSEMBLY W/GRIPS C-SERIES PAINTED
12	42237	FRAME BRACE	30	60070	UPPER HANDLE ASSEMBLY W/GRIPS C-SERIES STAINLESS
13	24704	CROSS BRACE (11.125")	31	36208	#6 X 3/8" TYPE 25 PHPS S.S.
14	24100	FRAME (C22HDS)	32	11927	SHUTOFF SUPPORT- LARGE
14	25102	FRAME PAINTED (C22HD)	33	11926	SHUTOFF SUPPORT- SMALL
15	12109	IMPELLER (9" DIA)	34	31138	#8 X 3/8" PMT #8 HD COARSE BLACK
16	36105	1/8" X 1 1/4" COTTER PIN S.S.	35	36209	1/4-20 X 1 3/4" HHCS S.S.
17	60334	GEAR BOX & AXLE ASSEMBLY	36	60027	WING NUT ASSEMBLY BLACK
18	12352	BEARING (COMMERCIAL)	37	37100	1/4-20 X 1" CARRIAGE BOLT ZINC
19	36103	3/16 X 2" COTTER PIN S.S.	38	12147	SPACER (PIVOT LINK)