

GROUP 4A INSECTICIDE



**MERIT<sup>®</sup>**

**0.5 G Insecticide**

**For systemic insect control in turfgrass and landscape ornamentals.**

**ACTIVE INGREDIENT:**

Imidacloprid, 1-[(6-Chloro-3-pyridinyl)methyl]-N-nitro-2-imidazolidinimine 0.5%

**OTHER INGREDIENTS:** ..... 99.5%

**TOTAL:** ..... 100.0%

**EPA Reg. No. 101563-63**

**EPA Est. No.**

**STOP – READ THE LABEL BEFORE USE**

**KEEP OUT OF REACH OF CHILDREN**

**CAUTION**

**PARA EL USUARIO:** Si usted no lee o entiende inglés, no use este producto hasta que le hayan explicado completamente las instrucciones que figuran en la etiqueta.

**(TO THE USER:** If you cannot read or understand English, do not use this product until the label has been fully explained to you.)

See Back Panel for Complete Precautionary Statements and Directions for Use.

For MEDICAL and TRANSPORTATION Emergencies ONLY Call 24 Hours A Day  
1-800-424-9300

For PRODUCT USE Information Call 1-800-331-2867

**FIRST AID**

<b>If swallowed:</b>	<ul style="list-style-type: none"><li>• Call a poison control center or doctor immediately for treatment advice.</li><li>• Have person sip a glass of water if able to swallow.</li><li>• Do not induce vomiting unless told to do so by a poison control center or doctor.</li><li>• Do not give anything by mouth to an unconscious person.</li></ul>
<b>If on skin or clothing:</b>	<ul style="list-style-type: none"><li>• Take off contaminated clothing.</li><li>• Rinse skin immediately with plenty of water for 15 - 20 minutes.</li><li>• Call a poison control center or doctor for treatment advice.</li></ul>
<b>If in eyes:</b>	<ul style="list-style-type: none"><li>• Hold eye open and rinse slowly and gently with water for 15 - 20 minutes. Remove contact lenses, if present, after the first 5 minutes, then continue rinsing eye.</li><li>• Call a poison control center or doctor for treatment advice.</li></ul>

In case of emergency call toll free the Environmental Science U.S., LLC Emergency Response Telephone No. 1-800-424-9300. Have a product container or label with you when calling a poison control center or doctor, or going for treatment.

**NOTE TO PHYSICIAN:** No specific antidote is available. Treat the patient symptomatically.

## PRECAUTIONARY STATEMENTS

### HAZARDS TO HUMANS AND DOMESTIC ANIMALS

#### CAUTION

Harmful if swallowed or absorbed through skin. Causes eye irritation. Avoid contact with skin, eyes, or clothing. Wash thoroughly with soap and water after handling.

#### ENVIRONMENTAL HAZARDS

This product is highly toxic to aquatic invertebrates. Do not apply directly to water, or to areas where surface water is present or to intertidal areas below the mean high water mark. Do not contaminate water when disposing of equipment washwaters.

This chemical demonstrates the properties and characteristics associated with chemicals detected in groundwater. The use of this chemical in areas where soils are permeable, particularly where the water table is shallow, may result in groundwater contamination.

#### DIRECTIONS FOR USE

**It is a violation of Federal law to use this product in a manner inconsistent with its labeling.**

**Do not formulate this product into other end-use products.**

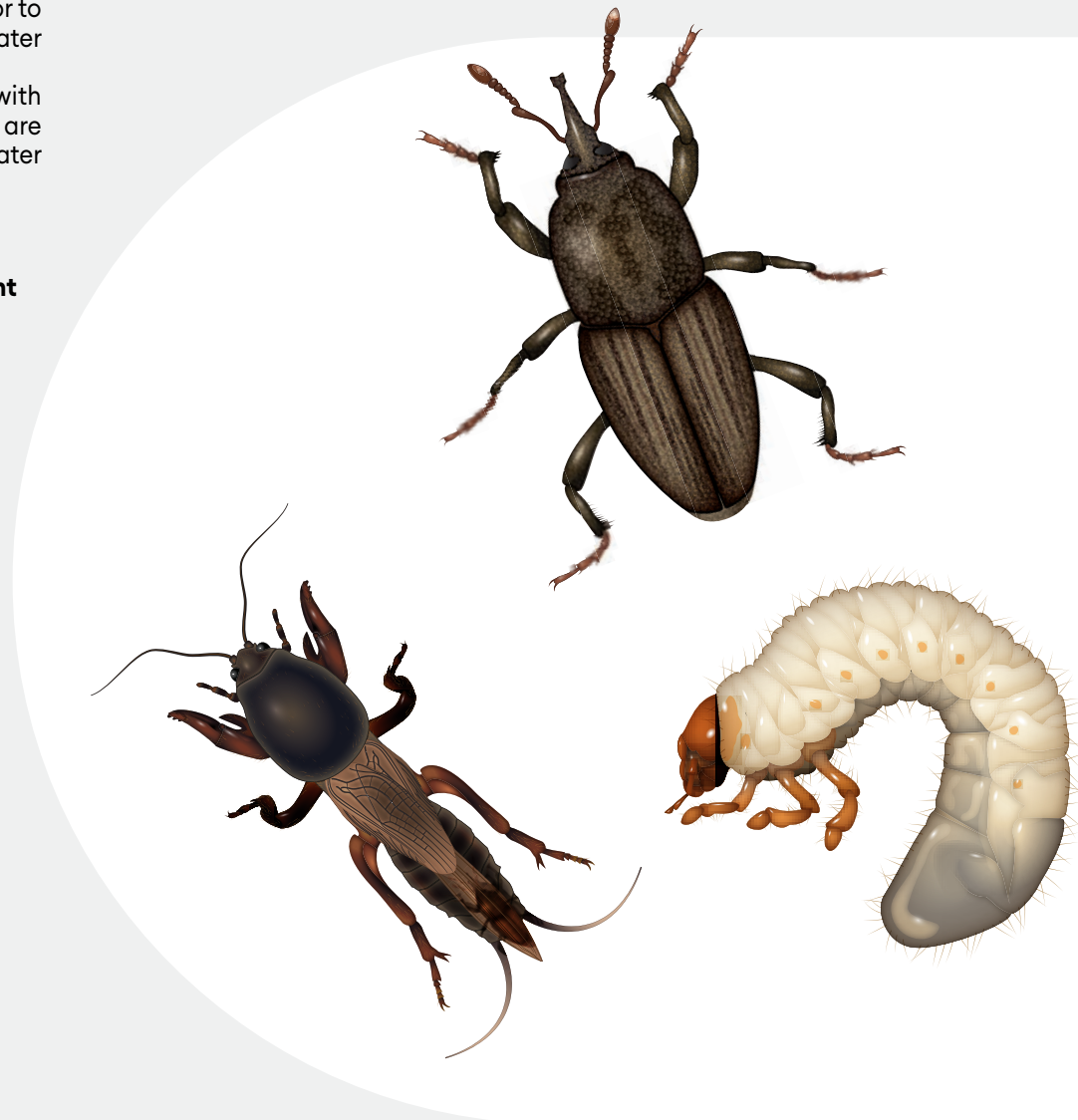
**SKU # 81001197**

**80867190E 221216AV1**

**30 Pounds**



**Billbugs • Mole Crickets • White Grubs**



12"



**MERIT<sup>®</sup>**

**0.5 G Insecticide**

## RESISTANCE MANAGEMENT RECOMMENDATIONS

Some insects are known to develop resistance to insecticides after repeated use. As with any insecticide, the use of this product should conform to resistance management strategies established for the use area.

Merit 0.5 G Insecticide contains a Group 4A insecticide. Insect biotypes with acquired or inherent resistance to Group 4A insecticides may eventually dominate the insect population if Group 4A insecticides are used repeatedly as the predominant method of control for targeted species.

### APPLICATION INFORMATION

#### APPLICATION TO TURFGRASS

Merit® 0.5 G Insecticide can be used for the control of soil-inhabiting pests of turfgrass such as northern and southern masked chafers, *Cyclocephala borealis*, *C. immaculate*, or *C. lurida*; Asiatic garden beetle, *Maladera castanea*; European chafer, *Rhizotrogus majalis*; Green June beetle, *Cotinus nitida*; May and June beetles, *Phyllophaga* spp.; Japanese beetle, *Popillia japonica*; Oriental beetle, *Anomala orientalis*; billbugs, *Sphenophorus* spp.; annual bluegrass weevil, *Listronotus maculicollis*; black turfgrass ataenius, *Ataenius spretulus*; *Aphodius* spp.; crane flies, *Tipula* spp.; chinch bugs, *Blissus* spp.; and mole crickets, *Scapteriscus* spp. Merit 0.5G Insecticide also can be used for suppression of cutworms.

Merit 0.5 G Insecticide can be used as directed on turfgrass in sites such as home lawns, business and office complexes, shopping complexes, multi-family residential complexes, golf courses, airports, cemeteries, parks, playgrounds, and athletic fields. Merit 0.5G Insecticide cannot be used on commercial sod farms.

The active ingredient in Merit 0.5 G Insecticide has sufficient residual activity so that applications can be made preceding the egg laying activity of the target pests. High levels of control can be achieved when applications are made proceeding or during the egg laying period. The need for an application can be based on historical monitoring of the site, previous records or experiences, current season adult trapping or other methods. Optimum control will be achieved when applications are made prior to egg hatch of the target pest, followed by sufficient irrigation or rainfall to move the active ingredient through the thatch. Do not apply when turfgrass areas are waterlogged or the soil is saturated with water. Adequate distribution of the active ingredient cannot be achieved when these conditions exist. The treated turf must be in such a condition that the rainfall or irrigation will penetrate vertically in the soil profile.

**Restrictions:** Applications cannot exceed a total of 80 lb (0.4 lb of active ingredient) per acre per year.

#### APPLICATION TO ORNAMENTALS

Merit 0.5 G Insecticide can be used as a broadcast application on ornamentals in commercial and residential landscapes. Merit 0.5 G Insecticide is a systemic product and will be translocated upward within the plant system. Optimum control will be achieved when applications are followed by sufficient mechanical incorporation, irrigation, or rainfall to move the active ingredient into the soil. Make application prior to anticipated pest infestation to achieve optimum levels of control.

**Restrictions:** Not for use in commercial greenhouses, nurseries, on sod farms or on grass grown for seed. For use on plants intended for aesthetic purposes or climatic modification and being grown in interior plantscapes, ornamental gardens, or parks, or on golf courses or lawns and grounds.

Do not apply more than 80 lb (0.4 lb of active ingredient) per acre per year.

#### APPLICATION EQUIPMENT

Apply Merit 0.5 G Insecticide uniformly over the area being treated with normally used granular application equipment. Both drop-type and rotary-type spreaders may be used to apply Merit 0.5 G Insecticide. Do not use spreaders that would apply the material in concentrated bands. Calibrate application equipment prior to use according to the manufacturer's directions. Check frequently to be sure equipment is working properly and distributing granules uniformly and accurately.

APPLICATION RATES						
CROP	PEST					DOSAGE MERIT 0.5 G INSECTICIDE
Turfgrasses	<b>Larvae of:</b> Annual bluegrass weevil      Black turfgrass ataenius      European crane fly      Northern masked chafer      Southern masked chafer Asiatic garden beetle      Cutworms (suppression)      Green June beetle      Oriental beetle Billbugs      European chafer      Japanese beetle <i>Phyllophaga</i> spp.					60 to 80 lb per acre or 1.4 to 1.8 lb per 1,000 sq ft
	For optimum control of grubs, billbugs, European crane fly and annual bluegrass weevil, make application prior to egg hatch of the target pest. Be sure to read "APPLICATION EQUIPMENT" Section of this label.					
	Chinch bug (suppression)      Mole crickets					80 lb per acre or 1.8 lb per 1,000 sq ft
	For suppression of chinch bugs, make application prior to the hatching of the first instar nymphs. If application is not made prior to egg hatch or when adults or large nymphs are present and actively tunneling, apply Merit 0.5 G Insecticide in combination with a remedial insecticide to minimize damage to turf.					
Consult your local State Agricultural Experiment Station, or State Extension Turf Specialists for more specific information regarding timing of application. <b>NOTE:</b> For optimum control, if rainfall does not occur within 24 hours after application, irrigate to move the active ingredient through the thatch. On golf courses, irrigate treated areas following application. Avoid mowing turf or lawn area until after irrigation or rainfall has occurred so that uniformity of application will not be affected. <b>RESTRICTION:</b> Do not apply more than 80 lb (0.4 lb of active ingredient) per acre per year.						

APPLICATION RATES FOR USE ON ORNAMENTALS		
CROP	PEST	DOSAGE MERIT 0.5 G INSECTICIDE
Landscape Plantings (including trees, shrubs, evergreens, flowers, foliage plants, and ground covers)	White grub larvae (such as Japanese beetle larvae, Chafers, <i>Phyllophaga</i> spp. Asiatic garden beetle, Oriental beetle)	1.4 to 1.8 lb per 1,000 sq ft
Apply as a broadcast treatment. Prior to application, remove black plastic or other weed barrier material that will not permit water permeability. <b>NOTE:</b> For optimum control mechanical incorporation, irrigation or rainfall should occur within 24 hours after application to move the active ingredient into soil. Avoid runoff or puddling of irrigation water following application. Refer to label sections on application equipment and spreader settings. Do not apply this product, by any application method, to linden, basswood or other Tilia species.		

**SPREADER SETTINGS FOR MERIT 0.5 G INSECTICIDE**

The following chart can be used as a guide in establishing an accurate rate of Merit 0.5 G Insecticide. Application rates will vary depending upon speed, equipment wear and condition of spreader. Carefully calibrate application equipment prior to commercial use of this product.

SPREADER	SPEED (mph)	SETTINGS		SPREADER	SPEED (mph)	SETTINGS	
		60 lb/A or 1.4 lb/1,000 sq ft	80 lb/A or 1.8 lb/1,000 sq ft			60 lb/A or 1.4 lb/1,000 sq ft	80 lb/A or 1.8 lb/1,000 sq ft
Earthway 10' Rotary	3	12	13	Scott's ProTurf R-8A, SR2000, Accupro 2000	3	H.5	I
Gandy Turf Tender 24"	3	11	14	Scott's PF-1, PF-2, PF-3, PF-4 Drop	3	2.75	3.25
Gandy Turf Tender 42"	3	14	15	Scott's SS-1 Drop	3	2.75	3.25
Lely	4.5	2.25	2.5	Spyker Model 34	3	3.1	3.3
Lesco Model 6000 / 021820	3	A	A.5	Vicon Model PS-203	4.5	12	15
PSB Prizelawn CBR-III	3	F.5	G.5				

**STORAGE AND DISPOSAL**

Do not contaminate water, food, or feed by storage or disposal.

**Pesticide Storage:** Store in a cool, dry place and in such a manner as to prevent cross contamination with other pesticides, fertilizers, food, and feed. Store in original container and out of the reach of children, preferably in a locked storage area.

Handle and open container in a manner as to prevent spillage. If material is spilled for any reason or cause, carefully contain any spilled material to prevent non-target contamination. Do not walk through spilled material and dispose of as directed for pesticides above. Refer to Precautionary Statements on label for hazards associated with the handling of this material. In spill or leak incidents, keep unauthorized people away. You may contact the Environmental Science U.S., LLC Emergency Response Team for decontamination procedures or any other assistance that may be necessary. The Environmental Science U.S., LLC Emergency Response Telephone No. is 1-800-424-9300 or contact Chemtrec at 1-800-424-9300.

**Pesticide Disposal:** Wastes resulting from the use of this product may be disposed of on site or at an approved waste disposal facility.

**Container Handling: Non-refillable container.** Do not reuse or refill this container. Completely empty bag into application equipment. Offer for recycling, if available, or dispose of empty bag in a sanitary landfill, by incineration, or if allowed by the state and local authorities, by burning. If burned, stay out of smoke.

**RESTRICTIONS**

Do not apply Merit 0.5 G Insecticide to areas which are waterlogged or saturated, which will not allow penetration into the root zone of the plant. Do not apply more than 80 lb (0.4 lb of active ingredient) per acre per year.

Treated areas may be replanted with any crop specified on an imidacloprid label, or with any crop for which a tolerance exists for the active ingredient.

For crops not listed on an imidacloprid label, or for crops for which no tolerances for the active ingredient have been established, a 12-month plant-back interval must be observed.

**IMPORTANT: READ BEFORE USE**

Read the entire Directions for Use, Conditions, Disclaimer of Warranties and Limitations of liability before using this product.

If terms are not acceptable, return the unopened product container at once. By using this product, user or buyer accepts the following conditions, disclaimer of warranties and limitations of liability.

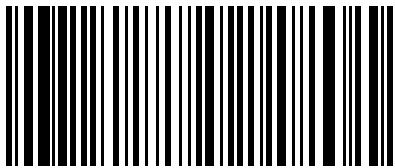
**CONDITIONS:** The directions for use of this product are believed to be adequate and must be followed carefully. However, because of manner of use and other factors beyond Environmental Science U.S., LLC's control it is impossible for Environmental Science U.S., LLC to eliminate all risks associated with the use of this product. As a result, crop injury or ineffectiveness is always possible. All such risks shall be assumed by the user or buyer.

**DISCLAIMER OF WARRANTIES:** TO THE EXTENT CONSISTENT WITH APPLICABLE LAW, ENVIRONMENTAL SCIENCE U.S., LLC MAKES NO OTHER WARRANTIES, EXPRESS OR IMPLIED, OF MERCHANTABILITY OR OF FITNESS FOR A PARTICULAR PURPOSE OR OTHERWISE, THAT EXTEND BEYOND THE STATEMENTS MADE ON THIS LABEL. No agent of Environmental Science U.S., LLC is authorized to make any warranties beyond those contained herein or to modify the warranties contained herein. TO THE EXTENT CONSISTENT WITH APPLICABLE LAW, ENVIRONMENTAL SCIENCE U.S., LLC DISCLAIMS any liability whatsoever for special, incidental or consequential damages, resulting from the use or handling of this product.

**LIMITATIONS OF LIABILITY:** TO THE EXTENT CONSISTENT WITH APPLICABLE LAW, THE EXCLUSIVE REMEDY OF THE USER OR BUYER FOR ANY AND ALL LOSSES, INJURIES OR DAMAGES RESULTING FROM THE USE OR HANDLING OF THIS PRODUCT, WHETHER IN CONTRACT, WARRANTY, TORT, NEGLIGENCE, STRICT LIABILITY OR OTHERWISE, SHALL NOT EXCEED THE PURCHASE PRICE PAID, OR AT ENVIRONMENTAL SCIENCE U.S., LLC'S ELECTION, THE REPLACEMENT OF PRODUCT.

Envu and the Envu logo are trademarks and Merit® is a registered trademark owned by Environmental Science U.S., LLC or one of its affiliates.

**PRODUCED FOR**  
**Environmental Science U.S., LLC**  
**5000 CentreGreen Way, Suite 400**  
**Cary, NC 27513**  
**Product of China**



(01)08101121001203