

**READ ENTIRE LABEL BEFORE EACH USE
FOR PET USES: USE ONLY ON DOGS
PRECAUTIONARY STATEMENTS
Hazards To Humans & Domestic Animals
CAUTION**

Harmful if absorbed through skin. Avoid inhalation of spray mist. Causes eye irritation. Avoid contact with skin, eyes or clothing. Wash thoroughly with soap and water after handling and before eating, drinking, chewing gum or using tobacco. Remove and wash contaminated clothing before reuse. Avoid contamination of feed and food stuffs. **ANIMALS:** Do not spray directly in/on eyes, mouth or genitalia of pets. Use only on dogs. Do not use on cats or kittens. Do not use on puppies less than twelve (12) weeks old. Consult a veterinarian before using this product on debilitated, aged, pregnant, medicated or nursing animals. Sensitivities may occur after using any pesticide product for pets. If signs of sensitivity occur, bathe your pet with mild soap and rinse with large amounts of water. If signs continue, consult a veterinarian immediately.

Environmental Hazards

This product is toxic to fish. Do not apply to any body of water. Do not contaminate water when disposing of equipment washwaters.

FIRST AID

If Inhaled: Move person to fresh air. If person is not breathing, call 911 or an ambulance, then give artificial respiration, preferably by mouth-to-mouth, if possible. Call a poison control center or doctor for further treatment advice.
If on skin or clothing: Take off contaminated clothing. Rinse skin immediately with plenty of water for 15-20 minutes. Call a poison control center or doctor for treatment advice.
If in eyes: Hold eye open and rinse slowly and gently with water for 15-20 minutes. Remove contact lenses, if present, after the first 5 minutes, then continue rinsing eye. Call a poison control center or doctor for treatment advice.
Have the product container or label with you when calling a poison control center or doctor, or going for treatment.

Physical or Chemical Hazards

Contents under pressure. Do not use or store near heat or open flame. Do not puncture or incinerate container. Exposure to temperatures above 130°F may cause bursting. Do not use this product in or on electrical equipment due to the possibility of shock hazard.

DIRECTIONS FOR USE

It is a violation of Federal law to use this product in a manner inconsistent with its labeling.

STORAGE AND DISPOSAL

Do not contaminate water, food or feed by storage or disposal. **STORAGE:** Do not store near heat or open flame. Store in cool dry area away from children. **DISPOSAL:** Do Not Puncture or Incinerate! If empty: Place in trash or offer for recycling if available. If partly filled: Call your local solid waste agency or 1-800-CLEANUP for disposal instructions.

Not for use on plants being grown for sale or other commercial use, or for commercial seed production, or for research purposes. For use on plants intended for aesthetic purposes or climatic modification and being grown in ornamental gardens or parks, or on golf courses or lawns and grounds.

Do not use in the edible product areas of food/feed processing plants, restaurants or other areas where food/feed is commercially prepared or processed. Do not use in serving areas while food is exposed or facility is in operation. Serving areas are areas where prepared foods are served such as dining rooms but excluding areas where foods may be prepared or held. Not for use in Federally Inspected Meat and Poultry Plants.

In the home, cover all food handling surfaces and cover or remove all food and cooking utensils, or wash thoroughly after treatment. Exposed food should be covered or removed.

NONFOOD AREAS: ERADICATOR Multi-Purpose Insect Spray may be applied in non-food/feed areas. Nonfood/feed establishment areas are areas such as garbage rooms, lavatories, floor drains (to sewers), entries and vestibules, offices, locker rooms, machine rooms, boiler rooms, mop closets and storage (after canning or bottling).

SHAKE WELL BEFORE USING

Remove protective cap, hold container upright and spray from a distance of 12 to 15 inches. Remove birds and cover fish aquariums before spraying.

Spray until surface is just damp, but not to the point of wetness or run-off. Avoid excessive application.

Keep children and/or pets out of treated areas during treatment. Do not apply this product to or near children's toys. Vacate room after treatment and ventilate before reoccupying. Cover or remove fishbowl.

HOUSEFLIES, FRUIT FLIES, MOSQUITOES, GNATS, BLACK FLIES, SKIPPER FLIES, BLOW FLIES AND SMALL FLYING MOTHS: Close all doors and windows and spray room at the rate of 2 to 3 seconds per 1000 cubic feet. Direct spray to all parts of the room, especially windows and other light sources which attract these insects. Keep nozzle in constant motion. Upon reentry, open windows and ventilate for at least 2 hours. Repeat treatment once a month.

COCKROACHES, WATERBUGS, PALMETTO BUGS, SILVERFISH, FIREBRATS, CRICKETS, SCORPIONS, SPIDERS, MILLIPEDES, CENTIPEDES, SOWBUGS AND PILLBUGS: Spray into hiding places such as cracks and crevices, behind sinks, cabinets, along baseboards

and floors, around drains and plumbing, hitting insects with spray when ever possible. Upon reentry, open windows and ventilate for at least 2 hours. Repeat treatment once a month.

ANTS: Spray trails, nests and points of entry. Spray on ants where possible. Repeat treatment once a month.

INDIAN MEAL MOTHS, ANGOUMOIS GRAIN MOTHS: Close doors and windows, direct spray into all parts of room especially around stored food product containers, pallets and darkened areas. Spray 7 to 10 seconds for each 1000 cubic feet of space. Keep area closed for 15 minutes following treatment. Upon reentry, open windows and ventilate for at least 2 hours. Repeat treatment once a month.

EXPOSED STAGES OF CONFUSED FLOUR BEETLES, SAWTOOTHED GRAIN BEETLES, RED FLOUR BEETLES, RICE WEEVILS, GRANARY WEEVILS, GRAIN MITES: Spray into cracks and crevices, processing and handling equipment, around cartons or containers or other areas where these insects tend to congregate. Spray 30 seconds for each 100 square feet of surface. Keep area closed for 45 minutes to 1 hour after treatment. Upon reentry, open windows and ventilate for at least 2 hours. Repeat treatment once a month. Infested stored food products in the home should be disposed of. **CARPET BEETLES:** Spray directly on beetles, floors, baseboards, shelves and carpets. Repeat treatment once a month.

BEDBUGS: Spray mattresses, particularly around tufts and seams. Take beds apart and spray into all joints. Treat baseboards, moldings and floors. Allow all sprayed articles to dry thoroughly before reuse. After mattress is dry cover with mattress cover and sheet. Do not use mattress without cover. Repeat treatment once a month. **TO CONTROL CLOTHES MOTHS AND CARPET BEETLES** on wool and other proteinaceous fibers: Remove infested articles from storage, brush thoroughly, and air for several hours in sunlight, if possible. Apply spray liberally to empty chests, closets, bureaus and other storages directing the spray into cracks, joints and crevices. After airing, infested articles may be treated by spraying lightly, keeping nozzle at least three feet from fabric to avoid staining. Allow all sprayed articles to dry thoroughly before use. **IN ANIMAL QUARTERS AND MILK ROOMS:** For rapid control of House Flies, Mosquitoes, Gnats, and Small-Flying Moths. Remove animals prior to application. Close windows and doors and spray at the rate of 2 seconds per 1000 cubic feet of space. For best results, keep area closed for 10 minutes after spraying. Do not remain in treated area and ventilate after treatment is completed. Upon reentry, open windows and ventilate for at least 2 hours. Repeat treatment once a month.

TO TREAT LIVESTOCK: To protect beef cattle, dairy cattle, sheep, hogs and horses from attacks of Stable Flies, Horse Flies, Deer Flies, Face Flies, House Flies, Horn Flies, Mosquitoes, and Gnats. Spray about 3 seconds on each side being careful to spray back, withers and forelegs thoroughly. To protect from Face Flies, spray the face and head, but do not spray into eyes. Repeat treatment when flies are troublesome.

FOR SWINE: Do not ship animals for slaughter within 5 days of last treatment. **FOR CONTROL OF BEDBUGS AND MITES IN POULTRY HOUSES,** spray crevices of roost poles, cracks in walls, and cracks in nests where the bedbugs and mites hide.

FLEAS AND TICKS (ADULTS AND LARVAE): Remove and thoroughly clean or destroy pet bedding. Spray pet sleeping quarters, bed, entire floor and floor covering, with special attention to cracks and crevices around baseboards, and window and door frames. Infested upholstered furniture may also be treated with this product. A test application should be made to upholstery or drapery fabrics in an inconspicuous place before use. **TO CONTROL FLEAS AND TICKS ON DOGS.** Starting at the tail, stroke against the lay of the hair, spraying the parted fur in short bursts, directly behind the hand to insure penetrating the coat. Dampen the fur up to the head. Repeat application every two weeks if necessary.

FOR THE CONTROL OF GARDEN INSECTS: For use on roses, dahlias, asters and other ornamentals to kill Japanese Beetles hit by spray, as well as Whiteflies, Aphids, exposed Thrips, Spiders, Red Mites and Leafminers. May be used on plants, as well as a multi-purpose spray in small gardens and for spot treatments of incipient insect infestations to prevent spreading in large garden areas. May also be used on other plants such as African violets, asters, azaleas, begonias, camellias, carnations, chrysanthemums, dahlias, delphiniums, dogwood, English ivy, eunonymus, fuschia, geraniums, crassula, grape vine, Kentia palm, laurel, marigolds, rhododendrons, roses, rubber plants, snapdragons, stocks, wandering Jews and zinnias. Effective when used as directed against Whiteflies, Aphids, Spider and Red Mites, exposure Thrips, Lady Bugs, Japanese Beetles, Pavement Ants, Clover Mites and Army Worms. When spraying plants, do not operate closer than 18 inches. Use sweeping motion. Spray in one second bursts. Be cautious about wetting tender foliage, young plants and new growth. Do not spray plants when temperatures exceed 90°F. Contact insects directly whenever possible. Repeat treatment as infestations occur. **Notice:** Buyer assumes all responsibility for safety and use not in accordance with directions.

INGREDIENTS (CASE): Water (7732-18-5), Propane/n-Butane (68476-86-8), Isoparaffinic Hydrocarbon (64742-47-8), Permethrin (52645-53-1).

HMS RATINGS: HEALTH - 1, FLAMMABILITY - 1, REACTIVITY - 0, PERSONAL - A. Made in USA

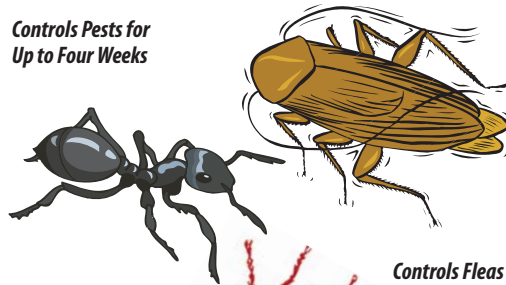
Manufactured by: **Agrisel USA, Inc.**
P.O. Box 3528
Suwanee, GA 30024

AGRISEL
U.S.A. INCORPORATED

ERADICATOR

Controls Bedbugs • Non Staining

**Controls Pests for
Up to Four Weeks**



**Controls Cockroaches,
Mosquitoes, Crickets,
Spiders, Scorpions,
and Many Other
Listed Insects**



**Controls Fleas
and Ticks on Dogs
for 14 Days**

For Use on Dogs and on Premises to Control Fleas and Ticks

**For Use on
Livestock and
Their Premises**

ACTIVE INGREDIENT:

*Permethrin 0.25%

OTHER INGREDIENTS: 99.75%

100.00%

1-(3-phenoxyphenyl)methyl (+/-) cis/trans 3-(2,2-dichloroethenyl)-2,2-dimethylcyclopropanecarboxylate (Cis/Trans ratio: Min. 35% (+/-) cis and max. 65% (+/-) trans.)

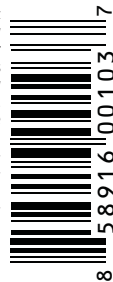
EPA REG. NO. 44446-62-72159 EPA EST. NO. 44446-TX-1

NET WT. 16 OZ. (454 g)

**KEEP OUT OF REACH OF CHILDREN
CAUTION**

SEE BACK PANEL FOR ADDITIONAL PRECAUTIONARY STATEMENTS

Multi-Purpose Insect Spray



60000078