

FIRST AID	
If Swallowed	<ul style="list-style-type: none"> • Call a Poison Control Center or doctor immediately for treatment advice. • Have person sip a glass of water if able to swallow. • Do not induce vomiting unless told to do so by the Poison Control Center or doctor. • Do not give anything by mouth to an unconscious person.
If Inhaled	<ul style="list-style-type: none"> • Move person to fresh air. • If person is not breathing, call 911 or an ambulance, then give artificial respiration, preferably by mouth-to-mouth, if possible. • Call a Poison Control Center or doctor for further treatment advice.
If On Skin Or Clothing	<ul style="list-style-type: none"> • Take off contaminated clothing. • Rinse skin immediately with plenty of water for 15-20 minutes. • Call a Poison Control Center or doctor for treatment advice.
If In Eyes	<ul style="list-style-type: none"> • Hold eye open and rinse slowly and gently with water for 15 - 20 minutes. • Remove contact lenses, if present, after the first 5 minutes, then continue rinsing eye. • Call a Poison Control Center or doctor for treatment advice.
Have the product container or label with you when calling a Poison Control Center or doctor, or going for treatment.	
NOTE TO PHYSICIAN: Carbaryl contains an N-methyl carbamate that inhibits cholinesterase. Atropine is antidotal. DO NOT use 2-PAM, opiates or cholinesterase-inhibiting drugs.	

ENVIRONMENTAL HAZARDS

This pesticide is extremely toxic to aquatic and estuarine invertebrates. Do not apply directly to water. Do not contaminate water by cleaning of equipment or disposal of wastes.

BEE CAUTION: This product is highly toxic to bees exposed to direct treatment or residues on blooming crops or weeds. Do not apply this product or allow it to drift to blooming crops or weeds if bees are visiting the treatment area.

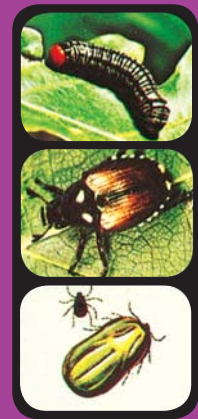
NOTE: Product freezing temperature 32° F. Satisfactory utility is restored after thawing and mixing of product. Repeated 0-10° freezing-thawing may impair utility.

Buyer assumes all risks of use, storage or handling of this material not in strict accordance with directions given herewith. Voluntary Purchasing Groups, Inc. warrants this product to conform to the chemical description on the label and for the purposes stated on the label. The limit of any liability incurred shall be the purchase price paid by the User or Buyer.

VOLUNTARY PURCHASING GROUPS, INC.
 230 FM 87
 BONHAM, TEXAS 75418
 Visit Us At: www.fertilome.com
 EPA Reg. No. 7401-38
 EPA Est. No. 7401-TX-1



ferti·lome[®]



Liquid
CARBARYL
 Garden Spray

- Can Be Used On Ornamentals, Home Lawns, Trees, Vegetables And Citrus Trees.
- 4 Teaspoons Makes 1 Gallon Of Spray.

ACTIVE INGREDIENT:
 Carbaryl: (1-naphthyl N-methylcarbamate) 23.7%

INERT INGREDIENTS: 76.3%

TOTAL: 100.00%

KEEP OUT OF REACH OF CHILDREN
CAUTION
 See Back Panel For Precautionary Statements
 NET CONTENTS ONE QUART (32 Fl. Ozs.)

DIRECTIONS FOR USE

It is a violation of Federal Law to use this product in a manner inconsistent with its labeling.

READ ALL DIRECTIONS FOR USE AND PRECAUTIONARY STATEMENTS BEFORE USING.

Apply when air is calm to avoid drift and contact with eyes and skin. Start spraying at the farthest corner of the treatment area and work backward to avoid contact with wet surfaces. Allow spray to dry in treated areas before re-entering. For Trees taller than 10 feet, consider hiring a licensed professional. Spray thoroughly to wet upper and lower leaf surfaces, stems and branches. Do not repeat applications more than once a week.

1. WHAT IS THIS PACKAGE FOR?

ferti-lome® LIQUID CARBARYL GARDEN SPRAY is an easy to use Insecticide for use on Home Ornamentals, Lawns, Fruit Trees, Shade Trees, Vegetables and Citrus Trees.

2. HOW DO YOU USE IT?

SHAKE WELL BEFORE USING. Mix 4 teaspoons per gallon of finished spray desired. Use on **Roses, Flowers, Ornamentals, Shrubs and Shade Trees.** Controls **Ants, Apple Aphid, Armyworm, Azalea Leafminer, Bagworms, Birch Leafminer, Blister Beetle, Cutworms, Fuller Rose Beetle, Grasshoppers, Japanese Beetle, Leafhoppers, Mealybugs, certain Leafminers, Rose Aphid, Rose Chafer, Scale Insects, Tent Caterpillar and Webworms.** Start spraying when Insects or damage appear. Spray thoroughly covering both sides of leaves, stems and branches. Repeat application in 7-10 days as necessary to maintain control.

VEGETABLES: Mix 4 teaspoons per gallon of finished spray desired. Spray

1

thoroughly to wet upper and lower leaf surfaces, stems and branches. Follow Pre-Harvest Intervals (PHI) listed in () following each individual Crop and Plant. Subsequent planting of food and feed crops in treated soil must be made with crops on this or other Carbaryl labels. CABBAGE (3), BROCCOLI (3), BRUSSELS SPROUTS (3), CAULIFLOWER (3), RADISHES (7), CARROTS (7), CELERY (14), CORN (2), CUCUMBER (3), MELONS (3), PUMPKIN (3), SQUASH (3), HEAD LETTUCE (14), LEAF LETTUCE (14), OKRA (3), POTATO (7), TOMATO (3), EGGPLANT(3), PEPPER (3).

Controls these listed Insects: Assorted Beetles, Armyworms, Cutworms, European Corn Borer, Tarnished Plant Bug, Leafhoppers, Grasshoppers, Harlequin Bug, Chinch Bugs, Stink Bugs, Tomato Hornworms.

FRUIT AND CITRUS TREES INCLUDING: APPLES (3), GRAPEFRUIT, LEMONS, LIMES, ORANGES, TANGERINES, PEACHES (3), APRICOTS (3), NECTARINES (3), PLUMS (3), AND CHERRIES (3), mix 4 teaspoons of **ferti-lome® Liquid Carbaryl Garden Spray** per gallon of finished spray desired. Spray thoroughly to wet upper and lower leaf surfaces, stems and branches. For Trees taller than 10 feet, consider hiring a licensed professional. Do not repeat applications more than once a week.

For control of Apple Aphid, Apple Maggot, Bagworms, Tent Caterpillars, Gypsy Moth, Japanese Beetle, Codling Moth, Cucumber Beetles, Fruit Tree Leafrollers, Lesser Peach Tree Borer, Plum Curculio, Red-Banded Leaf roller, Citrus Cutworm, Orange Tortrix, and Scale.

HOME LAWNS: Mix ½ pint in 15 gallons of water and apply to 500 sq. ft. of Home Lawn to control Ants, Armyworms, Cutworms, Earwigs, European Chafer, Grasshoppers, Springtails. Apply to freshly mowed Lawns. For CHINCH BUGS, SOD WEBWORMS, mix 1 pint in 15 gallons of water and apply to 500 sq. ft. of mowed Lawn. Treat entire grass area rather than just

damaged areas. Irrigation of Lawn grass area before treatment will aid in penetration of Insecticide into turf grass. Repeat application in 2-3 weeks if necessary. Do not allow children, pets or domestic animals on treated Lawn until the Insecticide is washed off the grass into the soil by sprinkling or rainfall and grass is completely dry.

3. HERE ARE THE RESULTS YOU MAY EXPECT!

ferti-lome® LIQUID CARBARYL GARDEN SPRAY used according to directions, controls certain Insects on Plants, Trees.

STORAGE AND DISPOSAL

STORAGE: Keep out of reach of children and pets. Store in original containers only. Store in cool, dry place and avoid excess heat.

DISPOSAL: If Empty: Do not reuse this container. Place in trash or offer for recycling if available. **If Partly Filled:** Call your Local Solid Waste Agency for disposal instructions. Never place unused product down any indoor or outdoor drain.

PRECAUTIONARY STATEMENTS

HAZARDS TO HUMANS AND DOMESTIC ANIMALS

CAUTION: May be harmful if swallowed, inhaled or absorbed through skin. Avoid breathing vapors or spray mist. Avoid contact with eyes, skin or clothing. Avoid contamination of food and foodstuffs. Wash thoroughly with soap and water after handling. Remove contaminated clothing and wash clothing before reuse. Food utensils such as teaspoons and tablespoons should not be used for food purposes after use with pesticides.

USER SAFETY REQUIREMENTS

- Wear long-sleeved shirt, long pants, shoes plus socks and household lates or rubber gloves when mixing and applying this product.
- Wear a hat and eye protection when making overhead applications.
- Remove clothing immediately if pesticide soaks clothing. Change clothing as soon as possible after use.
- Wash the outside of gloves before removing. As with any pesticide product, wash hands thoroughly immediately after handling and before eating, smoking or using the toilet.
- Avoid contamination of food and feed.
- Do not allow children or pets to contact treated area until sprays have dried.

**VOLUNTARY PURCHASING
GROUPS, INC.**

230 FM 87

BONHAM, TEXAS 75418

Visit Us At: www.fertilome.com

EPA Reg. No. 7401-38

EPA Est. No. 7401-TX-1

