

TRUSTED SINCE 1926
BONIDE®

HOUSE GUARD®

Roach control

Inhibits reinfestation

by listed cockroaches for

6-months

Kills: ants, bedbugs, cockroaches,
fleas, spiders, ticks

ACTIVE INGREDIENTS:

| | |
|--------------------|---------|
| Novaluron..... | 0.20% |
| Deltamethrin..... | 0.06% |
| Pyriproxyfen..... | 0.02% |
| OTHER INGREDIENTS* | 99.72% |
| TOTAL: | 100.00% |

*Contains Petroleum Distillates

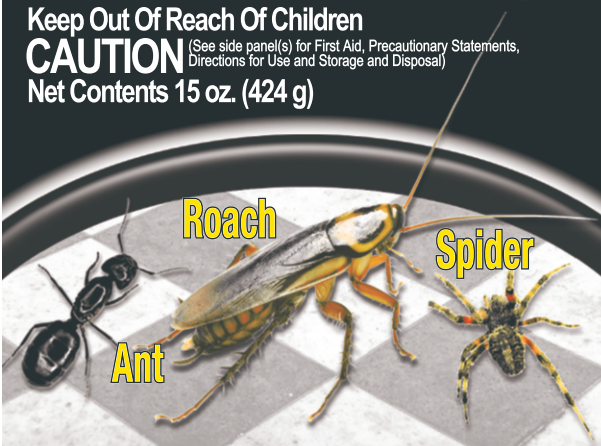
EPA Reg. No. 53883-415-4 EPA Est. No. 53883-TX-002

*DUAL
mode of
ACTION*

Keep Out Of Reach Of Children

CAUTION (See side panel(s) for First Aid, Precautionary Statements, Directions for Use and Storage and Disposal)

Net Contents 15 oz. (424 g)



FOR USE IN AND AROUND: Apartments, Campgrounds, Non-Food Storage Areas, Homes, Hotels, Motels, Resorts, Schools, Supermarkets, Transportation Equipment (Buses, Boats, Ships, Trains, Trucks), Utilities, Warehouses, and other Commercial and Industrial Buildings.

DIRECTIONS FOR USE: It is a violation of Federal law to use this product in a manner inconsistent with its labeling.

- Remove pets, birds, and cover fish aquariums before spraying.
- Test first for staining on an inconspicuous area prior to use.
- Hold container upright and DO NOT spray up into air.
- Remove protective cap and direct spray away from face.
- Hold can 12-15 inches from surface being sprayed.
- Press button down and spray as directed.

NON-FOOD/NON-FEED AREAS: Examples of non-food/non-feed areas include garbage rooms, lavatories, floor drains (to sewers), entries and vestibules, offices, locker rooms, machine rooms, boiler rooms, mop closets and storage (after packaging, canning or bottling). All areas that insects inhabit or through which insects may enter should be treated.

CRACK AND CREVICE APPLICATION: Use this product with the supplied actuator and injection tubes. Inject this product into cracks and crevices or void spaces where insects may be harboring, living or breeding. Place injector tip into cracks, crevices, holes and other small openings. Apply product for one second. For light infestations move injector tip along cracks while treating at the rate of three linear feet per second. For heavy infestations move injector tip along at one linear foot per second. For wall and equipment voids calculate the void's cubic area and treat at the rate of five to ten seconds per three cubic feet. Several holes may be required in long-running voids. Reapply **once every 6 months** if necessary. **SPOT TREATMENT:** Apply to storage areas, closets, around water pipes, doors and windows, behind and under refrigerators, cabinets, sinks, stoves and other equipment, shelves, drawers and similar areas. Contact as many insects as possible. Hold can at arm's length and apply at the rate of 1 second per 2 sq. ft. Reapply **once every 6 months** if necessary. **GENERAL SURFACE APPLICATION:** Hold can at arm's length and apply a light spray at the rate of 10 seconds per 100 sq. ft. Reapply **once every 6 months** if necessary. **INDOOR TREATMENTS:** This product is acceptable as a pesticide to use in all areas of official establishments operating under the Federal meat, poultry, shell egg grading, and egg products inspection programs. **CRAWLING INSECTS (SUCH AS: ANTS, BOOKLEGS, CARPET BEETLES, CENTPEDES, CLOVERMITES, CRICKETS, MILLPEDES, ROACHES, SILVERFISH, SOWBUGS, AND SPIDERS):** Apply as a crack and crevice treatment into cracks and crevices in all hiding places, behind baseboards, sinks, cabinets, meter boxes, door frames, windows and closets. Apply as a spot treatment or general surface application to breeding areas, nesting sites, hiding places and other places where crawling insects may be found.

BED BUGS: Remove linens and wash before reuse. Take bed apart and treat cracks, joints and interior of framework. Treat mattresses and box springs; especially tufts, folds, and edges. Also treat picture frames, baseboards, moldings and all cracks and crevices in the room. Allow to dry before remarking bed. Do not use in patient rooms in hospitals and nursing homes for treatment of bed bugs. May be used in conjunction with a bed bug proof mattress encasement. To treat furniture, such as couches and upholstered chairs, turn the piece upside down, lift the dust cover from the bottom and spray the interior frame. Replace the dust cover after frame treatment and turn piece right side up.

FOR EXPOSED ADULT AND LARVAL STAGES OF CARPET BEETLES, CIGARETTE BEETLES, CONFUSED FLOUR BEETLES, DRUGSTORE BEETLES, GRAIN MITES, GRANARY WEEVILS, RED FLOUR BEETLES, RICE WEEVILS, AND SAWTOOTHED GRAIN BEETLES: Apply as a Crack and Crevice treatment into cracks and crevices of pantries, cabinets, food processing and handling equipment and other places where insects harbor. Apply around cartons, and containers, and other areas as where these insects tend to congregate. Infested stored products should be fumigated or treated by other effective methods using an approved product intended for this purpose.

FLEAS AND TICKS ON SURFACES: Remove pet bedding and destroy or clean thoroughly. Spray pet resting quarters. Adult fleas and larvae contacted by spray will be killed. Put fresh bedding down once spray has dried. DO NOT spray animals directly. Hold product 36" above floor and direct toward floor and lower walls at a rate of 10 seconds per 100 sq. ft. making sure that all floor (rugs and carpets), sofa and chair surfaces are contacted. Treat adjacent cracks and crevices such as behind baseboards and edges of carpet and floor covers. Treat higher cracks such as upper door jams and window framing, behind pictures and other areas where females may crawl to lay eggs. Treatment may be repeated daily if necessary. Keep area closed for 15 minutes. Open and ventilate before reoccupying. The insect growth regulators in this product work for up to 7 months by inhibiting the development of the immature stages of the flea and preventing them from reaching the biting adult stage. For best results, pets should be treated with an appropriate product before allowing them to return to the treated area.

FIRST AID

- IF ON SKIN:**
- Take off contaminated clothing
 - Rinse skin immediately with plenty of water for 15-20 minutes.
 - Call a poison control center or doctor for treatment advice.

Have the product container or label with you when calling a poison control center or doctor, or going for treatment. You may also contact SafetyCall® International for emergency medical treatment at (866) 897-8050.

NOTE TO PHYSICIAN: Contains petroleum distillate. Vomiting may cause aspiration pneumonia.

PRECAUTIONARY STATEMENTS

HAZARDS TO HUMANS AND DOMESTIC ANIMALS

CAUTION: Avoid contact with skin or clothing. Wash thoroughly with soap and water after handling and before eating, drinking, chewing gum, using tobacco, or using the toilet.

ENVIRONMENTAL HAZARDS

This product is toxic to fish and aquatic organisms. Do not apply directly to any body of water. To protect the environment, do not allow pesticide to enter or run off into storm drains, drainage ditches, gutters or surface waters. Applying this product in calm weather when rain is not predicted for the next 24 hours will help to ensure that wind or rain does not blow or wash pesticide off the treatment area.

PHYSICAL AND CHEMICAL HAZARDS

Flammable. Contents under pressure. Keep away from heat, sparks and open flame. Do not puncture or incinerate container. Do not use in the vicinity of open flame or pilot lights. Do not apply to plastic, painted or varnished surfaces or directly into electronic equipment such as radios, TVs, computers, etc. Do not apply where electrical shock hazards exist.

STORAGE AND DISPOSAL

Do not contaminate water, food or feed by storage or disposal.

STORAGE: Store upright at room temperature. Do not store near heat or open flame. Store in an area away from children and pets.

PESTICIDE DISPOSAL AND CONTAINER HANDLING: Do not puncture or incinerate! Non-refillable container. Do not reuse or refill this container.

If empty: Place in trash or offer for recycling, if available. **If partly filled:** Call your local solid waste agency for disposal instructions.

NOTICE: Read the entire Directions for Use and Conditions of Sale and Limitation of Warranty and Liability before buying or using this product. If the terms are not acceptable, return the product at once, unopened, and the purchase price will be refunded.

Bonide Products
6301 Sutliff Road
Oriskany, NY 13424
©Bonide Products
All Rights Reserved

DOT 2Q M5749 DSC

