

### Important Battery Information

- Only use Alkaline batteries. We recommend the use of Duracell or Energizer batteries.
- Do not mix old and new batteries. Always replace ALL the batteries at the same time.
- When the camera is not in use, please remove the batteries.

### Moultrie Limited Warranty

This product has been thoroughly tested and inspected before shipment. It is guaranteed from defects in material and workmanship from the date of purchase for 1 year. Under this limited guarantee we agree to replace or repair free of charge any part or parts which have been found to be defective in original material or workmanship. Should you require in-warranty service, call our Customer Service Department. If your problem cannot be addressed over the telephone, we may need you to send us your defective product plus proof of purchase.

You must register your camera at [www.moultriefeeders.com/warranty](http://www.moultriefeeders.com/warranty) to activate your 1-year warranty.

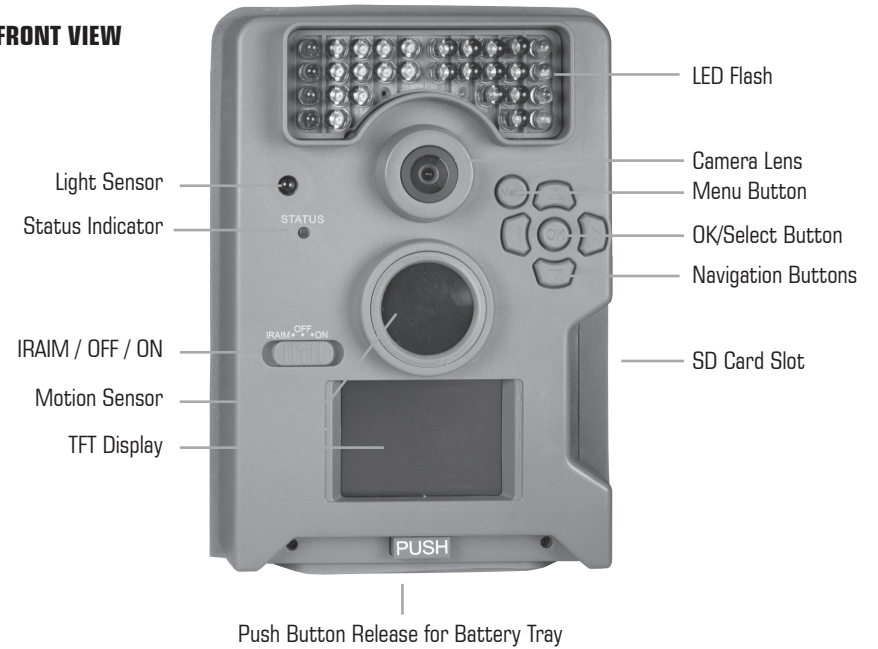


# Instructions for D-555i Digital Game Camera

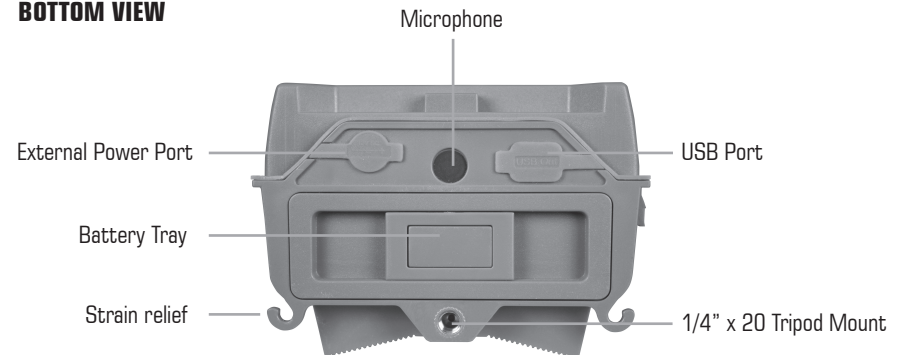
THANK YOU for your purchase of the D-555i Digital Game Camera. Please read this booklet before using the unit. If you should have any questions about this product or any other Moultrie product, please contact us using the information on the back of this booklet. You must register your camera at [www.moultriefeeders.com/warranty](http://www.moultriefeeders.com/warranty) to activate your 1-year warranty.

## I CAMERA OVERVIEW

### FRONT VIEW



### BOTTOM VIEW



Our Service Department will gladly answer any questions you have.  
Call 800-653-3334, Monday - Friday, 8:00 AM to 5:00 PM CST.  
[www.moultriefeeders.com](http://www.moultriefeeders.com)

## **IRAIM / OFF / ON**

**IR Aim** - (default Off) When IR Aim is ON and the PIR sensor detects motion, the red LED on the front of the camera will come on for 2 seconds and then shut off.

## **MENU BUTTON**

The Menu Button selects Camera Setup or Main Screen. When camera mode is selected, the LEFT and RIGHT buttons navigate through the menu options. The Menu Button is also used to wake-up the camera and turn on the display when the camera is in power saving (or sleep) mode.

## **OK, UP/DOWN and LEFT/RIGHT BUTTONS**

The OK button selects the item to be changed. The UP/DOWN and LEFT/RIGHT buttons are used to step through the menu options. Pressing the OK button again, selects the option indicated on the display. The OK button is also used to manually take a picture.

## **BATTERY COMPARTMENT**

The camera is powered by six (6) C-cell alkaline batteries. Push the battery compartment release button to eject the battery tray. Hold your hand under the battery tray when ejecting. Install batteries as indicated on the engravings on the battery tray, taking care to note the correct polarity.

See Important Battery Information section on the back page of this manual.

## **SD CARD SLOT**

Accepts up to a 32GB SD Card for photo and video storage.

**NOTE:** An SD Card must be installed for the camera to operate (sold separately).

## **USB PORT**

Download still pictures and video onto your computer by connecting a USB cable (sold separately) to the USB port.

## **EXTERNAL POWER PORT**

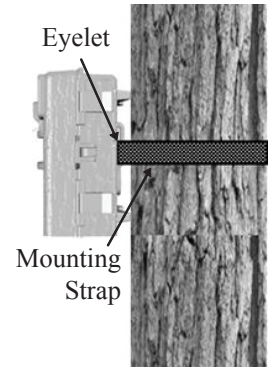
Accepts the Moultrie PowerPanel or Moultrie Battery Box accessories (sold separately) only. Refer to [www.moultriefeeders.com](http://www.moultriefeeders.com) for more information.

**NOTE:** The use of any other power source will void your warranty and possibly harm your camera.



## QUICK START INSTRUCTIONS

- STEP 1** Press the PUSH BUTTON RELEASE on the bottom of Camera and use the knob to pull the slide-out Battery Tray. Install six (6) C-cell alkaline batteries with polarities as indicated in the Battery Tray. Re-install the Battery Tray and insert your SD card.
- STEP 2** Thread the provided Mounting Strap through the Eyelets on the back of the camera and secure to a tree or pole approximately 36" from the ground as shown.
- STEP 3** Turn Camera on by sliding IR AIM/OFF/ON switch to the ON position.
- STEP 4** Press the MENU button to enter the main menu, press up and OK to select camera setup. Press OK to enter General setup. Set Time and Date by pressing OK, using UP/DOWN to adjust selected field, LEFT/RIGHT to move to the next field and OK when done.
- STEP 5** Press MENU button to return to main menu screen. Press DOWN and OK to select CAPTURE MODE.
- STEP 6** Switch camera to IR Aim. Aim camera using motion detection to determine target area. Walk in front of the camera at the desired distance and the camera LED will flash showing the covered area.
- STEP 7** Switch camera to ON. Your camera will now automatically take pictures whenever an animal is detected in range, based on the default settings below.



FCC Statements



Moultrie Products, LLC  
MCG-12592

Note: Changes and modifications not expressly approved by the party responsible could void the user's authority to operate this device.

This device complies with Part 15 of the FCC Rules. Operation is subject to the following two conditions: (1) This device may not cause harmful interference, and (2) this device must accept any interference received, including interference that may cause undesired operation.

NOTE: THE MANUFACTURER IS NOT RESPONSIBLE FOR ANY RADIO OR TV INTERFERENCE CAUSED BY UNAUTHORIZED MODIFICATIONS TO THIS EQUIPMENT. SUCH MODIFICATIONS COULD VOID THE USER'S AUTHORITY TO OPERATE THE EQUIPMENT.

NOTE: This device complies with the limits for a Class B digital device, pursuant to Part 15 of the FCC Rules. These limits are designed to provide reasonable protection against harmful interference in a residential installation. This device generates, uses, and can radiate radio frequency energy and, if not installed and used in accordance with the instructions, may cause harmful interference to radio communications. However, there is no guarantee that interference will not occur in a particular installation. If this device does cause harmful interference to radio or television reception, which can be determined by turning the equipment off and on, the user is encouraged to try to correct the interference by one or more of the following measures:

- Reorient or relocate the receiving antenna.
- Increase the separation between the equipment and receiver.
- Connect the equipment into an outlet on a circuit different from that to which the receiver is connected.
- Consult the dealer or an experienced radio/TV technician for help.



## DEFAULT SETTINGS

General		Motion Detect		Time Lapse	
DATE/TIME:	01/01/99 12:00am	EVENT DELAY:	10 SECONDS	INTERVAL:	10 SECONDS
ERASE IMAGES:	NO	PHOTO OR VIDEO:	PHOTO	MULTI PROGRAM:	2 PROGRAM
CAPTURE MODE:	MOTION DETECT	PHOTO QUALITY:	HIGH (4 MP)	PROGRAM 1 WAKE UP:	6 AM
IR FLASH:	AUTO	MULTI-SHOTS:	OFF	PROGRAM 1 SLEEP:	9 AM
GEOTAGGING:	OFF	MOTION FREEZE:	ON	PROGRAM 2 WAKE UP:	4 PM
CAMERA NAME:	MOULTRIECAM	VIDEO LENGTH:	10 SECONDS	PROGRAM 2 SLEEP:	7 PM
TEMPERATURE:	FAHRENHEIT			PHOTO QUALITY:	HIGH (4 MP)

## IV CAPTURE MODES

You will see one of three status screen displays after you slide the IRAIM/OFF/ON switch to the ON position. After 15 seconds the camera will enter sleep mode and wake up when motion is detected.

### Motion Detect Mode - Photo

When the camera has been programmed for Motion Detect Mode - Photo, the camera will take still images when motion is detected. The following will be displayed on the Status Screen.

MOTION DETECT MODE	
PHOTO	10 SEC
Battery: 43%	
Est. Days: 0020 Days	
Taken/Capacity: 0021 / 034506	

### Motion Detect Mode - Video

When the camera has been programmed for Motion Detect Mode - Video, the camera will take video when motion is detected. The following will be displayed on the Status Screen.

MOTION DETECT MODE	
VIDEO	10 SEC
Battery: 43%	
Est. Days: 0020 Days	
Taken/Capacity: 0021 / 034506	

### Time Lapse

When the camera has been programmed for Time Lapse photography, the camera will observe a full day of activity in the field during Time Lapse mode. The camera will record a block still images following the Time Lapse program setting. The following will be displayed on the Status Screen.

TIME LAPSE MODE	
	30 SEC
Battery: 43%	
Est. Days: 0020 Days	
Taken/Capacity: 0021 / 034506	

### Hybrid Mode

The camera operates in Time Lapse Mode during the programmed intervals and Motion Detect Mode for the remainder of the day.

HYBRID MODE	
	5 MIN
Battery: 43%	
Est. Days: 0020 Days	
Taken/Capacity: 0021 / 034506	

## X MOULTRIE ACCESSORIES

### Using a Tree Mount

The camera can also be mounted directly to a tree using a mounting bracket that attaches directly to a tree or pole. Strap the tree mount to the tree and secure, then attach the camera to the tree mount using the tree mount socket located on the back of the camera.



### Using the Moultrie Camera Power Panel

Place near the tree where the camera is mounted. Place for best exposure to sun. To attach to a tripod secure the power panel to the tripod angled upward for best exposure. Plug the power panel to the Power Panel Plug. This will extend the life of your camera in the field.



**Note:** Leave internal batteries in the camera during use. The Camera Power Panel needs 4 hours of sunlight to fully power the camera.

### Using the Moultrie Battery Box

Extend the field life of your Moultrie camera with a long-lasting, rechargeable external power source. Place near the tree where the camera is mounted. Plug the Battery Box to the Power Panel Plug. This will extend the life of your camera in the field.

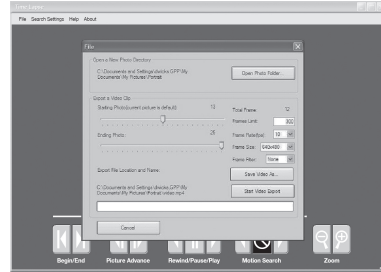


## To turn photo sequences into Time Lapse Video

### Reasons you may want to create a video with your images:

- Makes it easier to e-mail your image sequences.
- Allows you to select the range of images you want included, to eliminate uninteresting images.
- Allows you to store the images as a video rather than a large number of images.

1. Download time lapse images to Time Lapse Software. (see section on downloading images).
2. Click on File. You will see the screen image to the right.
3. Choose a starting image (frame) and an ending image (frame). **Note: The frame limit is 300.**
4. Choose the frame rate. Options include 1, 5, 10, 20, and 30 frames per second (fps).

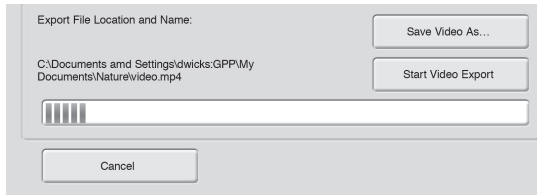


**Note:** The frame rate says how many images of a video are displayed every second a video is played. The higher frame rate a video has the smoother movement appears in the video. However, a higher frame rate video will create a larger file and will require more memory.

5. Choose the video resolution:
    - Note:** The higher the resolution, the sharper the image. However, higher resolutions create a larger file and will require more memory. VGA (640x480) / 720p / 1080p
  6. Choose frame filter: None, Low, Medium, or High.
  7. Click on Save the Video As. Name the video and choose the location file folder you wish to save it in.
  8. Click Start Video Export. The program will start to convert the images to video based on the settings chosen above. The green bars will advance until the conversion is complete.
- Note:** Click on Cancel to abort the transfer.

## To View Time Lapse Video

1. Find the video in the folder you saved it into.
2. Click on the video.
3. The video will be open up automatically in QuickTime player. To install a free version of QuickTime, follow the on screen instructions at [www.apple.com/quicktime/download](http://www.apple.com/quicktime/download).
4. Press play to view your time lapse video.



When the camera's power is turned ON, the LCD screen will show the operation mode of the camera. At this time, the picture count and the estimated battery life will also be displayed. If no buttons are pressed within 10 seconds the LCD screen will enter sleep mode to conserve battery life. It will then enter Motion Detect mode and activate when motion is detected. To wake the camera manually, press and hold the menu button until you see this default screen on the display.

MOTION DETECT MODE	
PHOTO	10 SEC
Battery: 43%	
Est. Days: 0020 Days	
Taken/Capacity: 0021 / 034506	

## Setup Selection Setting

After the camera is turned ON the LCD display will indicate the status screen. Press the **Menu** button and the Setup Selection screen will appear. Press the **OK** button, the selection will be marked with an "X". Press the **Up/Down** buttons to change the settings. Press the **OK** button again to lock in selection. Press the **Right** button to move to the next setting. Using this method you can customize your camera's feature settings.

SETUP SELECTION	
	TIME LAPSE
	MOTION DETECT
X	GENERAL

## Setting Motion Detect Features

When you choose Motion Detect the LCD Display will automatically start showing the different features within Motion Detect. Using the navigation process, set the features to your needs.

## Event Delay Setting

Use the **Up/Down** buttons to choose between delay settings (10 sec, 30 sec, 1 min, 5min, 10min or 30 min). When your selection has been made, press the **OK** button to confirm the selection. Press the **Right** button to move to the next screen.

EVENT DELAY	
	5 MINUTES
	1 MINUTE
	30 SECONDS
X	10 SECONDS

## Setting Photo or Video

Use the **Up/Down** buttons to choose between VIDEO or PHOTO mode. When your selections has been made, press the **OK** button to confirm the selection. Press the **Right** button to move to the next screen.

PHOTO OR VIDEO	
	VIDEO
X	PHOTO

### Setting Photo Quality

Press the **OK** button. Use the **Up/Down** buttons to choose between 4 image quality settings.

1. Enhanced (8 MP): 3840 x 2160
2. High (4 MP): 2688 x 1512
3. Med (2 MP): 1920 x 1080
4. Low (0.9 MP): 1280 x 720

Press the **OK** button to confirm the selection.

Press the **Right** button to move to the next screen.

PHOTO QUALITY	
	ENHANCED (8MP)
	HIGH (4MP)
X	MEDIUM (2MP)
	LOW (0.9MP)

### Video Length

Use the **Up/Down** buttons to choose between 5 video length settings (5, 10, 30, 60 or 90 seconds). When your selection has been made, press the **OK** button to confirm the selection. Press the **Right** button to move to the next screen.

**Note:** With night time video, only 5 and 10 seconds length are available. If you set length higher than 10 seconds, the video will be taken in 10 seconds duration during night time.

VIDEO LENGTH	
	60 SECONDS
	30 SECONDS
X	10 SECONDS
	5 SECONDS

### Audio On/Off

Use the **Up/Down** buttons to choose between Audio On or Audio Off when taking a video. When your selection has been made, press the **OK** button to confirm the selection. Press the **Right** button to move to the next screen.

AUDIO ON/OFF	
	AUDIO ON
X	AUDIO OFF

### Setting Multiple-Shots

Use the **Up/Down** buttons to choose between settings. Choose how many pictures you would like to be taken in a sequence when the camera is triggered (1 to 10 pictures). When your selection has been made, press the **OK** button to confirm the selection. Press the **Right** button to move to the next screen.

MULTI-SHOTS	
	4-SHOTS
	3-SHOTS
	2-SHOTS
X	OFF

### Setting General Features

When you choose General the LCD Display will automatically start showing the different features within General. Using the navigation process, set the features you desire.

### Setting Date and Time

Use the **Up/Down** buttons to move from one value to the next. Press the **OK** button to lock in selections. When all your selections have been made, and the date and time has been set, press the **Right** button to move to the next screen.

DATE/TIME	
	08 / 16 / 2012
	02 : 34 pm

## IX VIEWING TIME LAPSE

This easy-to-use software allows you to advance through the series of images a number of different ways:

### BEGIN/END

Goes to the first or last photo in the Plot File.



### FRAME BY FRAME SEARCH

Individually step forward or backward through each photo.



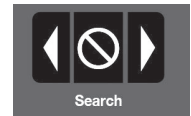
### REWIND/PAUSE/PLAY

Play photos in sequence, pause, or play the photos in reverse order. These functions simulate a video and are useful for manually searching changes in the photos. When a sequence is being played, press fast-forward or fast-rewind multiple times to increase speed. (1x-5x)



### SEARCH

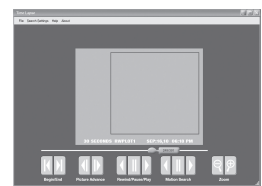
This function allows quick scanning of images foreword and back. The scan pauses when the software detects a change in pixel content from the last photo viewed. We detect change based on averages so it will not be as accurate as a manual frame by frame search.



### SEARCH REGION

Click on Set Search Region Button.

This allows you to define a specific search area, rather than the whole photo. Drag the red outline to the area you want to search. This allows you to focus on a very precise area if required.

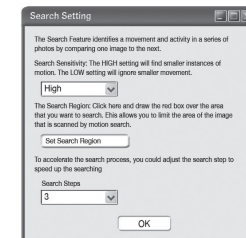


### SEARCH STEPS

This allows for even faster scans by skipping the selected amount of images (1-50). The higher this setting, the lower the search results as it is ignoring selected photos. You may find this option helpful if you have a very large quantity of photos to scan.

Click **OK**.

Click on Motion Search Advance button.



## SOFTWARE INSTALLATION

Download your free Time Lapse software at [www.moultriefeeders.com/timelapsesoftware](http://www.moultriefeeders.com/timelapsesoftware)

## INTRODUCTION

In time-lapse photography a series of still photos are taken at regular time intervals. The PlotStalker Software allows you to load the time lapse file that was captured from your Moultrie Game Camera and scroll backward and forward through your photos, single step, search for activity in a designated area, and save the files.



## SYSTEM REQUIREMENTS

**Computer:** Intel® Pentium® 4 or AMD Athlon® 64 processor or above; 1GB RAM minimum; 100 MB hard disk space minimum.

**Operating System:** Microsoft® Windows® 32 bit - XP with Service Pack 2 or later; Windows Vista® Home Premium, Business, Ultimate, or Enterprise with Service Pack 1; or Windows 7

## Download Images

1. Double-click on Time Lapse Icon to open the software.
2. Click on File -> Open Photo Folder
3. Browse through your files to the folder where the images you wish to view are stored.
4. Once the folder is selected, click OK.
5. The images saved in the folder are now available to view through the Time Lapse Software.



## Erase Images

Use the Up/Down buttons to choose between Yes - erase all images, or No - does not change stored images. When your selection has been made, press the OK button to confirm the selection. Press the Right button to move to the next screen.

**NOTE: This will also format your SD card for use in your camera.**

## Setting Capture Mode

Press the OK button. Use the Up/Down buttons to choose between operating modes. This camera has 3 modes.

1. **Motion Detect** - Capture photo or video when motion or heat is detected.
2. **Time lapse** - Capture photo based on the Time Lapse program setting.
3. **Hybrid** - Uses a combination of Time Lapse and Auto modes at different times of the day. Press the OK button to lock in selection. Press the Right button to move to the next setting.

## Reset to Default settings

You can reset your camera to the factory default settings. Use the Up/Down buttons to choose between Yes - all setups restored to factory default, or No - keep the custom settings. When your selection has been made, press the OK button to confirm the selection. Press the Right button to move to the next screen.

## Setting (IR) Infrared Flash

Use the Up/Down buttons to choose between:  
 AUTO- IR flash will fire depending on light intensity  
 OFF- IR flash is permanently off  
 Press the OK button to confirm the selection.  
 Press the Right button to move to the next screen.

ERASE IMAGES?	
	YES
X	NO

CAPTURE MODE	
X	HYBRID
	TIME LAPSE
	MOTION DETECT

RESET TO DEFAULT?	
	YES
X	NO

IR FLASH	
	OFF
X	AUTO

### Motion Freeze

Use the **Up/Down** buttons to choose between Motion Freeze on or off. This feature maximizes the image clarity during night photos. When this feature is on the camera will use a maximum exposure time of 1/20sec for the night photos. Other adjustments are made to increase the brightness and clarity of the photo. When this feature is turned off the camera will use a maximum exposure time of 1/8sec for the night photos. When your selection has been made, press the **OK** button to confirm the selection. Press the **Right** button to move to the next screen.

MOTION FREEZE	
X	ON
	OFF/EXT.FLASH

**ATTENTION: Use extreme caution when enabling GEOTAGGING within your camera and uploading photographs to the internet. This information could give someone the exact location of your camera.**

Your use of the geotagging features of this camera is at your own risk. Neither Moultrie nor any person associated with Moultrie makes any warranty or representation with respect to security of any data linked to photographs uploaded to the Internet. In no event will Moultrie or its affiliates be liable for damages of any kind arising out of or in connection with your use of the camera, the geotagging feature or any other features associated with this camera.

### Geotagging

Use the **Up/Down** buttons to choose between:

ON - Geotagging data will be stored in the metadata of the JPEG file.  
(Remember to input the geotagging data according to the next two screens.)

OFF - Geotagging data will not be stored.  
Press the **OK** button to confirm the selection.  
Press the **Right** button to move to the next screen.

GEOTAGGING	
	ON
X	OFF

### Latitude

Press the **OK** button. The first position will start blinking. Use the **Up/Down** buttons to set each position. Press **OK** to move to the next position. Repeat the process until all positions are set.

LATITUDE	
N 36° 15' 22"	

### Longitude

Press the **OK** button. The first position will start blinking. Use the **Up/Down** buttons to set each position. Press **OK** to move to the next position. Repeat the process until all positions are set.

LONGITUDE	
W 086° 48' 55"	

## VII VIEWING YOUR IMAGES

There are a number of ways for you download and view the pictures, videos in the field or at another location.

### Removing the SD Card

To remove the SD Memory Card, open the camera cover and push gently on the SD card and it will pop out slightly allowing you to remove it. Load the SD card into the player or card reader to view or move stored images to another location.



### Important

Make sure that the camera is in the OFF position before removing SD card.

### In the Field

You can download the pictures, videos, and time lapse pictures with the aid of external devices. To download, use an external player or card reader that is supported by 12V DC or Mini USB Jack.



### At Home

Remove the entire camera and transport to another location to download images. To connect the camera to a PC computer, turn the camera ON, press the MENU button once to change to SETUP Mode. Connect the USB cord (not included) between the USB out port and the PC computer. The computer will recognize the camera as a removable drive. The unit works with Windows XP/Vista/7. Copy the images and videos from the camera onto your PC for further editing or printing. When the USB cable is disconnected, the camera will go back to SETUP mode.



See the full line of Moultrie camera accessories at [www.moultriefeeders.com](http://www.moultriefeeders.com)



# VI CAMERA SPECIFICATIONS

## Memory & Storage

Your camera supports external SD memory cards ONLY and will accept up to a 32GB card. Using large memory cards can slow the camera response. The camera cannot capture any photo or video without external memory. Please insert an SD memory card to operate camera. Estimates are based on the most common types of memory cards that can be purchased at electronic stores, office supply stores, or online. Estimates may vary based on camera settings or environmental conditions.

### Important

Always turn the unit off when inserting or removing an SD memory card to avoid damage and ensure that the camera properly updates the memory information.

Photo Mode		
SD Card Size:	2 GB	16 GB
ENHANCED 3840 x 2160	400	3700
HIGH 2688 x 1512	900	7400
MED 1920 x 1080	1800	14900
LOW 1280 x 720	4100	33000
Video Mode		
SD Card Size:	2 GB	16 GB
AVI 1280 x 720 (based on 10 sec video)	150	1200

Actual capacity will vary based on image properties.

## Specifications

Operational Mode	Motion Detect / Time Lapse / Hybrid
Resolution	8.0 MP
Still Resolutions	JPEG Low 1280 x 720, Med 1920 x 1080, High 2688 x 1512, Enhanced 3840 x 2160
Video Resolutions	AVI - 1280 x 720
SD Memory Card	Up to 32 GB SD card (not included)
Format	JPEG - Still pictures, AVI - Video clips
Power Supply	6 C-cell Alkaline batteries (not included)

## Imprint Info

Use the **Up/Down** buttons to choose between:

**YES** - Camera Name, Time, etc, information will be imprinted at the bottom of the image/video as an information bar  
**Note:** Remember to input the camera name in the setup and set the clock accordingly.

**NO** - No information bar will be imprinted.

Press the **OK** button to confirm the selection. Press the **Right** button to move to the next screen.

## Temperature

The temperature is imprinted on each photo and can be in degrees Fahrenheit or Celsius. To change the temperature units, press the **Up/Down** buttons to highlight the desired setting. Press the **OK** button to save the setting and return to the Camera Setup Menu.

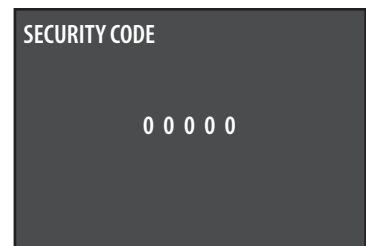
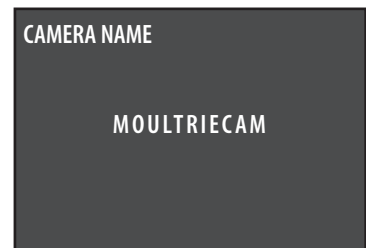
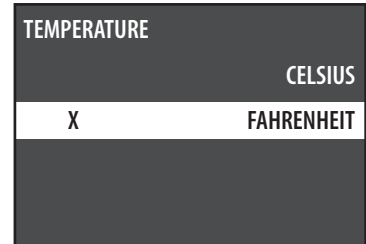
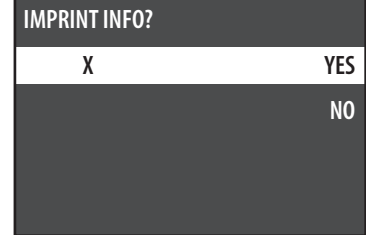
## Setting Camera Name

Press the **OK** button. Use the **Up/Down** and **Left/Right** buttons to select an identity for your camera. For example, you can use a name or a location; the identity you wish to use is up to you. Set all characters and press the **Right** button to go to the next screen.

## Security Code

Use the **Up/Down** and **Left/Right** buttons to select a 5-digit security code for your camera. Press the **OK** button. Press the **Right** button.

**Note:** Please remember your security code. If the code is lost, you can contact Moultrie customer support to reset the password. (Charges may apply)



### Upgrade Firmware

The firmware version is displayed at the bottom of this screen. Press **Up/Down** to choose setting.

YES - To upgrade firmware.  
NO - Keep current firmware.

Make sure that a SD card with the new firmware is inserted into the camera. Press the **OK** button to make selection. Make sure the process is completed before pressing other buttons or powering the camera Off. Press **Right** button to go back to Setup Selection screen.

UPGRADE FIRMWARE	
	YES
X	NO
D555i – 12592	

### Setting Program Wake up

Use the **Up/Down** buttons to choose between 24 different settings: any hour from MIDNIGHT to 11 PM. This will determine what time the camera will wake up during the program and begin its time lapse program. Press the **OK** button to confirm the selection.

PROGRAM 1 WAKEUP	
	8 AM
	7 AM
X	6 AM
	5 AM

### Setting Time Lapse Features

When you choose Time Lapse, the LCD Display will automatically start showing the different features within Time Lapse. Using the navigation process, set the features to your preference.

### Interval Time Setting

Use the **Up/Down** buttons to choose between 10, 30 sec; 1, 5, 10, 15 or 30 minutes / 1, 3, 6 hours or 1 day. Press the **OK** button to confirm the selection. Press the **Right** button to move to the next screen.

TIME LAPSE INTERVAL	
	5 MIN
	1 MIN
X	30 SEC
	10 SEC

### Setting Program Sleep

When wakeup time is set, the camera will automatically move to the Sleep option. Set the sleep time after the wakeup time you already set. This will set the wake up and sleep during the time lapse photography. Press the **OK** button to confirm the selection.

PROGRAM 1 SLEEP	
	11 AM
	10 AM
X	9 AM
	8 AM

**NOTE:** Repeat the above steps for each Program to be set.

### Setting Multi-Program

Use the **Up/Down** buttons to choose between 2 available settings: 1 PROGRAM or 2 PROGRAM. This indicates the number of cycle the camera will operate within a 24 hours period. Press the **OK** button to confirm the selection. Press the **Right** button to move to the next screen.

MULTI-PROGRAM	
X	2 PROGRAM
	1 PROGRAM

### Setting Photo Quality

Use the **Up/Down** buttons to choose between 4 image quality settings:

1. Enhanced (8 MP): 3840 x 2160
2. High (4 MP): 2688 x 1512
3. Med (2 MP): 1920 x 1080
4. Low (0.9 MP): 1280 x 720

Press the **OK** button to confirm the selection.

Press the **Right** button to move to the next screen.

PHOTO QUALITY	
	ENHANCED (8MP)
	HIGH (4MP)
X	MEDIUM (2MP)
	LOW (0.9MP)