



# Premise<sup>®</sup>

## GRANULES

**ACTIVE INGREDIENT:**

Imidacloprid, 1-[(6-Chloro-3-pyridinyl)  
methyl]-N-nitro-2-imidazolidinimine ..... 0.5%

**OTHER INGREDIENTS** ..... 99.5%

**TOTAL:** ..... 100.0%

EPA Reg. No. 432-1385

**STOP - READ THE LABEL  
BEFORE USE  
KEEP OUT OF REACH  
OF CHILDREN  
CAUTION**

See Panel for First Aid Instructions and  
Booklet for Complete Precautionary  
Statements and Directions for Use.

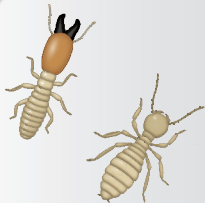
Net Weight

**3.6 Pounds**

**80927452**

**80980000B 190814AV1**

Subterranean Termites



**For Pest Management Professionals and Commercial Use Only**

**To KILL subterranean termite species of *Coptotermes*, *Heterotermes*, *Reticulitermes*, and *Zootermopsis***

**This product will kill workers and/or winged reproductive forms of termites present at the time of application only. Application of this product will not provide structural protection nor substitute for mechanical alteration, soil or foundation treatment with termiticide. This product is not to be used as sole protection against termites, as it is not designed to offer structural protection and will not prevent future infestations. A professional inspection is recommended.**

<b>FIRST AID</b>	
<b>IF SWALLOWED:</b>	<ul style="list-style-type: none"><li>• Call a poison control center or doctor immediately for treatment advice.</li><li>• Have person sip a glass of water if able to swallow.</li><li>• Do not induce vomiting unless told to do so by a poison control center or doctor.</li><li>• Do not give anything by mouth to an unconscious person.</li></ul>
<b>IF ON SKIN OR CLOTHING:</b>	<ul style="list-style-type: none"><li>• Take off contaminated clothing.</li><li>• Rinse skin immediately with plenty of water for 15 to 20 minutes.</li><li>• Call a poison control center or doctor for treatment advice.</li></ul>
<b>IF IN EYES:</b>	<ul style="list-style-type: none"><li>• Hold eye open and rinse slowly and gently with water for 15 to 20 minutes. Remove contact lenses, if present, after the first 5 minutes, then continue rinsing eye.</li><li>• Call a poison control center or doctor for treatment advice.</li></ul>
<b>HOT LINE NUMBER</b>	
Have a product container or label with you when calling a poison control center or doctor, or going for treatment. In case of emergency call toll free the Telephone No.1-800-334-7577.	
<b>NOTE TO PHYSICIAN:</b> No specific antidote is available. Treat the patient symptomatically.	

## **PRECAUTIONARY STATEMENTS**

### **HAZARDS TO HUMANS AND DOMESTIC ANIMALS**

#### **CAUTION**

Harmful if swallowed or absorbed through skin. Causes eye irritation. Avoid contact with skin, eyes, or clothing. Wash thoroughly with soap and water after handling.

#### **ENVIRONMENTAL HAZARDS**

This product is highly toxic to aquatic invertebrates. Do not apply directly to water, or to areas where surface water is present or to intertidal areas below the mean high water mark. Do not contaminate water when disposing of equipment washwaters.

#### **DIRECTIONS FOR USE**

**It is a violation of Federal law to use this product in a manner inconsistent with its labeling.**

#### **GENERAL INFORMATION**

This product is a ready-to-use formulation of imidacloprid intended to kill subterranean termite species of *Coptotermes*, *Heterotermes*, *Reticulitermes*, and *Zootermopsis*.

**This product is formulated on a granulated carrier for perimeter band and/or soil incorporation applications. When applied to soil, precipitation and/or soil moisture cause the active ingredient to release from the granule and establish residues in the top few inches of soil at concentrations that will kill foraging termites which may be present at the time of application.**

Spot treatments with this product can be made in advance of the date when final treatment of the structure with a conventional soil applied termiticide and/or foundation treatment.

#### **USE SITES**

This product can be applied as directed to bare soils, landscaped areas and turfgrass immediately surrounding commercial and residential structures, as well as other wooden constructions subject to termite attack.

Applications should not be made when areas are waterlogged or when the soil is saturated with water. Adequate distribution of the active ingredient into the soil where termites are active cannot be achieved when these conditions exist.

#### **APPLICATION**

**Perimeter Applications:** This product can be used as a perimeter band application 3 to 10 feet wide around and adjacent to the structure foundation in commercial and residential areas. To kill

subterranean termites foraging near commercial and residential structures, apply this product at a rate of 1.8 lb. (29 oz) per 1,000 sq ft. Irrigation of treated areas (not to the point of run-off) will move the active ingredient through the thatch layer in turf, through ground covering and into the underlying soil where termites forage.

Apply this product uniformly over the area being treated with standard granular application equipment; including hand-held spreaders or shaker cans, and wheel-mounted spreaders. Calibrate application equipment prior to use according to the manufacturer's directions. Check frequently to be sure equipment is working properly and distributing granules uniformly and accurately.

**Soil Incorporation:** Use this product to make spot treatments to kill termites in soil which may be present at the time of application.

Incorporate this product in localized areas of soil along the foundation of commercial and residential structures, or in soil adjacent to other threatened wooden constructions. After digging a narrow trench (about 6 inches in width and 6 inches in depth), uniformly incorporate 1/6 lb (3.0 oz) of this product per linear foot of trench. Mix this product thoroughly with the soil when backfilling the trench. Alternately, incorporate at a rate of 1/3 lb. (5.0 oz) of this product per sq. ft. of surface at critical areas such as around plumbing, bath traps, utility services or wells/cisterns, and around poles or posts, fencing and decking materials, landscape timbers and similar non-structural wood-to-soil contacts.

**NOTE:** 1 level cup is approximately 8.5 oz of Premise® Granules.

## RESTRICTIONS

Avoid runoff or puddling of irrigation water following application. Do not plant for the purpose of consumption, edible plants into the treated areas of soil.

Food utensils such as teaspoons and measuring cups should not be used for food purposes after use with this insecticide.

Avoid contamination of public and private water supplies.

Do not apply more than 80 lb of this product (0.4 lb of active ingredient) per acre per year.

## STORAGE AND DISPOSAL

Do not contaminate water, food, or feed by storage or disposal.

**Pesticide Storage:** Store in a cool, dry place and in such a manner as to prevent cross contamination with other pesticides, fertilizers, food, and feed. Store in original container and out of the reach of children, preferably in a locked storage area.

Handle and open container in a manner as to prevent spillage. If material is spilled for any reason or cause, carefully contain any spilled material to prevent non-target contamination. Do not walk through spilled material and dispose of as directed for pesticides below. Refer to Precautionary Statements on label for hazards associated with the handling of this material. In spill or leak incidents, keep unauthorized people away. You may contact the Bayer Environmental Science Emergency Response Team for decontamination procedures or any other assistance that may be necessary. The Bayer Environmental Science Emergency Response Telephone No. is 1-800-334-7577.

**Pesticide Disposal:** Wastes resulting from the use of this product may be disposed of on site or at an approved waste disposal facility.

**Container Disposal: Non-refillable container.** Do not reuse or refill this container. Offer for recycling, if available.

Completely empty container into application equipment. Dispose of empty container in a sanitary landfill, by incineration, or if allowed by the state and local authorities, by burning. If burned, stay out of smoke.

## IMPORTANT: READ BEFORE USE

Read the entire Directions for Use, Conditions, Disclaimer of Warranties and Limitations of Liability before using this product. If terms are not acceptable, return the unopened product container at once.

By using this product, user or buyer accepts the following Conditions, Disclaimer of Warranties and Limitations of Liability.

**CONDITIONS:** The directions for use of this product are believed to be adequate and should be followed carefully. However, because of manner of use and other factors beyond Bayer CropScience LP's control, it is impossible for Bayer CropScience LP to eliminate all risks associated with the use of this product. As a result, crop injury or ineffectiveness is always possible. All such risks shall be assumed by the user or buyer.

**DISCLAIMER OF WARRANTIES:** BAYER CROPSCIENCE LP MAKES NO OTHER WARRANTIES, EXPRESS OR IMPLIED, OF MERCHANTABILITY OR OF FITNESS FOR A PARTICULAR PURPOSE OR OTHERWISE, THAT EXTEND BEYOND THE STATEMENTS MADE ON THIS LABEL. No agent of Bayer

CropScience LP is authorized to make any warranties beyond those contained herein or to modify the warranties contained therein. Bayer CropScience LP disclaims any liability whatsoever for special, incidental or consequential damages resulting from the use or handling of this product.

**LIMITATIONS OF LIABILITY:** THE EXCLUSIVE REMEDY OF THE USER OR BUYER FOR ANY AND ALL LOSSES, INJURIES OR DAMAGES RESULTING FROM THE USE OR HANDLING OF THIS PRODUCT, WHETHER IN CONTRACT, WARRANTY, TORT, NEGLIGENCE, STRICT LIABILITY OR OTHERWISE, SHALL NOT EXCEED THE PURCHASE PRICE PAID, OR AT BAYER CROPSCIENCE LP'S ELECTION, THE REPLACEMENT OF PRODUCT.

Bayer (reg'd), the Bayer Cross (reg'd), and Premise® are registered trademarks of Bayer.

Produced for:  
Bayer Environmental Science  
A Division of Bayer CropScience LP  
5000 CentreGreen Way, Suite 400  
Cary, NC 27513

Bayer



# Premise® GRANULES

**ACTIVE INGREDIENT:**

Imidacloprid, 1-[(6-Chloro-3-pyridinyl)methyl]-N-nitro-2-imidazolidinimine..... 0.5%

**OTHER INGREDIENTS:**..... 99.5%

**TOTAL:**..... 100.00%

EPA Reg. No. 432-1385

**STOP - READ THE LABEL BEFORE USE  
KEEP OUT OF REACH OF CHILDREN  
CAUTION**

See Panel for First Aid Instructions and Booklet for Complete Precautionary Statements and Directions for Use.

**PRECAUTIONARY STATEMENTS****HAZARDS TO HUMANS AND DOMESTIC ANIMALS****CAUTION**

Harmful if swallowed or absorbed through skin. Causes eye irritation. Avoid contact with skin, eyes, or clothing. Wash thoroughly with soap and water after handling.

**ENVIRONMENTAL HAZARDS**

This product is highly toxic to aquatic invertebrates. Do not apply directly to water, or to areas where surface water is present or to intertidal areas below the mean high water mark. Do not contaminate water when disposing of equipment washwaters.

Net Weight

**3.6 Pounds**

**80927452**

80980000B 190814AV1



PULL HERE TO OPEN ▲