



Savate®

Product information sheet

- // Active Ingredient: Spiromesifen 45.2%
- // IRAC Group: 23
- // EPA Registration Number: 432-1280
- // Signal Word: Caution
- // Formulation: Suspension Concentrate
- // REI: 12 hours

Savate® provides excellent knockdown and residual control of all stages of mites and whiteflies.

Best Uses

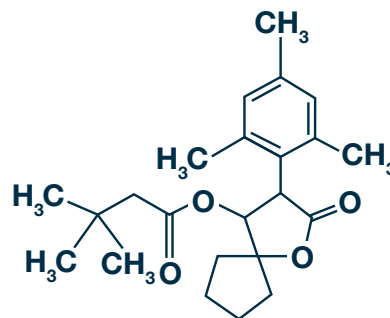
- // Foundational product in a mite control program
- // Rotational chemistry to reduce potential for mite resistance
- // Incorporate into biological programs
- // Long-lasting residual control of mites and whiteflies
- // Use on ornamentals grown in greenhouses and nurseries

Attributes

- // Effective on all life stages of mites and whiteflies, including eggs and immature stages
- // Translaminar movement protects upper and lower leaf surfaces
- // Unique mode of action for resistance management
- // Minimal risk for many beneficial insect species when used as directed
- // Up to 30 days of residual control

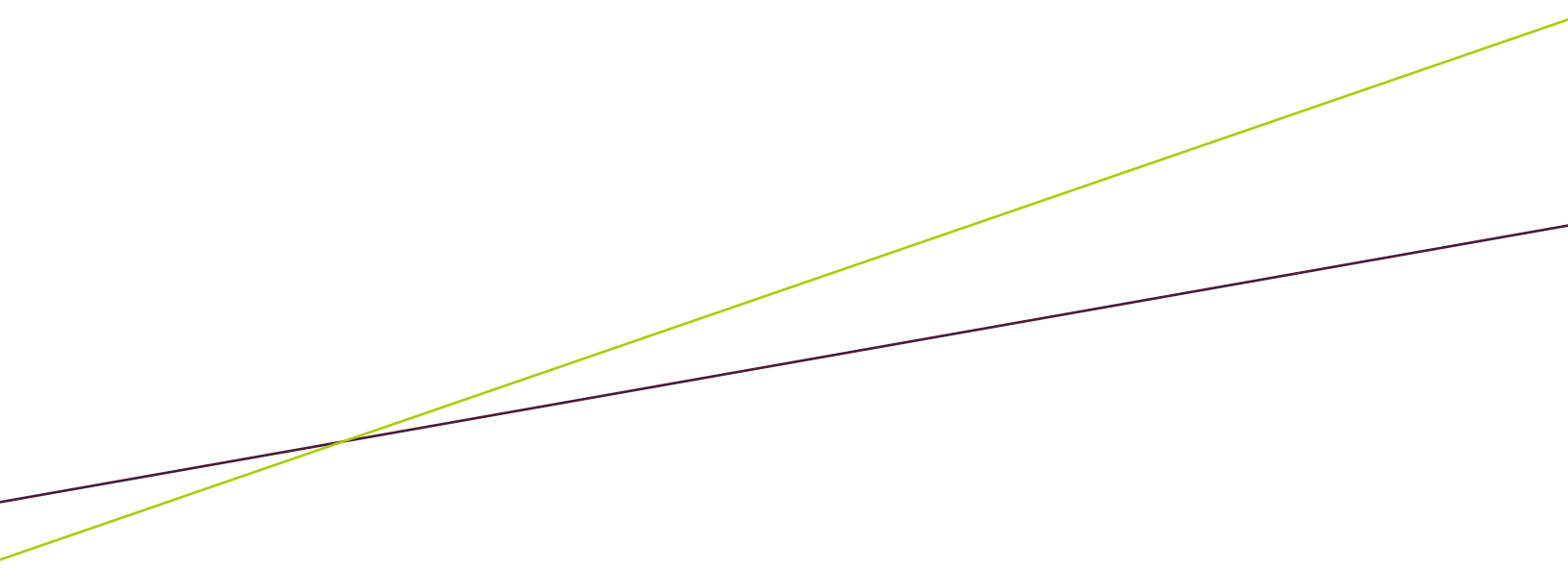
Application Rates

- // Apply at 1-4 fl. oz./100 gal. of water for mites
- // Apply at 2-4 fl. oz./100 gal. of water for whiteflies
- // Savate is available in an 8-oz. bottle



 *Insects Controlled*

Mites Controlled				Whiteflies Controlled
Tetranychid mites	Tarsonemid mites	Tenuipalpid mites	Eriophyid mites	Greenhouse
Twospotted spider mite	Broad mite	False spider mite	Rust mite	Silverleaf
Lewis mite	Cyclamen mite		Blister mite	Sweetpotato
Tumid mite				
Maple spider mite				
Spruce spider mite				
Honeylocust spider mite				
Euonymus spider mite				
Boxwood spider mite				



backedbybayer.com | backedbybayer.com/production-ornamentals



ALWAYS READ AND FOLLOW LABEL INSTRUCTIONS
 Bayer CropScience LP, Environmental Science Division, 2 T.W. Alexander Drive, Research Triangle Park, NC 27709. For additional product information, call toll-free 1-800-331-2867. Not all products are registered in all states. Bayer, the Bayer Cross, and Savate are registered trademarks of Bayer.
 © 2018 Bayer CropScience LP. ES-418-SAV-138-A-R1