

Proven Pythium Disease Control in Turf

WHAT IT IS

University and real world trials show **Segway® Fungicide SC** is highly effective in protecting professionally managed turf areas, and provides outstanding protection against Pythium disease over a period of 7 to 28 days. The active ingredient of Segway, cyazofamid, stops spores from germinating, preventatively inhibiting all stages of Pythium fungal development.

WHAT IT DOES

Segway controls:

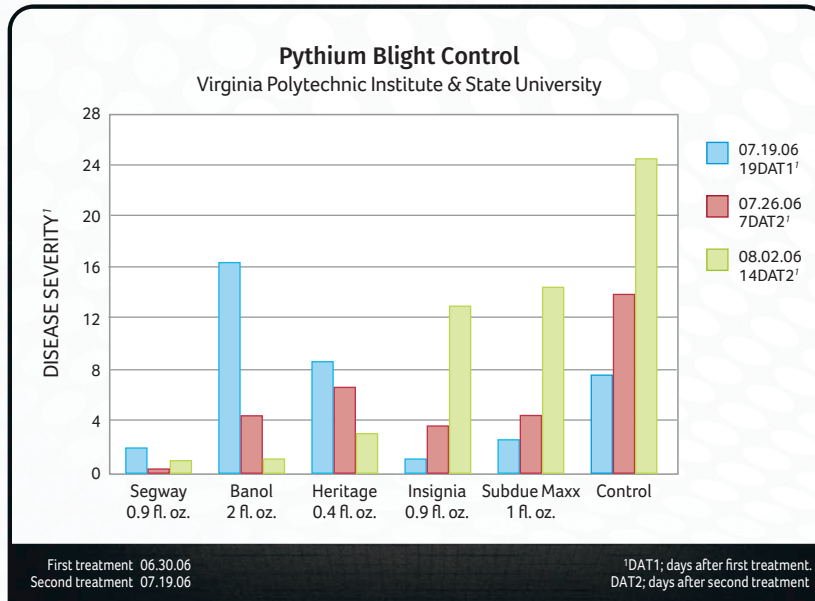
- Pythium root dysfunction
- Pythium blight
- Pythium damping-off
- Pythium Root Rot

Labeled for use in professionally managed turf areas, including:

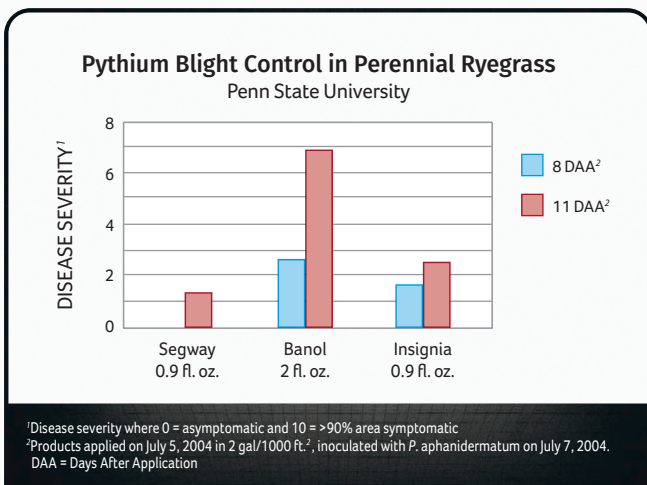
- Golf courses (tees, fairways and greens)
- Sod farms
- Seed farms
- Cemeteries
- Professionally managed sports fields
- Residential lawns by professional applicators



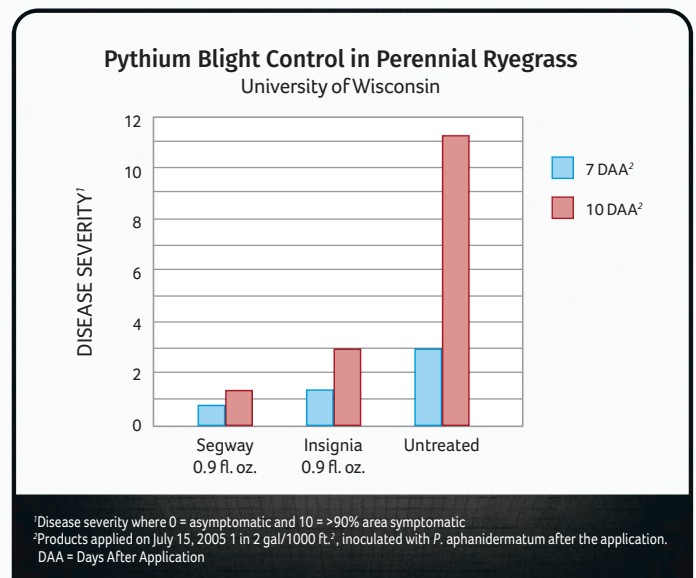
THE PROOF



In this 2006 trial, Segway provided superior control of Pythium blight compared to other products following the second treatment.



In this test, Segway provides 100% control through 8 days and is still highly effective 11 days after application, when applied at a rate of 0.90 fl oz/1000 ft.²



10 days after application, Segway provides excellent control of Pythium blight at a rate of 0.90 fl oz/1000 ft.²

Pythium Blight Control Summary

Treatment	Rate oz./1000 ft. ²	Number of Trials	Average % Control
Segway	0.9 fl. oz.	18	81.9
Banol®	2 fl. oz.	8	56.8
Banol	3 fl. oz.	3	67.5
Insignia®	0.9 oz.	13	70.2
Subdue Maxx®	1 fl. oz.	8	79.7
Aliette®	4 oz.	2	62.4
Signature™	4 oz.	6	47.2

In university trials, Segway applied at 0.9 fl. oz./1,000 ft.² consistently shows excellent performance year after year in a variety of Pythium blight environments.

Product Code 6401216
Size 39.2 ounce
EPA Reg. No. 71512-13-2217

