

Contains indoxacarb, the active ingredient used in Advion® Cockroach Gel Bait.

## INSECTICIDE

# SAVITRI™

## 7//COCKROACH

### GEL BAIT

## ELIMINATE COCKROACHES WITH EASE

Savitri™ Cockroach Gel Bait contains indoxacarb, a non-repellent active ingredient in a ready-to-use syringe to control cockroaches. This slow-acting insecticide combined with an attractive gel lures roaches into thinking the gel is food and then consuming the insecticide within. Savitri Cockroach Gel Bait begins controlling within 24 hours, allowing the pest to carry the bait back to their harborage site and contaminate the others.

Use Savitri Cockroach Gel Bait as a spot or crack and crevice treatment for cockroaches' indoor and outdoor control. The formula controls various American, Australian, Asian, brown, German, and smoky-brown species. Get rid of cockroaches quickly, effectively, and for a long time with Savitri Cockroach Gel Bait.

### KEY BENEFITS

- Non-repellent, high-performing formulation
- EPA approved for both indoor and outdoor use
- Easy to apply, ready-to-use packaging
- Low concentration rates and long-lasting results

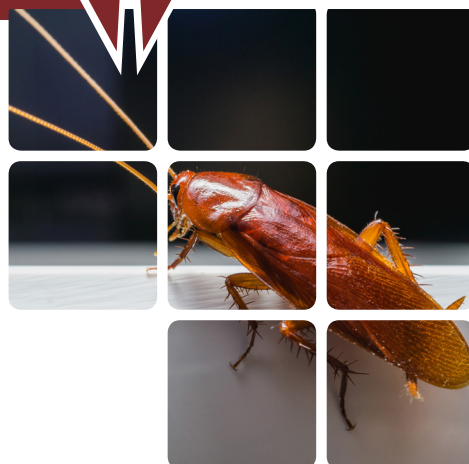
### KEY USES

Indoor & Outdoor:

- Commercial sites
- Industrial sites
- Residential sites

Refer to label for specific use restrictions.

# EcoCore



### PRODUCT NOTES

#### EPA REGISTRATION NUMBER

91234-260

#### ACTIVE INGREDIENT

Indoxacarb 0.6%

#### FORMULATION

Gel

#### IRAC NUMBER

22A

#### SIGNAL WORD

Caution

#### PACKAGE SIZE

24 x 4 x 30 gram

24 x 1 x 1.06 oz (30 gram)

#### RESTRICTED USE

No



Relevant. Simple. Reliable.

## APPLICATION DIRECTIONS

Apply Savitri Cockroach Gel Bait to areas frequented by cockroaches such as between different elements of construction, between equipment and floors, openings leading into voids and hollow spaces in floors, walls, ceilings, equipment legs and bases, around plumbing pipes, doors and windows, and behind and under appliances, cabinets, sinks, closets, and any other equipment that cockroaches are typically known to hide.

TREATMENT RATES FOR ALL USES		
COCKROACH INFESTATION LEVEL	TREATMENT RATE (PER 10 LINEAR FEET)	SPECIAL INSTRUCTIONS
Heavy	3 to 5 Spots	Each spot of Savitri Cockroach Gel Bait must equal about 0.5 grams (approximately 1/4" diameter).
Light to Moderate	1 to 3 Spots	When a bead of Savitri Cockroach Gel Bait is used, apply a small thin bead that is less than 1/8" wide and approximately 2" long.

## INDOOR USE

Infested areas must be carefully inspected to determine overall infestation levels, locations of harborage areas, and most appropriate application points. Apply Savitri Cockroach Gel Bait as a small spot of material, approximately 0.5 grams (approximately 1/4" in diameter), to areas not able to be contacted by children or pets. Several small applications distributed within an area are more effective than 1 or 2 applications of large quantities. In some cases, a small thin bead (less than 1/8" wide and 2" long) may be appropriate, such as between construction elements or other cracks and crevices. Indoor applications include cracks and crevices along walls or floors, behind or under equipment, under tables, within framing of tables or furniture, around sinks, within or near garbage collection areas, attics, crawl spaces, and cracks and crevices in cabinets. Inspect Savitri Cockroach Gel Bait placements periodically for consumption or attractiveness and reapply as needed.

## FOOD/FEED HANDLING AREAS

Apply in food/feed areas of food handling establishments as a crack and crevice treatment only. Apply Savitri Cockroach Gel Bait directly into cracks and crevices by placing the bait dispenser tip approximately 1/2" into cracks, crevices, holes and similar openings where cockroaches are found or are entering.

## OUTDOOR USE

A thorough inspection around a structure may reveal areas where cockroaches are gaining access. Attempts should be made to remove the access. Apply Savitri Cockroach Gel Bait as a spot or thin bead to pest entry sites such as along windows, doors, between construction elements, sewer areas, adjacent trees which harbor cockroaches, along walls, garbage holding areas, or suitable placement site acting as a cockroach harborage. Place baits in such a way as to reduce the potential for subsequent human contact. Inspect Savitri Cockroach Gel Bait placements periodically and apply fresh bait as needed.

*Refer to product label for complete application and mixing instructions.*

©2023 Atticus. Important: Always read and follow label instructions. Not all products are registered for use in every state. Savitri™ Cockroach Gel Bait is not manufactured, or distributed by Syngenta Professional Products, seller of Advion® Cockroach Gel Bait. Advion® Cockroach Gel Bait is a registered trademark of a Syngenta Group Company. Savitri™ is a trademark of Atticus, LLC.

## KEY INSECTS

Cockroach species such as;

American  
Asian  
Australian  
Brown  
Brown-banded  
German  
Oriental  
Smoky-brown

*(Refer to product label for complete list)*