

Mosquito Repellent



Ask for
these other great
ThermaCELL®
products

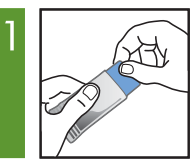


Provides a 15 ft x 15 ft area of repellancy

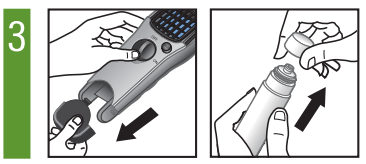


- Easy to use. Insert repellent mat and butane cartridge. Turn ON and press START
- Heated mat releases repellent into the air
- Repels mosquitoes, black flies and other flying insects
- Provides 15 x 15 ft of repellency, the size of an average deck or outdoor campsite

DIRECTIONS FOR USE It is a violation of Federal law to use this product in a manner inconsistent with its labeling.



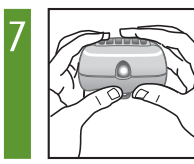
1 Remove one ThermaCELL® Mosquito Repellent mat from wrapper. One mat lasts a maximum of 4 hours. Mat turns from pale blue to white when active ingredient has been exhausted.



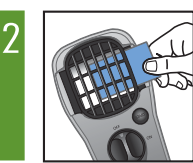
3 Remove the appliance cover and butane cartridge cap.



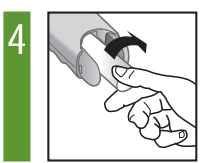
5 Turn the 'ON/OFF' switch to the 'ON' position; the butane gas will begin to flow.



7 To verify the appliance is operating, pick it up and check the lens on the end of the appliance. The light at the end of the appliance glows when the appliance is heating. If the light is not glowing, check to make sure the appliance is 'ON' and cartridge is completely screwed into place; then once again depress the 'START' button three to five times in rapid succession. Check to make sure the light is glowing.



2 Make sure the 'ON/OFF' switch on the appliance is in the 'OFF' position. Insert the mat under the appliance's black grill. To change mats, turn the 'ON/OFF' switch to 'OFF' and allow the appliance to cool completely. Push the used mat out by inserting a fresh one.



4 Screw the cartridge into the opening of the appliance. Make sure the cartridge is fully inserted by turning it clockwise until it stops. Replace the appliance cover. One ThermaCELL® butane cartridge lasts a maximum of 12 hours. If your appliance fails to heat, it may be out of fuel. Check the fuel level by holding the appliance vertically and looking at the fuel gauge on the bottom. You can see the amount of butane in the cartridge. Replace if empty.



6 Wait approximately 5 to 10 seconds then depress the 'START' button three to five times in rapid succession.



8 Do not touch the grill; it will be hot after a couple of minutes. Some visible vapor will appear during use; this is normal. When finished using the appliance, turn the 'ON/OFF' switch to the 'OFF' position, and allow the appliance to cool completely. Appliance is now ready for storage.

Allow 10 to 30 minutes, depending upon the size of the area, for product to take effect. This product works well in outdoor areas where there is minimal air movement, such as decks, unenclosed porches, patios and yards. Use one appliance per each 225 square feet (an area 15' x 15') or 15 feet in diameter. **Use Restrictions:** Only for outdoor use as an insect repellent. Do not use indoors, in tents or in any enclosed area. Do not insert anything other than ThermaCELL® mats into the appliance. Cover or remove all exposed food. Do not leave appliance unattended or use in windy conditions. Do not expose appliance or mats to rain. Do not attach appliance to your body or clothing. Place appliance on a flat, stable surface with the grill facing upward. Clean with a damp cloth only when the appliance is cool and inactive. Butane cartridges other than ThermaCELL® cartridges will not work in this appliance.