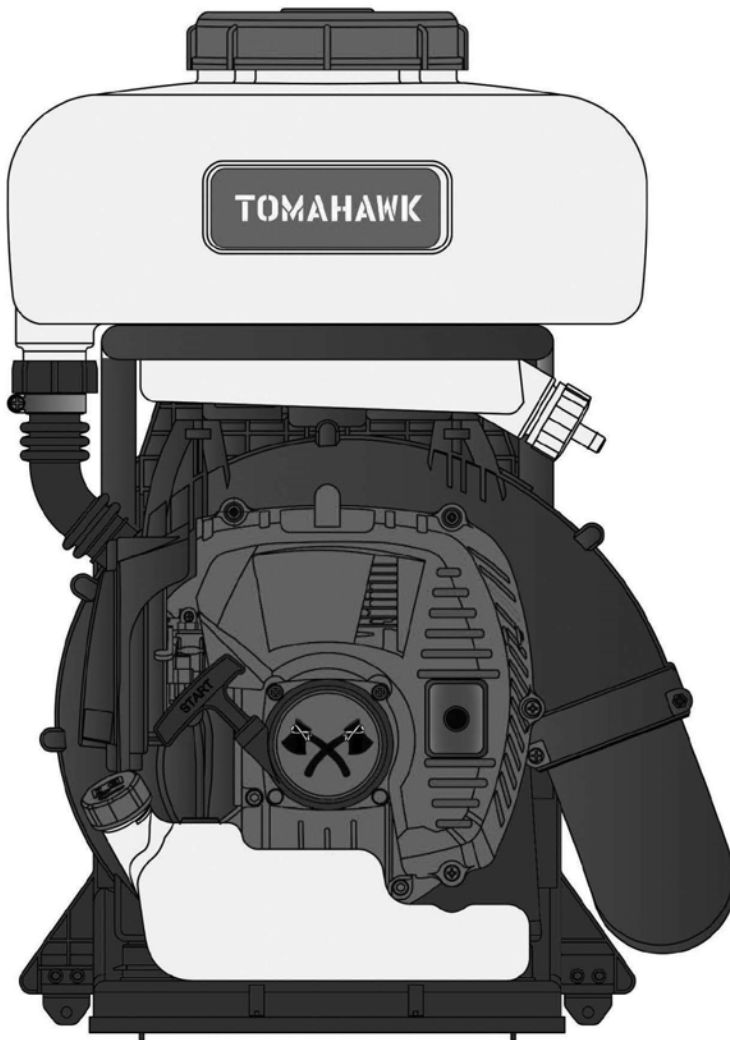


# TOMAHAWK

## TMD14 BACKPACK FOGGER

## Operations Manual



FIND OUR ASSEMBLY GUIDE ON

# You Tube

- 1** Go to [www.youtube.com](http://www.youtube.com)
- 2** Type in the Search Bar  
*Assemble Tomahawk TMD14*
- 3** Choose the Video Titled  
*HOW TO: Assemble TMD14 Backpack Fogger*

### **WARNING**

WHEN STARTING THE ENGINE, USE WATER-BASED OR WATERBORNE COMPOUNDS ONLY.

RUNNING THIS MACHINE WITHOUT WATER-BASED COMPOUNDS IN THE TANK WILL BREAK THE PUMP AND VOID THE WARRANTY

READ OWNER'S MANUAL BEFORE OPERATION

**ATTENTION:** USE ONLY 50:1 PREMIX 2 STROKE ENGINE FUEL OR  
A 50:1 COMBINATION OF 91 OCTANE GASOLINE AND 2 STROKE ENGINE OIL

# Register Your Equipment

Thank you for purchasing TOMAHAWK equipment! Your product is covered by the TOMAHAWK Warranty Policy, but in order to activate your warranty, we need you to register your product. In addition to activating your equipment warranty, product registration will grant you access to important product updates, streamlined customer service, and more.

## INCLUDED WITH YOUR REGISTRATION

- ✓ Equipment Warranty Activation
- ✓ Product Updates
- ✓ Streamlined Customer Service
- ✓ Exclusive Discounts and Sales

## STEPS TO REGISTER YOUR EQUIPMENT

1. Visit [www.tomahawk-power.com](http://www.tomahawk-power.com)
2. Choose “Product Registration” at the bottom of the page
3. Enter your equipment’s serial number to get started
4. Provide all required information
5. Submit Registration

---

# Equipment Resources

Tomahawk Customer Service doesn’t stop at checkout. We understand to keep a job-site running smoothly - the proper equipment, spare parts, instruction manuals, and more are needed at the drop of a hat. Visit [www.tomahawk-power.com](http://www.tomahawk-power.com) to gain access to the incredible resources below.

## How To Video Library

More of a visual person? Visit our Video Library for equipment assembly instructions, troubleshooting tips, and more!

**Found on each product listing or the Service Videos Page**

## Manual and Assembly Guide Library

Visit our Manual Library if you are looking for a lost operations manual or a particular spare part?

**Found on each product listing or the Tomahawk Manuals Page**

## Service Requests

In need of a quick fix or a service center referral? Submit a Service Request and a Tomahawk Technician will respond shortly to get you the help you need.

**Choose “Service Request” at the bottom of [www.tomahawk-power.com](http://www.tomahawk-power.com)**



# TOMAHAWK

TMD14: Package Contents

[www.tomahawk-power.com](http://www.tomahawk-power.com)



## OPTIONAL



## OPTIONAL



## TMD14 BACKPACK FOGGER

- A. RIBBED TUBE
- B. CONNECTING PIPE
- C. BLOWER PIPE
- D. FAN NOZZLE

## ADDITIONAL PARTS

- 2 CLEAR TUBES
- 2 HOSE CLAMPS
- 1 DUSTER TANK
- 1 DUSTER TUBE



# TOMAHAWK

## TMD14: Fogger Assembly Pt1

[www.tomahawk-power.com](http://www.tomahawk-power.com)



**1** Remove all parts from your mistblower box, including the tool kit bag



**2** Fasten the ribbed tube (A) to the blower elbow



**3** Secure the ribbed tube with a hose clamp to the blower elbow



**4** Attach the connecting pipe (B) and secure it to the ribbed tube with a hose clamp



**5** Attach the blower pipe (C) by meeting the raised dimple to the slot guide



**6** Twist to lock in place



# TOMAHAWK

## TMD14: Fogger Assembly Pt2

[www.tomahawk-power.com](http://www.tomahawk-power.com)



**7** Attach the fan nozzle (D) to the end of the blower pipe



**8** Slip the throttle handle over the connecting pipe (B) and tighten with the tool kit's screw



**9** Attach the 1st clear tube to the base of the chemical tank



**10** Secure clear tube's other end to the back of the throttle and the 2nd tube to the front



**11** Wrap the 2nd tube around the blower pipe (C) and attach its end to the fan nozzle (D)



**12** To begin fogging, add 50:1 Pre Mix Fuel (fuel not included)

## **SAFETY PRECAUTIONS AND WARNINGS**

### **Operator Precautions**

1. This product emits carbon monoxide, an invisible and odorless toxin. Do not run this product indoors at any time.
2. Always turn engine off before adding fuel to the tank.
3. To avoid electrocution, do not touch the cap of the spark plug or wiring while the engine is on.
4. Do not touch the surface of the muffler and the cylinder while the engine is running. It is extremely hot.

### **Equipment Warnings**

1. The TMD14's 2 stroke engine runs on 50:1 fuel mix. Use 91 octane gas and two-cycle engine oil. Note: 50:1 pre-mix fuel is ideal for this product as it contains fuel stabilizers to ensure longevity of the equipment.
2. After starting the engine, keep the throttle at a low speed for several minutes before running at full throttle.
3. Gasoline is an extremely flammable fuel. When operating, keep away from any flames. Do not smoke while operating.
4. Do not spray in the direction of others.

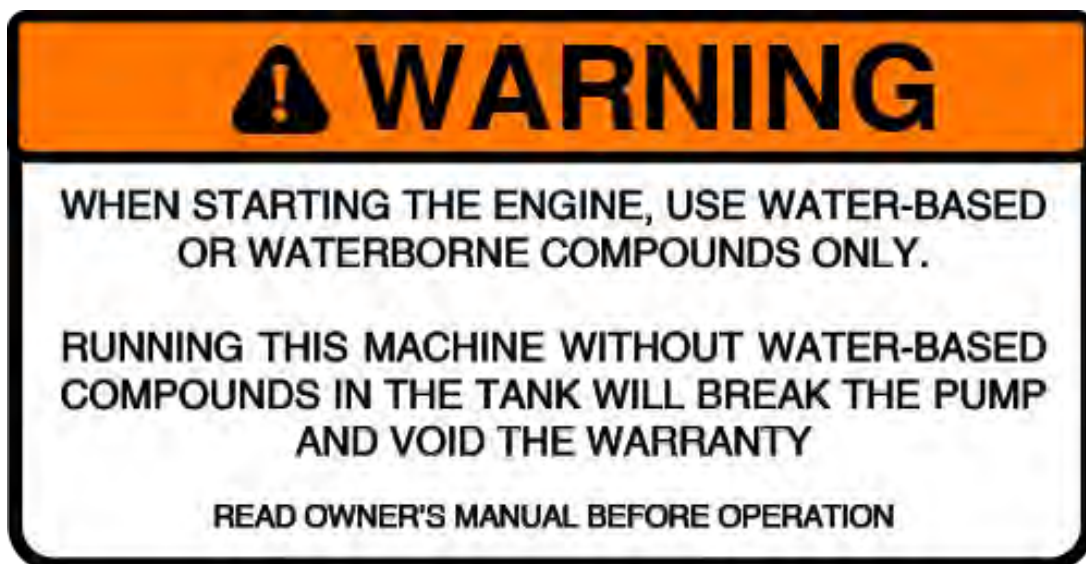
### **Chemical Handling**

1. Wear ear protection.
2. Wear eye protection.
3. Use a mask to protect mouth and face against dust and pesticides.
4. Wear closed-toed protective shoes.
5. Wear gloves to avoid contact with pesticides.
6. Wear proper clothing to protect arms and legs to avoid contact with pesticides.
7. After spraying, wash hands and clothing immediately.

## FUELING

- This engine is certified to operate on unleaded gasoline and two-stroke engine oil at a mix ratio of 50:1.
- This engine requires a mixture of high-quality gasoline and 2-stroke air cooled engine oil.
- Use mid-grade unleaded gasoline with a minimum octane rating of 91 and no more than 10% ethanol content.
- Keep the fuel tank far away from flames or sparks. Do not smoke near fuel.
- When adding pre-mixed fuel to the engine, use a funnel to avoid spillage.
- When the machine is running, do not add more to the fuel tank.
- Open the fuel cap carefully to allow any pressure build-up in the tank to release slowly and avoid fuel spillage.
- At the end of a season, drain all fuel from gas tank and use fuel stabilizer to ensure a clear carburetor for your next season.

**ATTENTION: USE ONLY 50:1 PREMIX 2 STROKE ENGINE FUEL OR A 50:1 COMBINATION OF 91 OCTANE GASOLINE AND 2 STROKE ENGINE OIL**





# TOMAHAWK

www.tomahawk-power.com

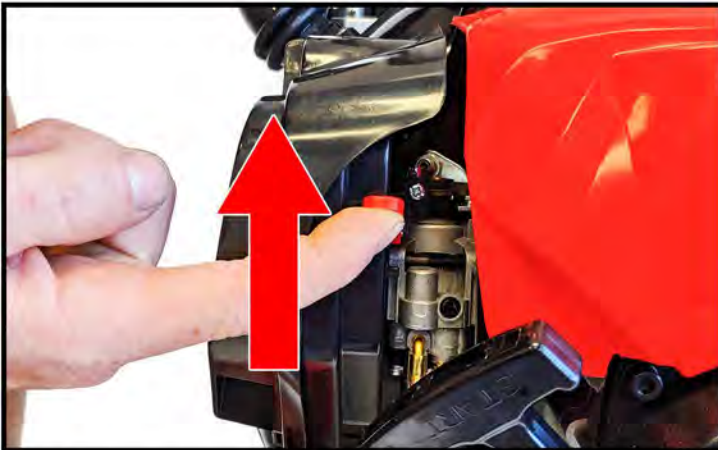
## TMD14: Start Up Guide



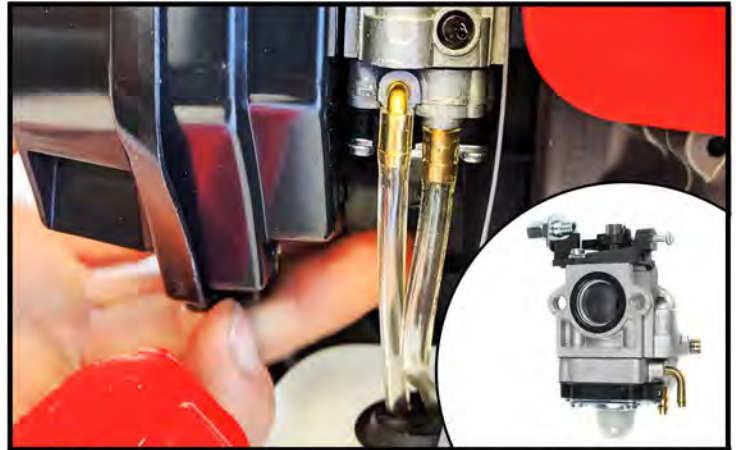
- 1** Fill the fuel tank with a 2 Stroke 50:1 Pre Mix Fuel for the optimal engine efficiency



- 2** Move the throttle handle to the On Position labeled "I"



- 3** Move the choke to the up position



- 4** To prime the engine, press the carburetor bulb 4-5 times or until fuel runs through the lines



- 5** Pull the recoil starter cord until the engine turns over and starts



- 6** Once the engine fires up, slowly move the choke to the down position

**IMPORTANT:** Before spraying with chemicals, fill the tank with water to make sure the fogger is operating correctly



## STOPPING YOUR ENGINE

1. Move the water valve to the closed position to stop the flow of liquid pesticide. Figure 1.
2. Move the throttle lever to the down position (O) to stop the engine. Figure 2.
3. Move the choke to the closed position. Figure 3.

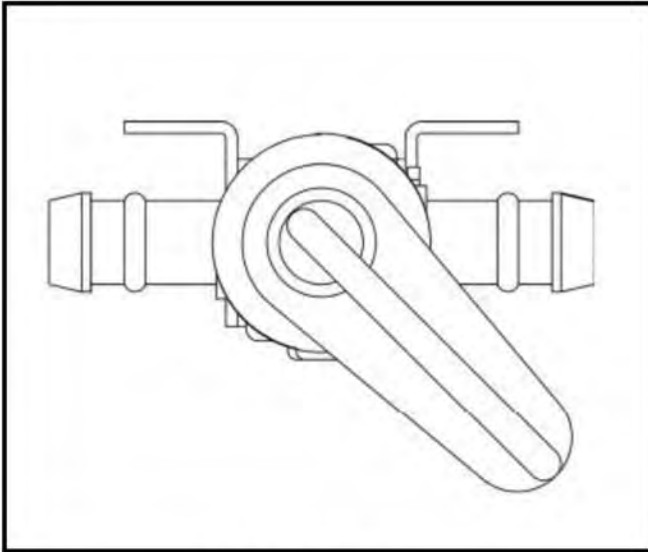


FIGURE 1

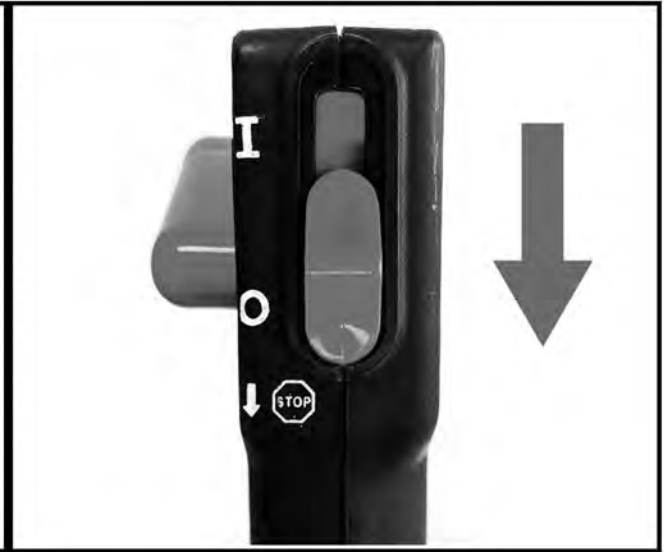


FIGURE 2

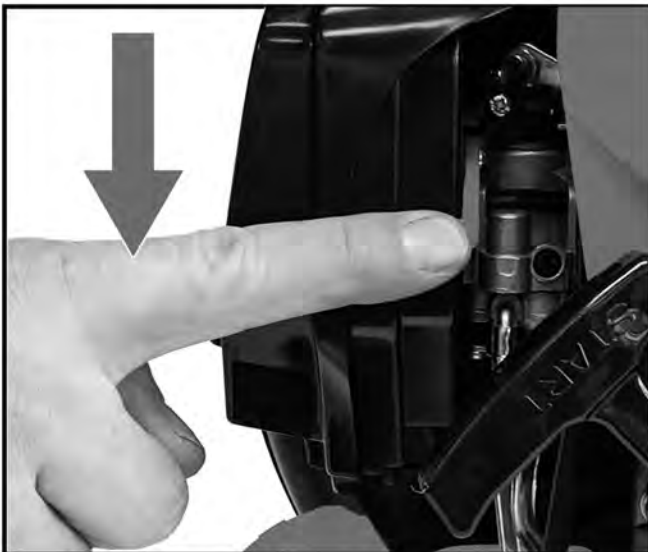


FIGURE 3



FIGURE 4

## ADDING CHEMICALS AND ADJUSTING OPTIONS

### Adding Chemicals

Warning- Some chemicals sprayed with the mist blower can contain toxic substances which can lead to serious side effects and injury.

1. Avoid direct contact with chemicals and always follow the instructions of the chemical manufacturer. Always wear the proper clothing and chemical protection
2. It's important to dilute your chemicals according to the chemical manufacturer's specifications. Never spray undiluted chemicals.
3. Dilute and prepare your chemicals prior to turning on your mist blower.
4. Prepare your chemical and pour into the mist blower water tank outdoors or in a well ventilated area.
5. After spraying, do not keep the spray solution in the tank. Properly dispose of the excess spray solution and rinse your machine after each use.

### Adjusting Options

1. **Water Flow-** To adjust water flow use the water valve to increase the flow of water from the tank. See Figure 1.
2. **Water Speed-** To adjust the speed of water use the accelerator to increase the engine's speed. See Figure 4.
3. **Dust Flow-** To adjust dust flow move lever to the left. Move the lever to the right to reduce dust flow. See Figure 5.
4. **Spray Pattern-** To adjust spray pattern use the knob on the horn nozzle. 1 being the least amount of flow and 4 being the most. See Figure 6.

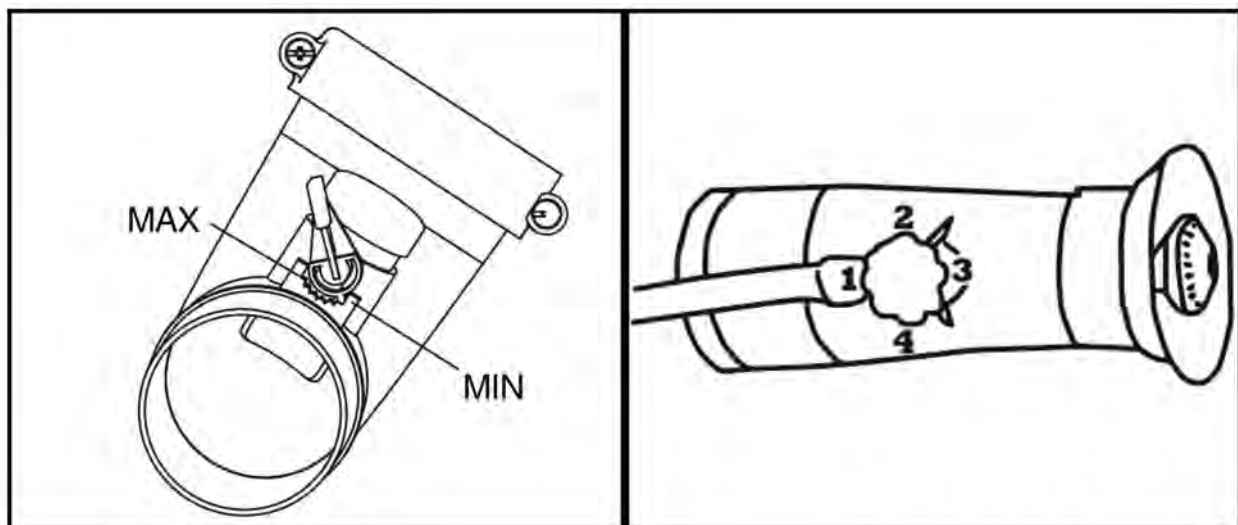


FIGURE 5

FIGURE 6

## TECHNICAL SPECIFICATIONS

<b>Dimensions</b>	18" x 12" x 26"
<b>Net Weight</b>	24 lbs
<b>Tank Capacity</b>	3.7 Gallons (14 Liters)
<b>Engine Size</b>	63cc
<b>Engine Speed</b>	6500RPM
<b>Engine Power</b>	1.5kW
<b>Blower Speed</b>	475 CFM (up to 200mph)
<b>Fuel Type</b>	Recommended 50:1 Premix Fuel  OR  <b>2 Stroke Oil with 91 Octane Gasoline</b>
<b>Spraying Options</b>	Dust or Liquid
<b>Vertical Reach</b>	10 ft Max
<b>Horizontal Reach</b>	Up to 25ft

## FEATURES & USE

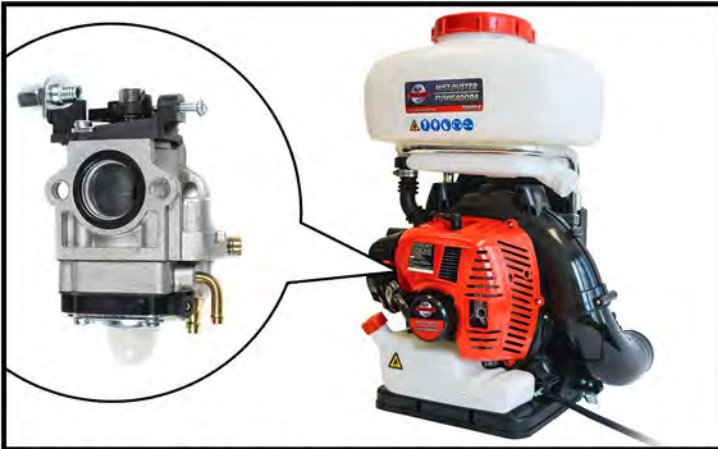
<b>Features</b>	<b>Target Pests</b>	<b>For Use Around</b>
<ul style="list-style-type: none"> <li>• Spray 1 acre in less than 30 minutes</li> <li>• 4X faster than Pump Sprayers</li> <li>• Vertical Range of 25 ft</li> <li>• Horizontal Range up to 40ft</li> </ul>	<ul style="list-style-type: none"> <li>• Mosquitoes &amp; Ticks</li> <li>• Ants &amp; Cockroaches</li> <li>• Caterpillars and Worms</li> <li>• Fleas</li> <li>• Biting Flies &amp; Horse Flies</li> <li>• Scorpions &amp; Wasps</li> <li>• Spider Mites</li> <li>• Thrips</li> <li>• Stink Bugs &amp; Beetles</li> <li>• And More</li> </ul>	<ul style="list-style-type: none"> <li>• Commercial &amp; Residential</li> <li>• Farms &amp; Barns</li> <li>• Dairies &amp; Kennels</li> <li>• Livestock</li> <li>• Ornamental Plants</li> <li>• Orchards</li> <li>• Vegetable Gardens</li> <li>• Parks &amp; Recreation Areas</li> <li>• Golf Courses</li> <li>• And More</li> </ul>



# TOMAHAWK

## TMD14: Carburetor Adjustment Guide

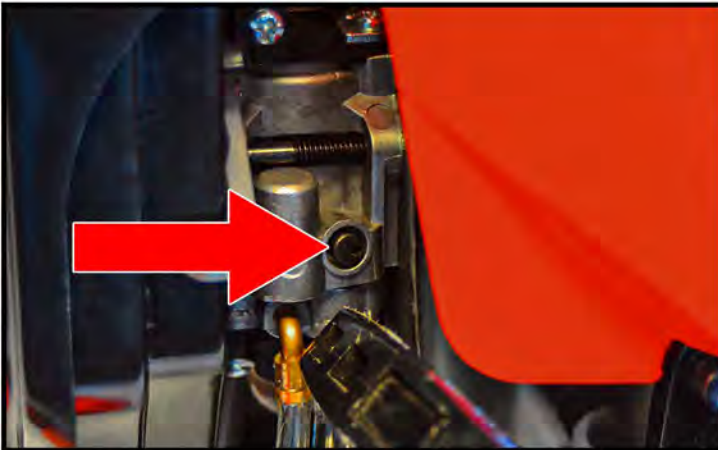
[www.tomahawk-power.com](http://www.tomahawk-power.com)



**1** If your fogger engine is bogging down or only runs with the choke open, follow these steps



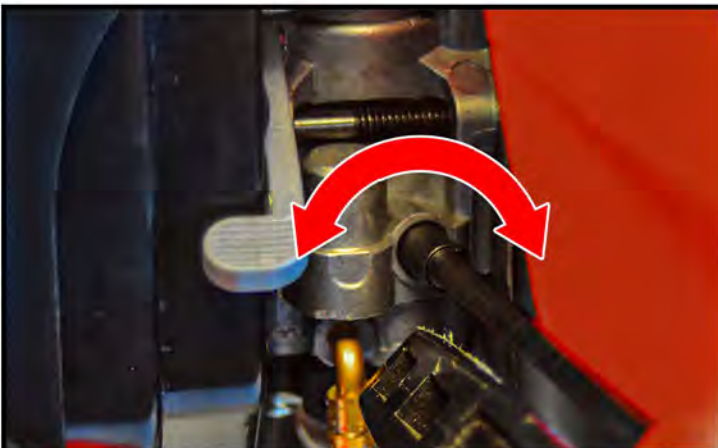
**2** Identify the engine's carburetor in between the engine cover and air filter



**3** Tune up your carburetor by adjusting the keyhole (pictured above)



**4** Use a carburetor adjustment tool\* to tune the engine's carburetor while the engine is running



**5** Turn the tool to the left or right until the engine is running correctly\*\*



**6** Use the fogger's throttle handle to listen for a high pitch, steady hum & find the right speed

\* The carburetor tool changes the ratio of air and fuel let into the engine. A ratio too high will bog down the engine or too low will choke the engine.

\*\* The engine's carburetor is very sensitive to adjustments. Only make turns in 25° increments (1/4 turns) until the ideal adjustment is achieved.



# TOMAHAWK

## TMD14: Leaking Tank Quick Fix

[www.tomahawk-power.com](http://www.tomahawk-power.com)



**1** If your fogger tank is leaking excessively, follow these steps



**2** Remove the cap from the top of the fogger's chemical tank



**3** Leaking may be caused by the tubing attached to the strainer



**4** If the tubing is loose or disconnected from the base of the tank, reattach the tube



**5** Fit the tube tightly around the nozzle at the base of your fogger's chemical tank



**6** Dry off your fogger thoroughly and fill the chemical tank with water to monitor leakage\*

\* If the tank continues to leak, reach out to Tomahawk Power at [www.tomahawk-power.com/service](http://www.tomahawk-power.com/service) or email [sales@tomahawk-power.com](mailto:sales@tomahawk-power.com)

## MAINTENANCE & TROUBLESHOOTING

### Maintenance

Before fixing your equipment, make sure the engine is turned off and completely cooled down.

#### Spark Plug:

PROBLEM		CAUSE	SOLUTION
No Spark	Spark Plug	1. Spark plug is wet	Dry Spark Plug
		2. Spark plug is dirty	Clean
		3. The insulation is damaged	Replace
		4. Spark gap is off	Adjust
	Ignition coil	1. Wrap of wire damaged	Fix or Replace
		2. Insulation of coil bad	Replace
		3. The wire of coil broken	Replace
Normal Spark	Good Compression ratio	1. Too much fuel in the cylinder	Drain
		2. Water or dirt in the fuel	Replace
	Poor Compression Ratio	1. Cylinder and piston ring worn or torn	Replace
		2. The plug is loose	Tighten
	Carburetor Not Fueling	1. No fuel in the tank	Add Fuel
		2. Filter gauge is clogged	Clean
		3. Fuel tank has a hole	Clean

#### Engine Lacks Power:

PROBLEM	CAUSE	SOLUTION
Good Compression Ratio	1. Filter is clogged	Clean
	2. Air passes through the connection of carburetor	Tighten
	3. Engine overheats	Stop Engine. Let Cool.
	4. Water in the fuel	Replace Fuel
	5. Dirt clogs the muffler	Clean
Engine Overheats	1. Gas is thin in fuel mix	Replace Fuel
	2. Cylinder is dirty	Clean
	3. Oil is bad	Replace Fuel with New 50:1 Pre Mix Fuel
	4. No connection with hose	Adjust hose connection
Engine is noisy or knocking	1. Fuel bad Replace fuel	Replace Fuel
	2. Dirt in cylinder	Clean
	3. Parts are worn	Fix or Replace



Engine stops while running:

PROBLEM	CAUSE	SOLUTION
Engine stops suddenly	1. Wire of plug is loose	Replace
	2. Piston is broken	Fix or Replace
	3. Plug is dirty	Clean
	4. Fuel is empty	Add Fuel
The engine stops slowly	1. Carburetor is dirty	Clean
	2. Hoses to tank are clogged	Clean
	3. Water in the fuel	Replace Fuel

Engine is difficult to stop:

PROBLEM	CAUSE	SOLUTION
The engine still runs with the throttle at its lowest position	1. The throttle cord has short circuited or carburetor piston is blocked.	Fix or Replace Cord

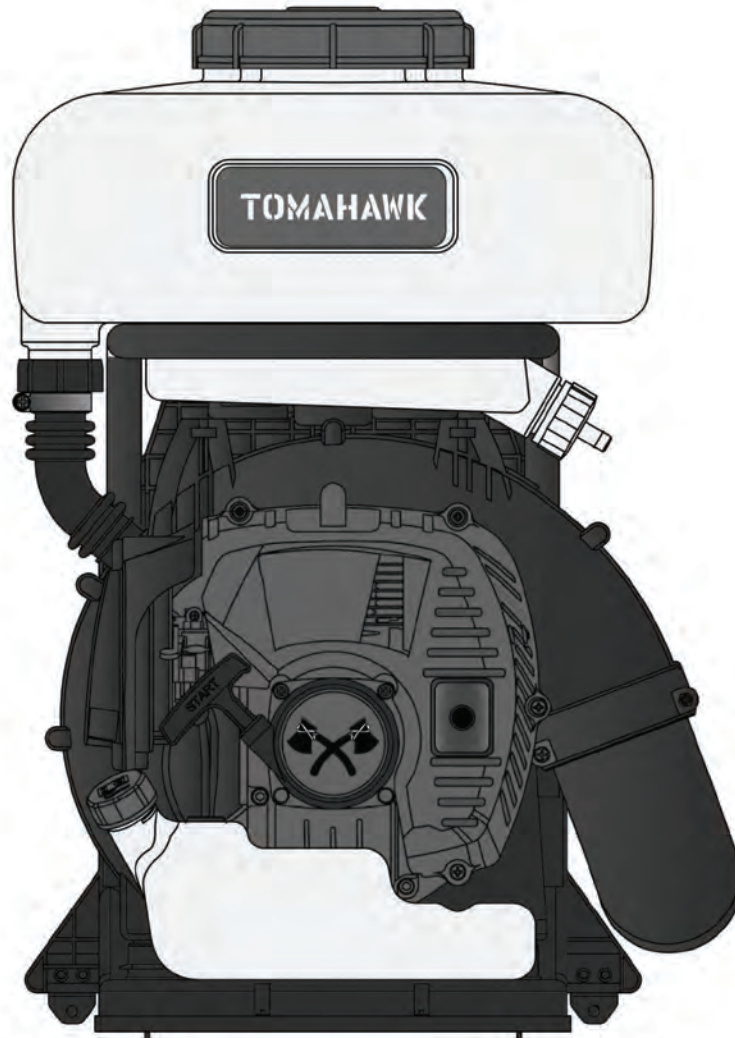
Difficulties dusting:

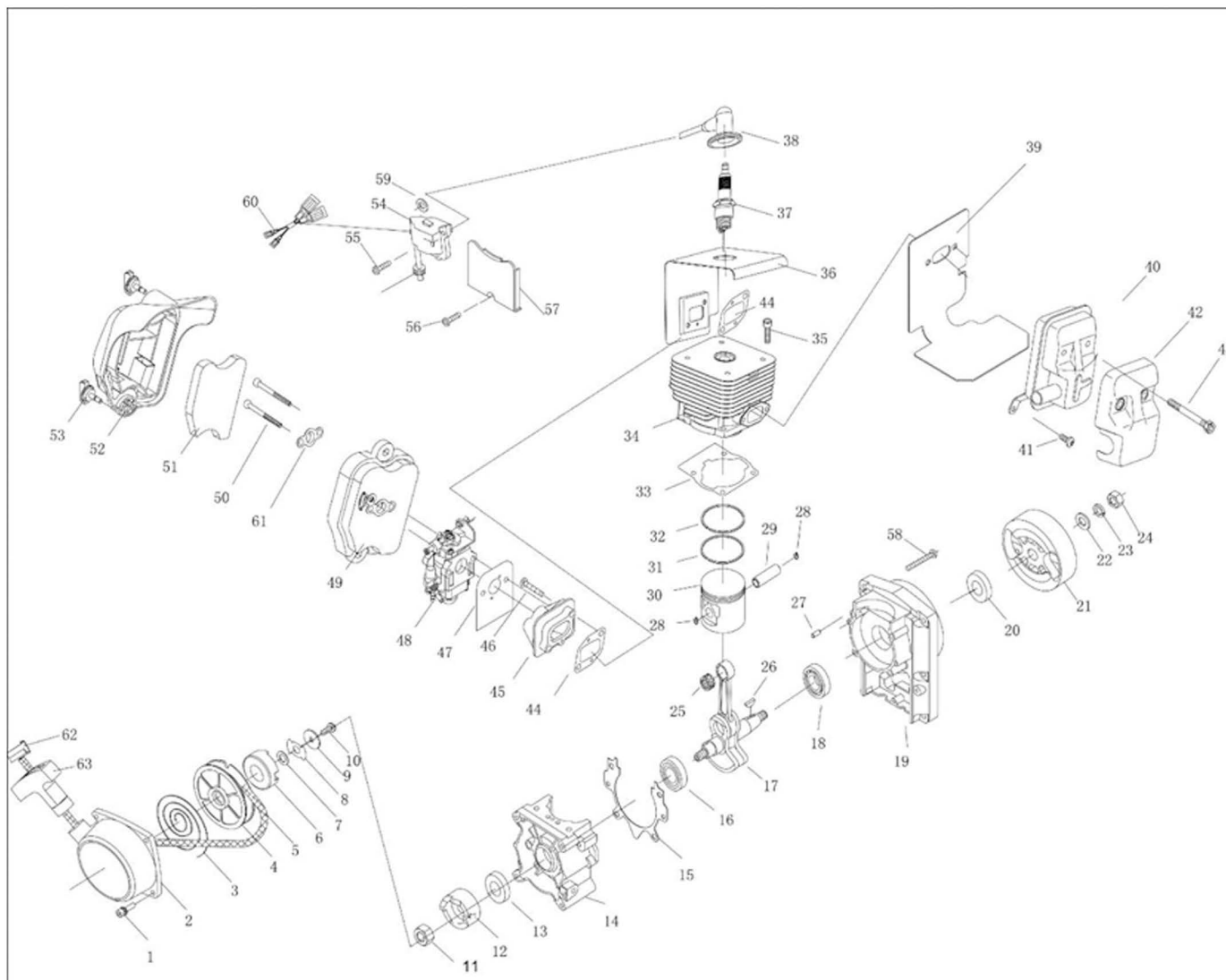
PROBLEM	CAUSE	SOLUTION
No dust discharge or discharge is intermittent	1. The dust gate cannot be opened	Adjust
	2. The tank lid not is tight	Tighten
	3. The dust or granule is dirty	Clean
	4. The dust/granule has lumps	Break lumps or replace
	5. The granules are too big	Use smaller granule
The dust gate does not work properly	1. Carburetor is dirty	Clean
	2. Hoses to tank are clogged	Clean
Dust leakage	1. The clamp plate of the chemical tank bottom is loose	Tighten
	2. The sealing gasket of the dusting lid is damaged	Replace
	3. The O ring of the elbow is damaged	Replace
The discharge rate is out of control	1. The dust control lever is not work properly	Adjust the cord or fix the carburetor.

# TOMAHAWK

**TMD14  
BACKPACK FOGGER**

**Parts Manual**



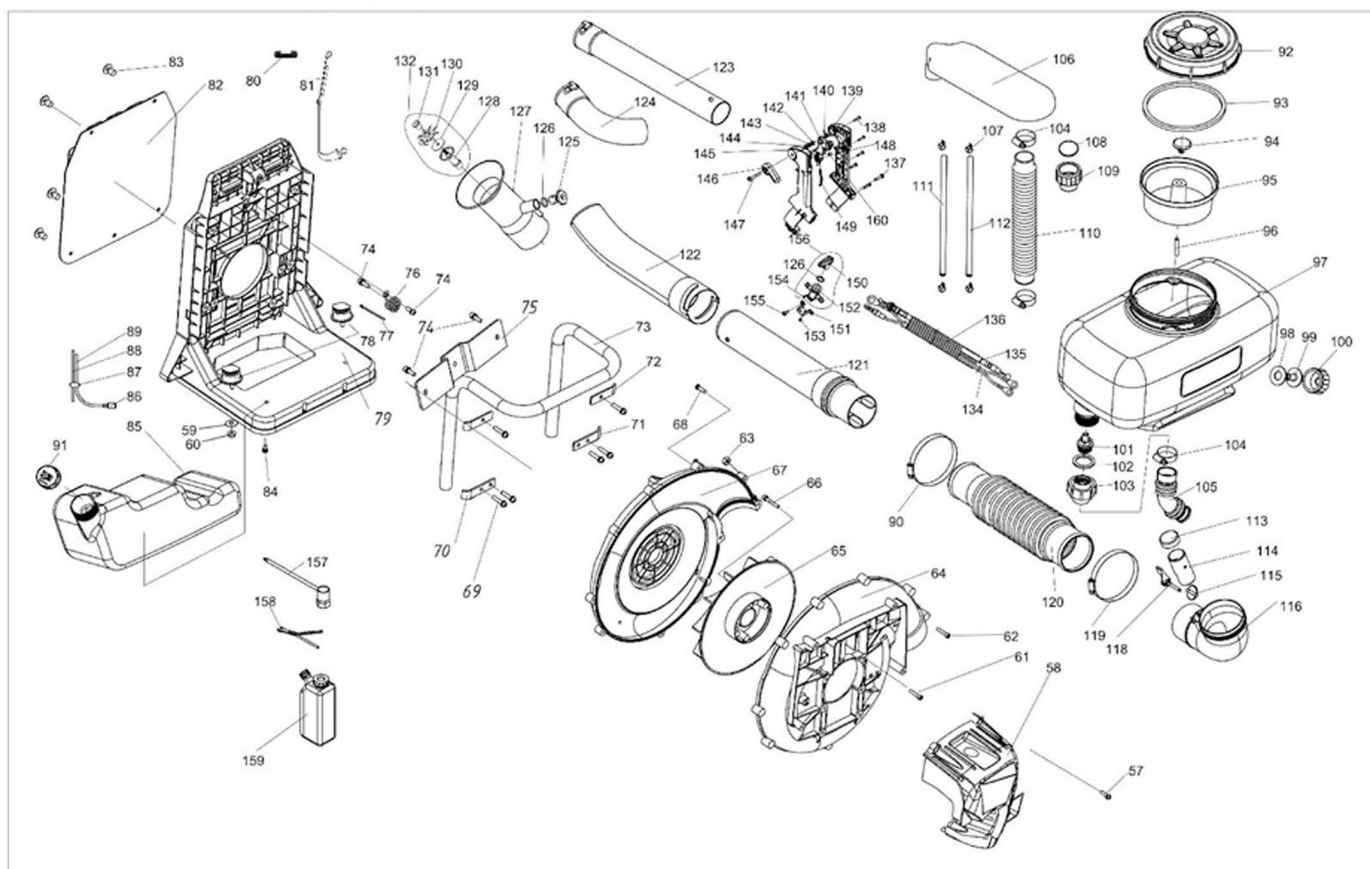


NO.	Part NO.	Part Name	Qty.
1	GB/T70.1+GB93+GB97	Screw M5X18	4
2	1E40FP-3Z.4-1	Case	1
3	1E40FP-3Z.4-7	Spring	1
4	1E40FP-3Z.4-6	Pulley	1
5	1E40FP-3Z.4-9	Rope	1
6	1E40FP-3Z.4-8	Start Wheel	1
7	GB860 8	Washer	1
8	1E40FP-3Z.4-5	Guide Slice	1
9	1E40FP-3Z.4-4	Washer	1
10	GB67 M5X12	Screw	1
11	GB6170 M8	Nut	1
12	3WF-960.1-2	Ratchet	1
13	1E36F.2	Oil-Seal	2
14	1E40F-E.6-2	Crank Case	1
15	1E40F-5.8-4	Gasket	1



NO.	Part NO.	Part Name	Qty.
16	GB/T276	Bearing 6202/P6	1
17	EB-500-E.1.2.1	Crank Shaft	1
18	GB/T276	Bearing 6202/P6	1
19	EB-500-E.1.3-1	Crank Case	1
20	1E40F-5.9	Oil-Seal	1
21	1E46FP.1.1	Fly Wheel	1
22	GB96 8	Washer	1
23	GB96 8	Washer	1
24	GB6170 M8	Nut	1
25	1E44F-2A.2-3	Bearing	1
26	GB1099	Key 3X5X13	1
27	GB119	4H8×10	1
28	P40.6-4	Ring	2
29	1E44F-2A.2-2	Piston Pin	1
30	1E44F-E.3-1	Piston	1
31	1E44F-2A.2-4	Piston Ring	1
32	1E44F-2A.2-4	Piston Ring	1
33	1E40F-5-6	Gasket	1
34	EB-500-E.1-2	Cylinder	1
35	GB70.1	Screw M5X20	4
36	EB-500-E.1-1	Mantle	1
37	RCJ6Y	Spark Plug	1
38	1E46FP.1-1	Plug Cap Ass.	1
39	EB-500-E.1-4	Gasket	1
40	EB-500-E.1.1	Muffler	1
41	GB/T70.1+GB93+GB97	Screw M5×12	1
42	EB-500-E.1-3	Muffler Shield	2
43	GB70.1+GB97	Screw M6×60-12.9	2
44	1E40F-5-2	Gasket	2
45	1E44F-E-PBJ.7	Admitting Pipe	1
46	GB70.1 5*25	Screw	2
47	EB-500-E.1-5	Gasket	1
48	1E48FP-E.4	Carburetor	1
49	EB-500-E.1.6.1	Cleaner Inside Cover	1
50	GB70.1+GB93+GB97	Screw M5×55	2
51	EB-500-E.1.6-3	Filter Net	1
52	EB-500-E.1.6-1	Cleaner Outside Cover	1
53	1E34F.1.2A	Screw	2
54	1E46FP.1.1	Ignition Coil Comp.	1
55	GB/T9074.13 M4X20	Bolt	2
56	GB/T9074.4 M5X20	Bolt	1
57	1E46FP-2	Shield	1
58	GB70.1	Screw M5×30	4

NO.	Part NO.	Part Name	Qty.
59	P40-5	Washer	2
60	EB-500-E.1-6	Parking	1
61	P40.1-3	Baffle	1
62	1E40FP-3Z.4-10	Cover	1
63	1E40FP-3Z.4-3	Cover	1
64	1E40FP-3Z.4-2	Handle	1



NO.	Part NO.	Part Name	Qty.
57	3WF-20.9-2	Screw	4
58	EB-500-E-4	Protection	1
59	GB/T96	Washer 6	2
60	GB/T6177	Nut M6	2
61	GB70+GB93+GB97	Screw M6×30	6
62	GB/T818	Screw M5×70	2
63	GB/T6170	M5 Nut	2
64	EB-500-E.2-1	Volute Case	1
65	EB-500-E.2.3	Impeller	1
66	GB70+GB93+GB97	Screw	4
67	EB-500-E.2-2	Volute Case	1
68	XSS46-2.2-5	Screw	10
69	GB70+GB93+GB97	Screw	6
72	3WF-14-9	Board	2
73	3WF-14B-4A	Support	1

NO.	Part NO.	Part Name	Qty.
74	GB70+GB93+GB97	Screw	4
75	3WF-14B-3	Board	3
76	3WF-14-12	Spring	1
77	250*4.5	Line	1
78	3F-30.17	Rubber Pillar	2
79	3WF-14-7	Frame	1
80	EB-650-10	Axis	2
81	EB-650.10	Gallus	2
82	3WF-14.7	Mat	1
83	3WF-2.6B-2	Plastic Clip	5
84	GB/T9074.4 M6×12	Screw	2
85	EB-500-E.4-1	Gasoline Tank	1
86	1E34F.9.2-3D	Filter	1
87	EB-415.4.2-2	Stopper	1
88	EB-415.4.2-4	Tube(180Mm)	1
89	CG420.1.3.2-2	Tube(350Mm)	1
90	GB/T 8870	Hoopø59-ø82	1
91	1E32FL.6.2	Lid	1
92	3WF-8.1-2A	Lid	1
93	3WF-8.1-1	Sealing Washer	1
94	3WF-14.3-1	Air Valve	1
95	3WF-14.3-3	Filter	1
96	GB/T13527.1 8×1.5×500	Tube	1
97	3WF-14B.2-1	Chemical Tank	1
98	3WF-3A.1-2	Sealing Washer	1
99	3WF-3A.1-1	Link Pipe	1
100	3WF-3A.1-3	Connector Lid	1
101	3W-16.4-2	Connector	1
102	3W-16.4-3	Sealing Washer	1
103	3W-16.4-1	Connector Lid	1
104	JB/T8870	Hoopø25-ø40	3
105	3WF-14B-5	Connector	1
106	3WF-16.2-1	Tube	1
107	3WF-3-3	Tube	4
108	3WF-950.2.1-2	Loop	1
109	3WF-950.2.1-1	Connector Lid	1
110	3WF-16.2-3	Tube	1
111	GB/T13527.1 10×1.5×830	Tube	1
112	GB/T13527.1 10×1.5×880	Tube	1
113	3WF-16.3-1	Plug	1
114	3WF-950.1.1-1	Tube	1
115	3WF-16.3.1-3	Board	1
116	3WF-14B.1.1-1	Elbow	1

NO.	Part NO.	Part Name	Qty.
118	3WF-16.3.1-2A	Switch	1
119	GB/T 8870	Hoopø78-ø102	1
120	3WF-3.19-4	Tube	1
121	3WF-2.6.4.1	Connector	1
122	3WF-2.6.4-2	Tube	1
123	3WF-2.6.4-4	Tube	1
124	3WF-2.6.4-3	Tube	1
125	3WF-3.19.3-3	Valve	1
126	GB1235 16×2.4	Sealing Washer	1
127	3WF-2.6.4.3-1	Nozzle	1
128	3WF-2.6.4.3.1.1	Nozzle	1
129	3WF-2.6.4.3.1-1	Washer	1
130	3WF-2.6.4.3.1-3	Rotation Impeller	1
131	3WF-2.6.4.3.1-2	Seat	1
132	3WF-2.6.4.3.1	Nozzle	1
133			
134	3W-15A-3	Line	1
135	3WF-14B.3.1.1	Line	1
136	CG328.1.1-4	Tube	1
137	GB/T 845	St5.5*25 Screw	1
138	GB/T 845	St4.2*19 Screw	5
139	3WF-14.5.1-2	Handgrip	1
140	3WF-14.5.1-7	Spring	1
141	3WF-14.5.1-3	Handgrip	1
142	GB/T6172.2	M6 Nut	1
143	3WF-14.5.1-8	Washer	1
144	GB/T955	Washer	1
145	3WF-14.5.1-1	Handgrip	1
146	3WF-14.5.1-10	Handgrip	1
147	3WF-14.5.1-9	Screw	1
148	3WF-14.5.1-5	Switch	1
149	3WF-14.5.1-4	Patch	1
150	3WF-3.19.1-1	Core	1
151	3WF-14.5.1.2-1	Seat	1
152	3WF-3.19.1-2	Shell	1
153	GB/T 845	St4.2X8 Screw	1
154	GB/T828	M3X5X2.5 Screw	2
155	GB/T845	St4.8*13 Screw	1
156	3WF-3.19.1	Cock Assem(No Board)	1
157	3WZ-4.15.1	Spanner	1
158	3WF-3.25.4	Chain	1
159	ZB4-10.1	Oil Bottle	1
160	3WF-14.5.1-6	Sheath	1



## **CALIFORNIA AND FEDERAL EMISSION CONTROL WARRANTY STATEMENT**

### **YOUR WARRANTY RIGHTS AND OBLIGATIONS**

The California Air Resources Board, the United States Environmental Protection Agency and Tomahawk Power, LLC are pleased to explain the emissions control system warranty on your 2021-2022 small engine/equipment (SORE). In the United States and California, new small engine/equipment must be designed, built and equipped to meet the State's stringent anti-smog standards. Tomahawk Power, LLC must warrant the emissions control system on your small engine/equipment for the periods of time listed below provided there has been no abuse, neglect or improper maintenance of your small engine/equipment.

Your emission control system may include parts such as the carburetor, fuel-injection system, the ignition system, catalytic convertor, fuel tanks, fuel lines, fuel caps, valves, canisters, filters, vapor hoses, belts, clamps, connectors, and other associated emission-related components. For engines less than or equal to 80 cc, only the fuel tank is subject to the evaporative emission control warranty requirements of this section.

(California only)

Where a warrantable condition exists, Tomahawk Power, LLC will repair your small off-road engine/equipment at no cost to you including diagnosis, parts and labor.

### **MANUFACTURER'S WARRANTY COVERAGE:**

The emissions control system is warranted for two years. If any emissions-related part on your small engine/equipment is defective, the part will be repaired or replaced by Tomahawk Power, LLC

### **OWNER'S WARRANTY RESPONSIBILITIES:**

As the small engine/equipment owner, you are responsible for the performance of the required maintenance listed in your owner's manual. Tomahawk Power, LLC recommends that you retain all receipts covering maintenance on your small engine/equipment, but Tomahawk Power, LLC cannot deny warranty solely for the lack of receipts or for your failure to ensure the performance of all scheduled maintenance.

As the small engine/equipment owner, you should however be aware that Tomahawk Power, LLC may deny your warranty coverage if your small engine/equipment or a part has failed due to abuse, neglect, improper maintenance or unapproved modifications.

You are responsible for presenting your small engine/equipment to distribution center or service center authorized by Tomahawk Power, LLC as soon as the problem exists. The warranty repairs should be completed in a reasonable amount of time, not to exceed 30 days.

If you have any questions regarding your warranty rights and responsibilities, you should contact Tomahawk Power, LLC customer service representative at 1-866-577-4476 or Email: [support@tomahawk-power.com](mailto:support@tomahawk-power.com) .

## DEFECTS WARRANTY REQUIREMENTS

(a)The warranty period begins on the date the small engine/equipment is delivered to an ultimate purchaser.

(b)General Emissions Warranty Coverage. Tomahawk Power, LLC warrants to the ultimate purchaser and each subsequent owner that the engine/equipment is:

- (1) Designed, built, and equipped so as to conform with all applicable regulations adopted by the Air Resources Board; and
- (2) Free from defects in materials and workmanship that causes the failure of a warranted part for a period of two years.

(c)Subject to certain conditions and exclusions as stated below, the warranty on emissions related parts is as follows:

(1)Any warranted part that is not scheduled for replacement as required maintenance in your **Owner's Manual** is warranted for the warranty period stated above. If the part fails during the period of warranty coverage, the part will be repaired or replaced by Tomahawk Power, LLC according to Subsection (4) below. Any such part repaired or replaced under warranty will be warranted for the remainder of the period.

(2)Any warranted part that is scheduled only for regular inspection in your **Owner's Manual** is warranted for the warranty period stated above. Any such part repaired or replaced under warranty will be warranted for the remaining warranty period.

(3)Any warranted part that is scheduled for replacement as required maintenance in your **Owner's Manual** is warranted for the period of time before the first scheduled replacement date for that part. If the part fails before the first scheduled replacement, the part will be repaired or replaced by Tomahawk Power, LLC according to Subsection (4) below. Any such part repaired or replaced under warranty will be warranted for the remainder of the period prior to the first scheduled replacement point for the part.

(4)Repair or replacement of any warranted part under the warranty provisions herein must be performed at a warranty station at no charge to the owner.

(5)Notwithstanding the provisions herein, warranty services or repair will be provided at all of our distribution centers that are franchised to service the subject small engine/equipment.

(6)The small engine/equipment owner must not be charged for diagnostic labor that leads to the determination that a warranted part is in fact defective, provided that such diagnostic work is performed at a warranty station.

(7)Tomahawk Power, LLC is liable for damages to other small engine/equipment components proximately caused by a failure under warranty of any warranted part.

(8)Throughout the small engine/equipment warranty period stated above, Tomahawk Power, LLC will maintain a supply of warranted parts sufficient to meet the expected demand for such parts.

(9)Any replacement part may be used in the performance of any warranty maintenance or repairs and must be provided without charge to the owner. Such use will not reduce the warranty obligations of Tomahawk Power, LLC

(10) Add-on or modified parts that are not exempted by the Air Resources Board may not be used. The use of any non-exempted add-on or modified parts by the ultimate purchaser will be grounds for disallowing a warranty claim. Tomahawk Power, LLC will not be liable to warrant failures of warranted parts caused by the use of a non-exempted add-on or modified part.

(11) The manufacturer issuing the warranty shall provide any documents that describe that manufacturer's warranty procedures or policies within five working days of request by the Air Resources Board.

#### EMISSION WARRANTY PARTS LIST

The repair or replacement of any warranted part otherwise eligible for warranty coverage may be excluded from such warranty coverage if Tomahawk Power, LLC demonstrates that the small engine/equipment has been abused, neglected, or improperly maintained, and that such abuse, neglect, or improper maintenance was the direct cause of the need for repair or replacement of the part. That notwithstanding, any adjustment of a component that has a factory installed, and properly operating, adjustment limiting device is still eligible for warranty coverage. The following emissions warranty parts for each engine family list is covered.

For engine families greater than 80cc:

(1) Fuel Metering System:

(a) Gasoline carburetor assembly and its internal components

(b) Carburetor gaskets

(c) Fuel tank

(d) Fuel Line

(e) Fuel Line Fittings

(f) Clamps

(g) Pressure regulator (if equipped)

(h) Mixer assembly and its internal components (if equipped)

(2) Air Induction System including:

(a) Intake pipe/manifold

(b) Air cleaner

(3) Ignition System including:

(a) Spark plug

(b) Ignition coil

(4) Catalytic Muffler Assembly including:

(a) Muffler gasket

(b) Exhaust manifold

(c) Catalytic converter

(5) Crankcase Breather Assembly including:

(a) Breather connection tube.

(6) Fuel tank evaporative emissions control system including:

(a) Purge Valves

(b) Carbon Canister

(c) Canister Mounting Brackets

(d) Fuel Cap

(e) Fuel Tank

(7) Miscellaneous items Used in Above Systems including:

(a) Switches

(b) Hoses, belts, connectors, and assemblies.

(8) Air injection system

(a) Pulse valve

For engine families less than or equal to 80cc:

(1) Fuel Metering System:

(a) Gasoline carburetor assembly and its internal components

(b) Fuel filter (if so equipped)

(c) Carburetor gaskets

(d) Fuel pump (if so equipped)

(2) Air Induction System including:

(a) Intake pipe/manifold

(b) Air cleaner

(3) Ignition System including:

(a) Spark plug

(b) Ignition module/coil

(4) Catalytic Muffler Assembly (if so equipped) including:

(a) Muffler gasket

(b) Exhaust manifold

(5) Crankcase Breather Assembly including:

(a) Breather connection tube.

(6) Miscellaneous items Used in Above Systems including:

(a) Switches

(b) Hoses, belts, connectors, and assemblies.

(7) Fuel tank evaporative emissions control system including:

(a) Fuel Tank

The warranty is provided in accordance with the "California AND FEDERAL Emission Control Warranty Statement".



# TOMAHAWK

## PRODUCT CATALOG

### COMPACTION



HONDA  
ENGINES

**3,550 lbs/ft Vibratory Rammer**  
Part#: TR68H

3.6 HP Honda GXR120 Engine  
Easily achieve a 100% compaction rating  
3-in-One Fuel System with carburetor protection  
13" x 11" plate for narrow trenches and corners  
3 Year Engine Warranty & 1 Year Product Warranty



HONDA  
ENGINES

**3,400 lbs/ft Plate Compactor**  
Part#: TPC90H

5.5 HP Honda GX160 Engine  
Easily achieve a 100% compaction rating  
22" x 20" cold, rolled steel beveled base plate  
Includes 3.5 gallon water tank for asphalt compaction  
3 Year Engine Warranty & 1 Year Product Warranty



HONDA  
ENGINES  
KOHLER  
ENGINES

**3,000 lbs/ft Plate Compactor**  
Part#: TPC80 & TPC80H

6 HP Kohler CH260 & 5.5 HP Honda GX160 Engines  
Easily achieve a 100% compaction rating  
16.5" x 21.5" plate for narrow trenches and corners  
Optional Honda Engine model: TPC80H  
3 Year Engine Warranty & 1 Year Product Warranty

### FINISHING



**6.5 Gal Backpack Concrete Sprayer**  
Part#: TCS6.5

Maintain constant, adjustable pressure up to 450 PSI  
Achieve superior concrete finishes with even spraying  
Spray 15,000 sq ft in less than 10 minutes  
Compatible with major manufacturer wands  
1 Year Product Warranty



HONDA  
ENGINES

**1.6 HP Vibratory Concrete Screed**  
Part#: TVSA-H

1.6 HP Honda GX35 Engine  
Aluminum Magnesium blades available from 8ft - 14ft  
Finish concrete 4X faster than other screed methods  
360° adjustable handle placement  
3 Year Engine Warranty & 1 Year Product Warranty



HONDA  
ENGINES

**6" Early Entry Green Concrete Saw**  
Part#: TFS6H

5.5 HP Honda GX160 Engine  
Maximum cutting depth of 1 3/16 inches  
OSHA compliant vacuum port for dust collection  
Includes 6" early entry concrete blade  
3 Year Engine Warranty & 1 Year Product Warranty

### FINISHING



HONDA  
ENGINES

**1.6HP Backpack Concrete Vibrator**  
Part#: TVIBH + TVW10-P

1.6 HP Honda GX35 engine  
Consolidation with speeds of 10,000-12,000 VPM  
Quick Connect centrifugal clutch vibrator  
1" and 2" Diameter Whips Available in 10ft Length  
3 Year Engine Warranty & 1 Year Product Warranty



HONDA  
ENGINES

KOHLER  
ENGINES

**36" & 46" Concrete Power Trowel**  
Part#: TPT36H/K & TPT46H/K

6 HP/14HP Kohler & 5.5HP/8.5HP Honda Engines  
Adjust trowel blade pitch from 0-28°  
60-115 RPM rotor speed for superior concrete finishes  
Includes float pan and trowel blades  
3 Year Engine Warranty & 1 Year Product Warranty



HONDA  
ENGINES

**8" Gas Powered Concrete Scarifier**  
Part#: TSCAR8H

5.5 HP Honda GX160 Engine  
Remove traffic lines at 800 - 1,000 linear ft/hr  
Tungsten Carbide Blade Kit Available  
OSHA approved dust port for silica vacuum removal  
3 Year Engine Warranty & 1 Year Product Warranty

HAVE QUESTIONS?

Contact us. *We're here to help!*

Email us at [sales@tomahawk-power.com](mailto:sales@tomahawk-power.com)



USE CODE

**SAVE10**

AT CHECKOUT FOR

**10% OFF YOUR ORDER AT**  
WWW.TOMAHAWK-POWER.COM

## POWER / WELDING

INVERTER SERIES



**2000 Watt Inverter Generator**  
Part#: TG2000i

2000 Max Watts, 1600 Rated Watts  
Run Time of 8 hours on 1 gallon of gas  
OSHA and GFCI Compliant  
Parallel technology capable for double the power  
2 Year Product Warranty

INVERTER SERIES



**210 Amp Portable Welder Generator**  
Part#: TWG210A

Steady 50 - 210 Amp DC welding output  
60% Duty Cycle for extended use  
Suitable for welding rods from 6010 to 7024  
Electric Key Start with battery included  
2 Year Product Warranty



**7000 Watt Generators**  
Part#: TG7000

7000 Max Watts, 5500 Rated Watts  
Voltage Selector gives Full Wattage for 120V or 240V  
Run Time of 8 hours at 50% Load  
OSHA and GFCI Compliant  
2 Year Product Warranty

## PEST CONTROL



**3.7 Gallon 3HP Backpack Fogger**  
Part#: TMD14

Turbo Boosted Pump with 40ft + Horizontal Reach  
Sprays 1 acre in 30 minutes  
10X Faster than Manual Pump Sprayers  
Converts to Leaf Blower with 200 MPH Air Velocity  
1 Year Product Warranty



**4.75 Gallon Battery Power Sprayer**  
Part#: eTPS18

Reach Up to 30ft Horizontal Reach  
Sprays 6000 sq ft in 10 minutes  
10X Faster than Manual Pump Sprayers  
70 PSI Commercial Grade Pump  
1 Year Product Warranty



**5 Gallon Backpack Power Sprayer**  
Part#: TPS25

Reach Up to 30ft Horizontal Reach  
Sprays acres in 10 minutes  
10X Faster than Manual Pump Sprayers  
50-435 Adjustable PSI Commercial Grade Pump  
1 Year Product Warranty

## AND MORE



**4 Gal. Backpack Fertilizer Spreader**  
Part#: TGS30

Reach up to 30ft Horizontally  
Sprays 1 acre in 30 minutes  
20X Faster than push spreaders  
Converts to Leaf Blower with 200 MPH Air Velocity  
1 Year Product Warranty



HONDA  
ENGINES

**3" Full Trash Water Pump**  
Part#: TW3H

Moves liquids at a rate up to 375 gal/min  
Handle solids up to 1.5"  
Silicone carbide seals and a chrome plated volute  
8 HP engine protected by rugged all purpose frame  
3 Year Engine Warranty & 1 Year Product Warranty



**Commercial 38" Push Sweeper**  
Part#: TOS38

Collect up to 14.5 gallons of dust and debris  
Can be used indoors & outdoors on wet or dry surfaces  
Includes integrated airflow control and fine dust filter  
Lightweight design, capable of fitting through doorways  
1 Year Product Warranty

ASSEMBLED IN THE  
**USA**  
PARTS SOURCED GLOBALLY

\* All coupons in this manual are valid only for orders placed on [www.tomahawk-power.com](http://www.tomahawk-power.com), unless otherwise noted. Coupon codes may only be used once per customer and may not be combined with any other offer. Coupons may expire at any time without notice.

(866) 577-4476

[www.tomahawk-power.com](http://www.tomahawk-power.com)





## Power Your World

Tomahawk understands to keep a job-site running smoothly the proper equipment and spare parts are needed at the drop of a hat. With same day shipping and faster delivery times, count on Tomahawk to keep you powered throughout the day! With long lasting parts and engines, Tomahawk equipment will be the star of your fleet for years to come. Visit [www.tomahawk-power.com](http://www.tomahawk-power.com) to get started today!

# TOMAHAWK

Tomahawk Power, LLC  
San Diego, CA

### Sales Support

(866) 577-4476  
[sales@tomahawk-power.com](mailto:sales@tomahawk-power.com)

### Equipment Support

(866) 577-4476  
[support@tomahawk-power.com](mailto:support@tomahawk-power.com)

[www.tomahawk-power.com](http://www.tomahawk-power.com)



### FACEBOOK

[facebook.com/TomahawkPowerUSA](https://facebook.com/TomahawkPowerUSA)

### YOUTUBE

[youtube.com/TomahawkPower](https://youtube.com/TomahawkPower)

### INSTAGRAM

[@tomahawkpower](https://instagram.com/tomahawkpower)