

TOMAHAWK

TBS500
SKID SPRAYER

Operation Manual



FIND THE HOW TO GUIDE HERE



TABLE OF CONTENTS

1. QUICK START GUIDE	4
2. SAFETY INFORMATION	6
1.1 Operating Safety	7
1.2 Service Safety	8
1.3 Safety While Using Combustion Engines	8
3. EQUIPMENT PERFORMANCE	9
2.1 Design and Features	9
2.2 Honda GX35 Engine	9
2.3 Adjustable Pressure	9
2.4 Specifications	9
4. PRIMING THE PUMP	10
5. OPERATING PROCEDURES	11
3.1 Starting the Engine	11
3.1 Sprayer Operation	12
3.1 Stopping the Engine	12
6. PARTS MANUAL	15
7. TOMAHAWK CATALOG	22

Register Your Equipment

Thank you for purchasing TOMAHAWK equipment! Your product is covered by the TOMAHAWK Warranty Policy, but in order to activate your warranty, we need you to register your product. In addition to activating your equipment warranty, product registration will grant you access to important product updates, streamlined customer service, and more.

INCLUDED WITH YOUR REGISTRATION

- ✓ Equipment Warranty Activation
- ✓ Product Updates
- ✓ Streamlined Customer Service
- ✓ Exclusive Discounts and Sales

STEPS TO REGISTER YOUR EQUIPMENT

1. Visit www.tomahawk-power.com
2. Choose “Product Registration” at the bottom of the page
3. Enter your equipment’s serial number to get started
4. Provide all required information
5. Submit Registration

Equipment Resources

Tomahawk Customer Service doesn’t stop at checkout. We understand to keep a job-site running smoothly - the proper equipment, spare parts, instruction manuals, and more are needed at the drop of a hat. Visit www.tomahawk-power.com to gain access to the incredible resources below.

How To Video Library

More of a visual person? Visit our Video Library for equipment assembly instructions, troubleshooting tips, and more!

Found on each product listing or the Service Videos Page

Manual and Assembly Guide Library

Visit our Manual Library if you are looking for a lost operations manual or a particular spare part?

Found on each product listing or the Tomahawk Manuals Page

Service Requests

In need of a quick fix or a service center referral? Submit a Service Request and a Tomahawk Technician will respond shortly to get you the help you need.

Choose “Service Request” at the bottom of www.tomahawk-power.com



TOMAHAWK

TBS500: Skid Sprayer Assembly Pt. 1

www.tomahawk-power.com



1 Remove the motor and all parts from the packaging.



2 Attach the end of the orange tube to the base of the pump.



3 Attach the front of the orange tube to the filter.



4 Attach the end of the clear tube below the pressure adjustment knob.



5 All connections should resemble the image above.



6 Attach the reel handle using the nut included in the packaging.

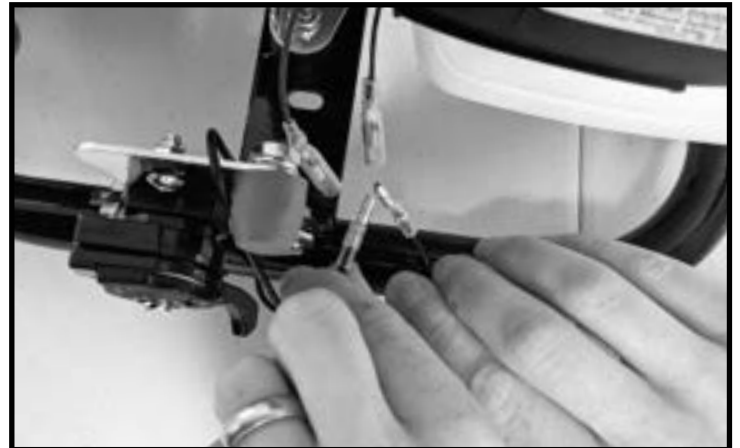
TOMAHAWK

TBS500: Skid Sprayer Assembly Pt.2

www.tomahawk-power.com



7 Attach the throttle control using the last 2 screws and nuts.



8 Connect the throttle wires to the Honda Engine wires. Left to Left. Right to Right.



9 Place the throttle cable end into the gap and fit the cable along the top of the throttle.



10 Remove the air filter to access the engine's throttle control terminal.



11 Fit the top of the cable housing into the slot and tighten the locknuts.



12 Pull the housing back and slide the end of the cable into the engine's throttle terminal.*

* Move the throttle control back and forth to make sure the cable is engaged.

This manual provides information and procedures to safely operate and maintain this equipment. For your own safety and protection from injury, carefully read, understand, and observe the safety instructions described in this manual.

Keep this manual or a copy of it with the equipment. If you lose this manual or need an additional copy, please contact Tomahawk Power LLC or visit www.tomahawk-power.com. This equipment is built with user safety in mind; however, it can present hazards if improperly operated or serviced. Follow operating instructions carefully. If you have questions about operating or servicing this equipment, contact Tomahawk Power.

The information contained in this manual is based on equipment's production at the time of publication. Tomahawk Power reserves the right to change any portion of this information without notice.

No part of this publication may be reproduced in any form or by any means, electronic or mechanical, including photocopying, without express written permission from Tomahawk Power.

Any type of reproduction or distribution not authorized by Tomahawk Power represents an infringement of valid copyrights and will be prosecuted. We expressly reserve the right to make technical modifications, even without due notice, which aim at improving our machines or their safety standards.

2. SAFETY INFORMATION

This manual contains DANGER, WARNING, CAUTION, and NOTE callouts which must be followed to reduce the possibility of personal injury, damage to the equipment, or improper service.



This is the safety alert symbol. It is used to alert you to potential personal injury hazards. Obey all safety messages that follow this symbol to avoid possible injury or death.



DANGER indicates an imminently hazardous situation which, if not avoided, will result in death or serious injury.



WARNING indicates a potentially hazardous situation which, if not avoided, could result in death or serious injury.



CAUTION indicates a potentially hazardous situation which, if not avoided, may result in minor or moderate injury.

CAUTION: Used without the safety alert symbol, **CAUTION** indicates a potentially hazardous situation which, if not avoided, may result in property damage.

2.1 Operating Safety



WARNING

Familiarity and proper training are required for the safe operation of equipment! Equipment operated improperly or by untrained personnel can be dangerous! Read the operating instructions contained in both this manual and the engine manual and familiarize yourself with the location and proper use of all controls. Inexperienced operators should receive instruction from someone familiar with the equipment before being allowed to operate the machine.

2.2.1 NEVER allow anyone to operate this equipment without proper training. People operating this equipment must be familiar with the risks and hazards associated with it.

2.2.2 NEVER touch the engine or muffler while the engine is on or immediately after it has been turned off. These areas get hot and may cause burns.

2.2.3 NEVER use accessories or attachments that are not recommended by Tomahawk Power. Damage to equipment and injury to the user may result.

2.2.4 NEVER leave machine running unattended.

2.2.5 ALWAYS be sure operator is familiar with proper safety precautions and operation techniques before using machine.

2.2.6 ALWAYS wear ANSI Z87.1-approved safety goggles or safety glasses with side shields, or when needed, a face shield. Use a dust mask in dusty work conditions. Also use non-skid safety shoes, hardhat, gloves, dust collection systems, and hearing protection when appropriate. This applies to all persons in the work area.

2.2.7 ALWAYS close fuel valve on engines equipped with one when machine is not being operated.

2.2.8 ALWAYS store equipment properly when it is not being used. Equipment should be stored in a clean, dry location out of the reach of children.

2.2.9 ALWAYS operate machine with all safety devices and guards in place and in working order. DO NOT modify or remove safety devices. DO NOT operate machine if any safety devices or guards are missing or inoperative.

2.2.10 ALWAYS read, understand, and follow procedures in Operator's Manual before attempting to operate equipment.

2.2 Service Safety



WARNING

Poorly maintained equipment can become a safety hazard! In order for the equipment to operate safely and properly over a long period of time, periodic maintenance and occasional repairs are necessary.

2.3 Safety while using Combustion Engines



WARNING

Internal combustion engines present special hazards during operation and fueling! Read and follow warning instructions in engine owner's manual and safety guidelines below. Failure to follow warnings and DANGER safety guidelines could result in severe injury or death.

2.3.1 DO NOT run machine indoors or in an enclosed area such as a deep trenches unless there is adequate ventilation, through such items as exhaust fans or hoses are provided. Gasoline exhaust from the engine contains poisonous carbon monoxide gas; exposure to carbon monoxide can cause loss of consciousness and may lead to death.

2.3.2 DO NOT smoke while operating machine.

2.3.3 DO NOT smoke when refueling engine.

2.3.4 DO NOT refuel hot or running engine.

2.3.5 DO NOT refuel engine near open flame.

2.3.6 DO NOT spill fuel when refueling engine.

2.3.7 DO NOT run engine near open flames.

2.3.8 ALWAYS refill fuel tank in well-ventilated area.

2.3.9 ALWAYS replace fuel tank cap after refueling.

2.3.10 ALWAYS check fuel lines and fuel tank for leaks and cracks before starting engine.

2.3.11 DO NOT run machine if fuel leaks are present or fuel lines are loose.

3. EQUIPMENT PERFORMANCE

3.1 Design and Features

Tomahawk Skid Sprayers are your best solution for industrial pest control. Perfect for applying pesticides around commercial and residential areas, reach further distances around homes, barns, rural areas, and more with the included 100 ft hose! Versatile in design, this sprayer fits most tanks.

3.2 Honda GX35 Engine

The ultra-lightweight GX35 Mini 4-Stroke efficiently delivers the kind of efficient cleaner, powerful, quiet performance that you'd expect from a larger engine – but in a very compact package.

3.3 Adjustable Pressure

With a powerful engine, maintain constant, adjustable pressure from 50 - 500 PSI for even spraying!

3.4 Specifications

Model	TBS500
Suction Capacity	2.8GPM
Working Pressure	50-500 PSI
Pump	Twin Pumping Brass Pump
Spray Hose	100 ft
Engine	Honda GX35 4 stroke
Engine Displacement	35cc
Fuel Type	87 octane or better gasoline
Oil Type	SAE10W-30
Fuel Tank Capacity	1 qt
Starting Systems	Recoil Start
Agitator Diameter	5"
Dimensions	27" x 12" x 13"
Weight	48 lbs

4. PRIMING THE PUMP

4.1. Connect the filter to the orange hose.

4.2. Place the filter and clear tube into your tank or water receptacle of choice.

4.3. Start the engine [See Page 11].

4.4. Shake the orange hose up and down to help the fluid be pulled through the tube.

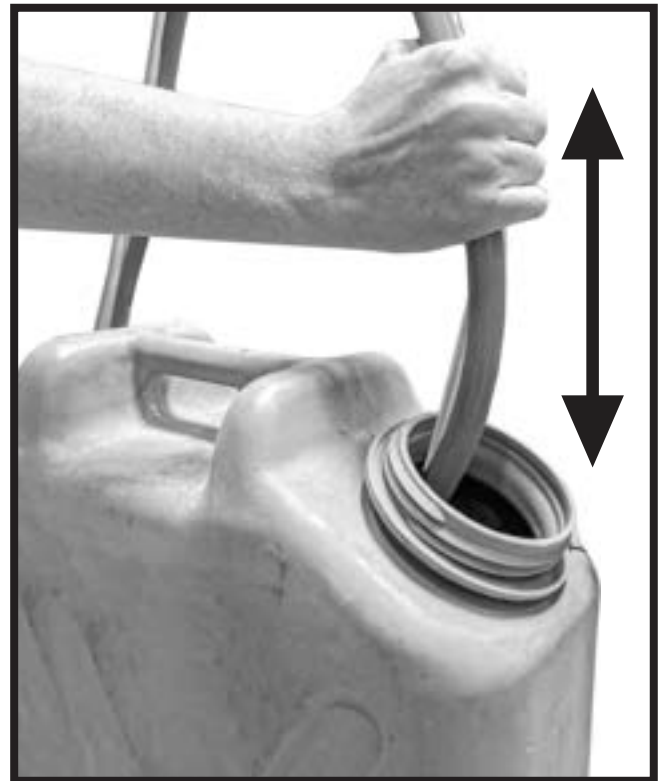
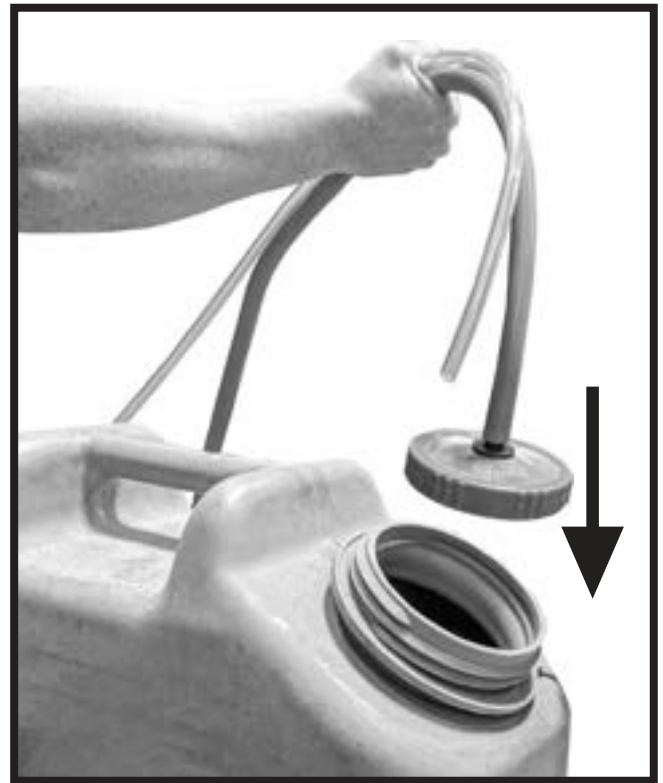
NOTE: Better results may be achieved if the skid sprayer sprayer pump is placed below the water tank.

4.2 Under Priming the Pump

4.2.1 All air must be out of the hoses in order to prime the pump. If the machine is not spraying check to see the pump is primed.

4.2.2 Do not run the pump without water or liquid. This will damage internal ceramic seals and could damage the pump, voiding the warranty.

4.2.3 After every use, make sure to the rinse pump and flush with hoses with water. Any chemicals left in the pump and hoses can crystallize causing damage, voiding the warranty.



5. OPERATING PROCEDURES

3.1 Starting the Engine

3.1.1 To start a cold engine, move the choke lever to the CLOSED position.

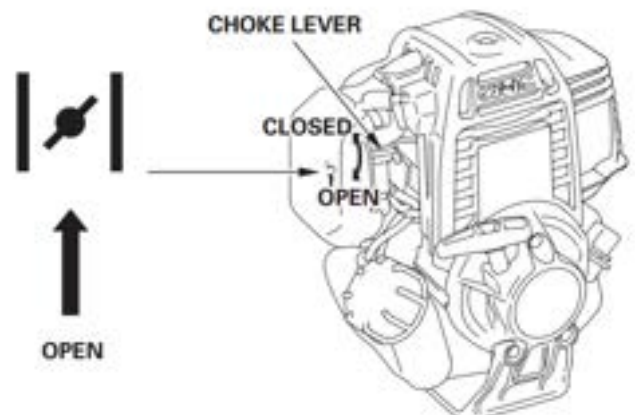
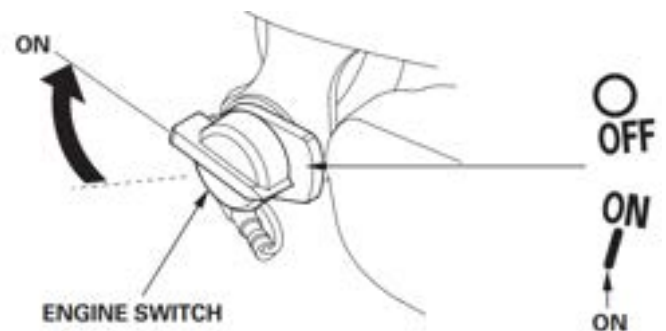
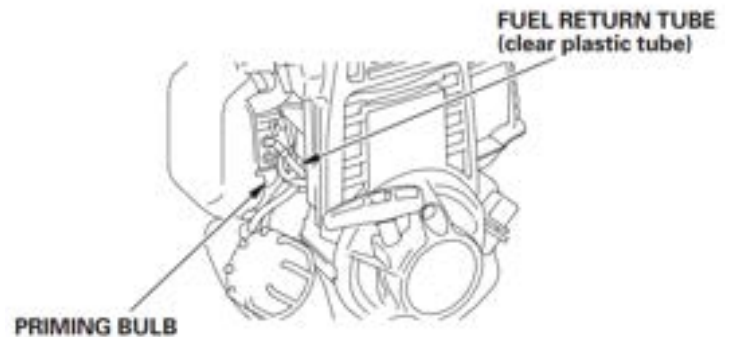
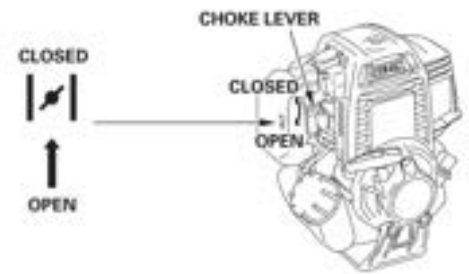
To restart a warm engine, leave the choke lever in the OPEN position.

5.1.2 Press the priming bulb repeatedly until fuel can be seen in the clear-plastic fuel-return tube.

5.1.3 Turn the engine switch to the ON position.

5.1.4 Pull the starter grip lightly until you feel resistance, then pull briskly. Return the starter grip gently.

5.1.5 If the choke lever was moved to the CLOSED position to start the engine, gradually move it to the OPEN position as the engine warms up.





Do not allow the starter grip to snap back against the engine.
Return it gently to prevent damage to the starter.

5.2 Sprayer Operation

5.2.1 Attach your desired nozzle or spraying attachment to the hose.

5.2.2 Place the filter and suction hose into your tank or water receptacle.

5.2.3 Start the engine using the guide above.

5.2.4 Adjust the engine speed using the throttle on the left side of the engine.

5.2.5 Adjust the pressing the red valve behind the engine.

5.3 Stopping the Engine

5.3.1 Press the red STOP button next to the throttle.

5.3.2 Move the engine throttle lever to the full closed position.

5.3.3 Turn the engine switch to the OFF position.

5.3.4 Close the fuel valve.

5.3.5 Clean the machine.

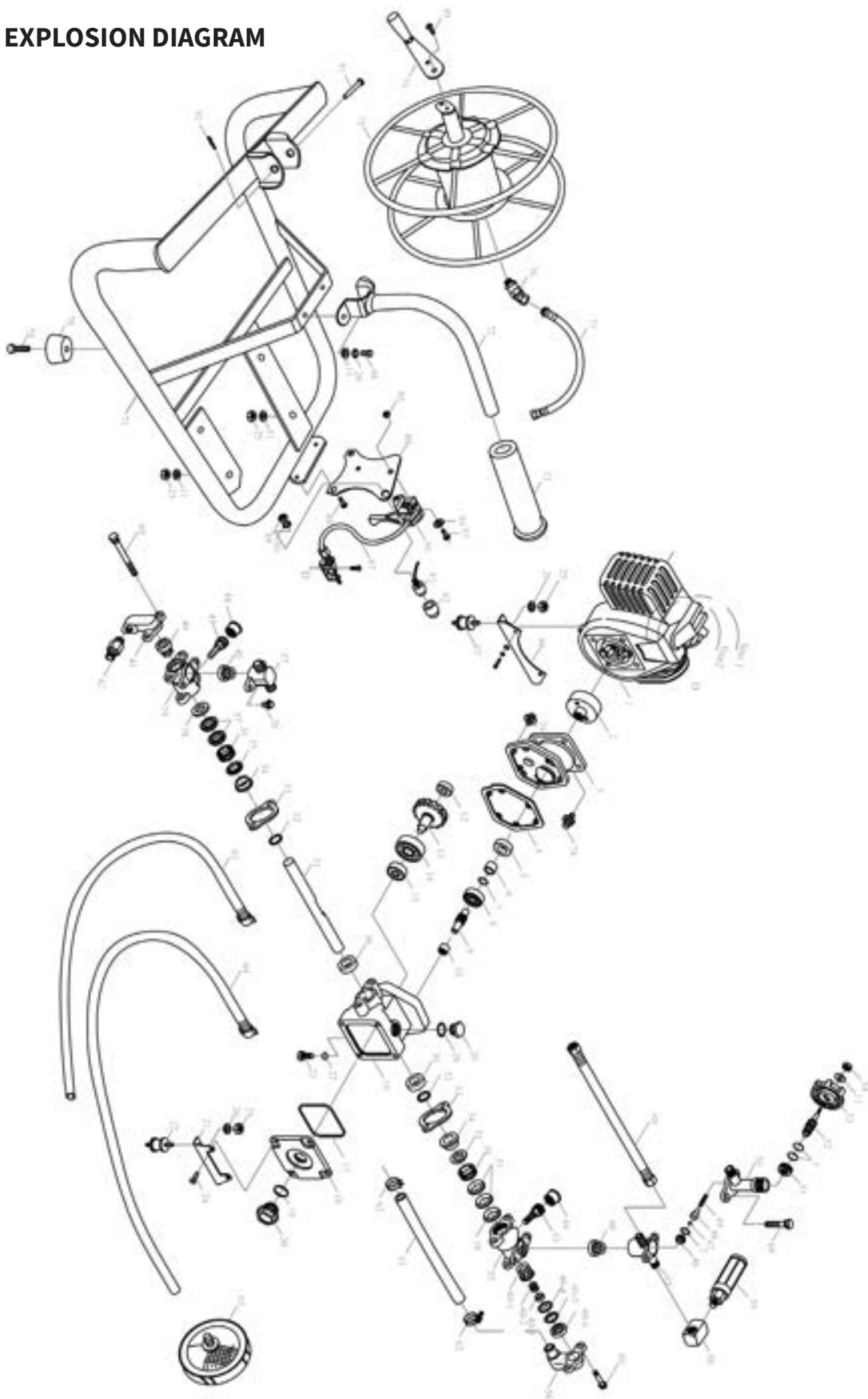
TOMAHAWK

TBS500
SKID SPRAYER

Parts Manual



TBS500 EXPLOSION DIAGRAM



TBS500 PART LIST

No.	Description	Qty
1	Engine	1
2	Drum Clutch	1
3	Drum Case	1
4	Gasket	1
5	Oil Seal	1
6	Steel Pipe	1
7	O-Ring	4
8	Bearing 6201	1
9	Shaft	1
10	Bearing Hk1010	1
11	Steel Pin	2
12	Bearing 608	1
13	Gear Shaft	1
14	Bearing 6203	1
15	Bearing 6200	1
16	Crank Case	1
17	O-Ring	1
18	Crank Case Cover	1
19	O-Ring	1
20	Oil Glass	1
21	Pump Stand	1
22	O-Ring	1
23	Drain Plug	1
24	Screw	6
25	Nnt	4
26	Spring Washer	8
27	Joint	2
28	O-Ring	1
29	Oil Inlet Cup	1
30	Oil Seal	2
31	Plunger	1
32	O-Ring	2
33	Fixed Plate	2
34	Adjusting Ring	2
35	Grease Ring	2
36	V-Packing Upper Seal	2
37	V-Packing	4
38	Packing Seat	2
39	Cylinder	1
40	Valve A'Ssy	4
40-1	Valve Nut	
40-2	Valve Spring	
40-3	Valve Plug	

TBS500 PART LIST

No.	Description	Qty
40-3	Valve Plug	
40-4	Valve Seat	
40-5	Valve Ring	
40-6	Valve Packing	
41	Suction Chamber	1
42	Connector	1
43+44	Grease Cup	2
45	Outlet Chamber	1
46	Valve Seat	1
47	Pressure Valve	1
48	Pressure Valve Rod	1
49	Spring	1
50	Relief Valve A'Ssy	1
51	Nut	1
52	Pressure Valve Screw	1
53	Pressure Adjusting	1
54	Nylon Nut	7
55	Cylinder	1
56	Suction Chamber	1
57	Outlet Chamber	1
58	Connector	1
59	Pressure Gauge	1
60	High Pressure Hose	1
61	Suction Hose	1
62	Clip	2
63	Overflow Hose	1
64	Suction Hose	1
65	Filter	1
66	Engine Stand	1
67	Joint	2
68	Screw	2
69	Screw	2
70	Screw	2
71	Frame	1
72	Handle	1
73	Handle Rubber	1
74	Screw	10
75	Roller For Pvc Hose	1
76	Roller	1
77	Pvc	1
78	Joint	4
79	Screw	4
80	Fixed Plate	1



TAKE BACK YOUR YARD

Enjoy the outdoors again.

Tomahawk mosquito foggers deliver the power to eliminate virus-carrying pests, before they ruin outdoor activities for your friends and family. **10x Faster** than manual sprayers, cover 1 acre in less than 30 minutes with **40ft of Reach**. Great for year-round use, Tomahawk Foggers are also an excellent leaf blowing solution. No matter the season, keep your yard pest free and looking great!



Item #: TMD14

**3.7 GALLON TURBO
BACKPACK FOGGER**

www.tomahawk-power.com





SPRAY TODAY ENJOY TOMORROW

Offering *adjustable pressure* from 20 to 70 PSI, Tomahawk Battery Sprayers are perfect for spraying residential and commercial areas! Powered by a superior 7Ah lithium battery with up to **11 hours of life**, spray 6000 ft² in 10 minutes or less!



Item #: eTPS18

**4.75 GALLON BATTERY
BACKPACK SPRAYER**

www.tomahawk-power.com 

TOMAHAWK

PRODUCT CATALOG

COMPACTION



HONDA
ENGINES

3,550 lbs/ft Vibratory Rammer
Part#: TR68H

3.6 HP Honda GXR120 Engine
Easily achieve a 100% compaction rating
3-in-One Fuel System with carburetor protection
13" x 11" plate for narrow trenches and corners
3 Year Engine Warranty & 1 Year Product Warranty



HONDA
ENGINES

3,400 lbs/ft Plate Compactor
Part#: TPC90H

5.5 HP Honda GX160 Engine
Easily achieve a 100% compaction rating
22" x 20" cold, rolled steel beveled base plate
Includes 3.5 gallon water tank for asphalt compaction
3 Year Engine Warranty & 1 Year Product Warranty



HONDA
ENGINES

KOHLER
ENGINES

3,000 lbs/ft Plate Compactor
Part#: TPC80 & TPC80H

6 HP Kohler CH260 & 5.5 HP Honda GX160 Engines
Easily achieve a 100% compaction rating
16.5" x 21.5" plate for narrow trenches and corners
Optional Honda Engine model: TPC80H
3 Year Engine Warranty & 1 Year Product Warranty

FINISHING



6.5 Gal Backpack Concrete Sprayer
Part#: TCS6.5

Maintain constant, adjustable pressure up to 450 PSI
Achieve superior concrete finishes with even spraying
Spray 15,000 sq ft in less than 10 minutes
Compatible with major manufacturer wands
1 Year Product Warranty



HONDA
ENGINES

1.6 HP Vibratory Concrete Screed
Part#: TVSA-H

1.6 HP Honda GX35 Engine
Aluminum Magnesium blades available from 8ft - 14ft
Finish concrete 4X faster than other screed methods
360° adjustable handle placement
3 Year Engine Warranty & 1 Year Product Warranty



HONDA
ENGINES

6" Early Entry Green Concrete Saw
Part#: TFS6H

5.5 HP Honda GX160 Engine
Maximum cutting depth of 1 3/16 inches
OSHA compliant vacuum port for dust collection
Includes 6" early entry concrete blade
3 Year Engine Warranty & 1 Year Product Warranty

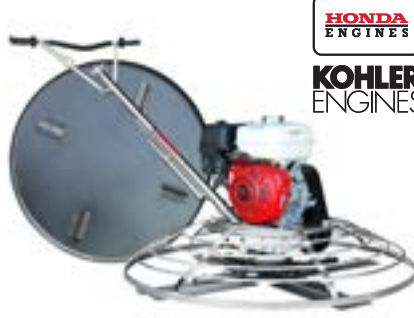
FINISHING



HONDA
ENGINES

1.6HP Backpack Concrete Vibrator
Part#: TVIBH + TVW10-P

1.6 HP Honda GX35 engine
Consolidation with speeds of 10,000-12,000 VPM
Quick Connect centrifugal clutch vibrator
1" and 2" Diameter Whips Available in 10ft Length
3 Year Engine Warranty & 1 Year Product Warranty



HONDA
ENGINES

KOHLER
ENGINES

36" & 46" Concrete Power Trowel
Part#: TPT36H/K & TPT46H/K

6 HP/14HP Kohler & 5.5HP/8.5HP Honda Engines
Adjust trowel blade pitch from 0-28°
60-115 RPM rotor speed for superior concrete finishes
Includes float pan and trowel blades
3 Year Engine Warranty & 1 Year Product Warranty



HONDA
ENGINES

8" Gas Powered Concrete Scarifier
Part#: TSCAR8H

5.5 HP Honda GX160 Engine
Remove traffic lines at 800 - 1,000 linear ft/hr
Tungsten Carbide Blade Kit Available
OSHA approved dust port for silica vacuum removal
3 Year Engine Warranty & 1 Year Product Warranty

HAVE QUESTIONS?

Contact us. *We're here to help!*

Email us at sales@tomahawk-power.com

10% OFF

USE CODE

SAVE10

AT CHECKOUT FOR

10% OFF YOUR ORDER AT

WWW.TOMAHAWK-POWER.COM

POWER / WELDING

INVERTER SERIES



2000 Watt Inverter Generator
Part#: TG2000i

2000 Max Watts, 1600 Rated Watts
Run Time of 8 hours on 1 gallon of gas
OSHA and GFCI Compliant
Parallel technology capable for double the power
2 Year Product Warranty

INVERTER SERIES



210 Amp Portable Welder Generator
Part#: TWG210A

Steady 50 - 210 Amp DC welding output
60% Duty Cycle for extended use
Suitable for welding rods from 6010 to 7024
Electric Key Start with battery included
2 Year Product Warranty



7000 Watt Generators
Part#: TG7000

7000 Max Watts, 5500 Rated Watts
Voltage Selector gives Full Wattage for 120V or 240V
Run Time of 8 hours at 50% Load
OSHA and GFCI Compliant
2 Year Product Warranty

PEST CONTROL



3.7 Gallon 3HP Backpack Fogger
Part#: TMD14

Turbo Boosted Pump with 40ft + Horizontal Reach
Sprays 1 acre in 30 minutes
10X Faster than Manual Pump Sprayers
Converts to Leaf Blower with 200 MPH Air Velocity
1 Year Product Warranty



4.75 Gallon Battery Power Sprayer
Part#: eTPS18

Reach Up to 30ft Horizontal Reach
Sprays 6000 sq ft in 10 minutes
10X Faster than Manual Pump Sprayers
70 PSI Commercial Grade Pump
1 Year Product Warranty



5 Gallon Backpack Power Sprayer
Part#: TPS25

Reach Up to 30ft Horizontal Reach
Sprays acres in 10 minutes
10X Faster than Manual Pump Sprayers
50-435 Adjustable PSI Commercial Grade Pump
1 Year Product Warranty

AND MORE



4 Gal. Backpack Fertilizer Spreader
Part#: TGS30

Reach up to 30ft Horizontally
Sprays 1 acre in 30 minutes
20X Faster than push spreaders
Converts to Leaf Blower with 200 MPH Air Velocity
1 Year Product Warranty

HONDA
ENGINES



3" Full Trash Water Pump
Part#: TW3H

Moves liquids at a rate up to 375 gal/min
Handle solids up to 1.5"
Silicone carbide seals and a chrome plated volute
8 HP engine protected by rugged all purpose frame
3 Year Engine Warranty & 1 Year Product Warranty



Commercial 38" Push Sweeper
Part#: TOS38

Collect up to 14.5 gallons of dust and debris
Can be used indoors & outdoors on wet or dry surfaces
Includes integrated airflow control and fine dust filter
Lightweight design, capable of fitting through doorways
1 Year Product Warranty

ASSEMBLED IN THE
USA
PARTS SOURCED GLOBALLY

* All coupons in this manual are valid only for orders placed on www.tomahawk-power.com, unless otherwise noted. Coupon codes may only be used once per customer and may not be combined with any other offer. Coupons may expire at any time without notice.

(866) 577-4476

www.tomahawk-power.com



Power Your World

Tomahawk understands to keep a job-site running smoothly the proper equipment and spare parts are needed at the drop of a hat. With same day shipping and faster delivery times, count on Tomahawk to keep you powered throughout the day! With long lasting parts and engines, Tomahawk equipment will be the star of your fleet for years to come. Visit www.tomahawk-power.com to get started today!

TOMAHAWK

Tomahawk Power, LLC
San Diego, CA

Sales Support
(866) 577-4476
sales@tomahawk-power.com

Equipment Support
(866) 577-4476
support@tomahawk-power.com

www.tomahawk-power.com



FACEBOOK
facebook.com/TomahawkPowerUSA

YOUTUBE
youtube.com/TomahawkPower

INSTAGRAM
[@tomahawkpower](https://instagram.com/tomahawkpower)

