



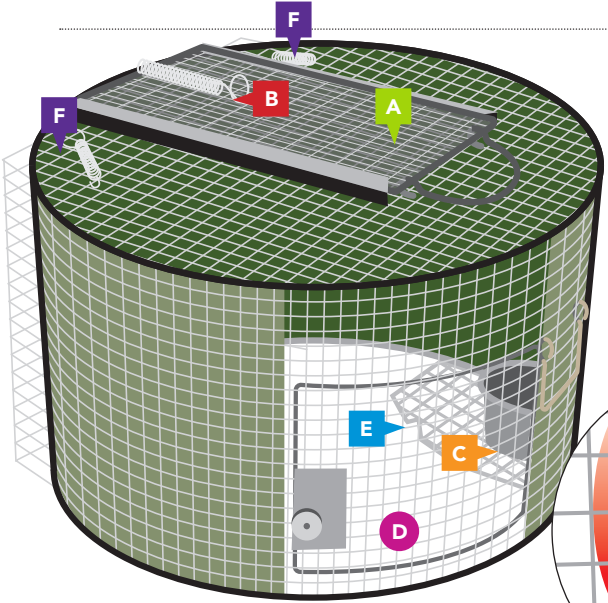
**Tomahawk** llc.  
L I V E • T R A P

**One Year**  
FACTORY WARRANTY



*Mfg* Animal  
Equipment Since  
**1926**  
www.tomahawk.com

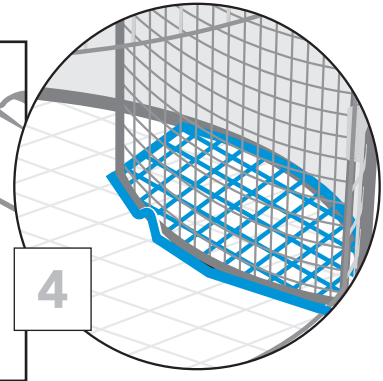
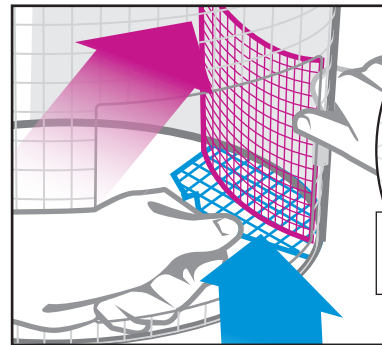
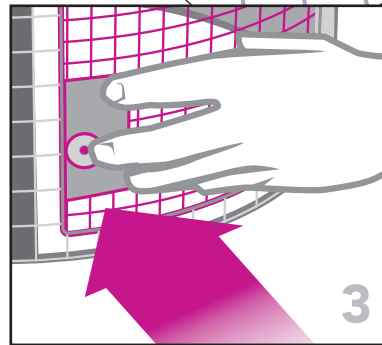
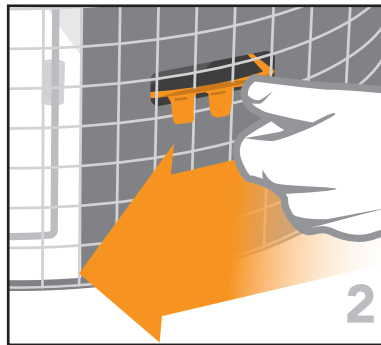
# Tomahawk Roundhouse Trap



- A Release Door
- B Spring Clip
- C Food/water Dish
- D Trap Door
- E Trigger Panel
- F Spring Clips for Transfer Cage
- G Trigger Panel

## Set the Trap

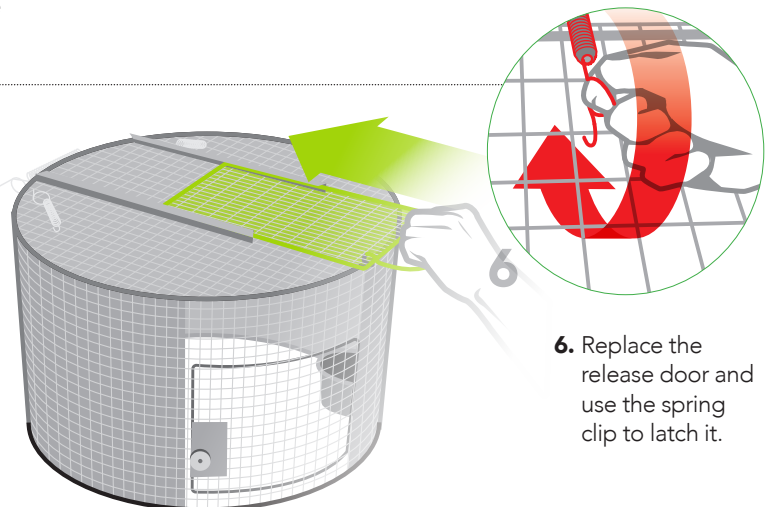
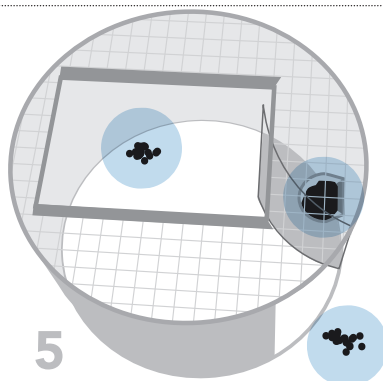
**1.** Place the trap in trapping position by setting it on the ground with release door facing up. Unhook the spring clip from the release door, and slide door open to gain access to the inside of the trap.



- 2.** Make sure food/water cup is attached to the trap before proceeding to step 3. It may have been dislodged during shipping. If so, put cup back by placing into the green plastic cut-out, and slide cup grooves over the trap wire from left to right until it's firmly attached.
- 3.** Locate the trap door which is on the side of the trap. Push the trap door open and into the trap pushing on or near the sheet metal portion of the door to dislodge it from the magnet. Swing the door in just past the trigger panel.

**4.** Locate the trigger panel which is attached to the bottom of the trap. One corner of the trigger panel is rounded with a hump pointing up. With the trap door open, reach into the trap and lift the trigger panel until it comes into contact with the door. Let the door ease back toward the closed position until it catches the hump on the trigger panel. Your trap is now set.

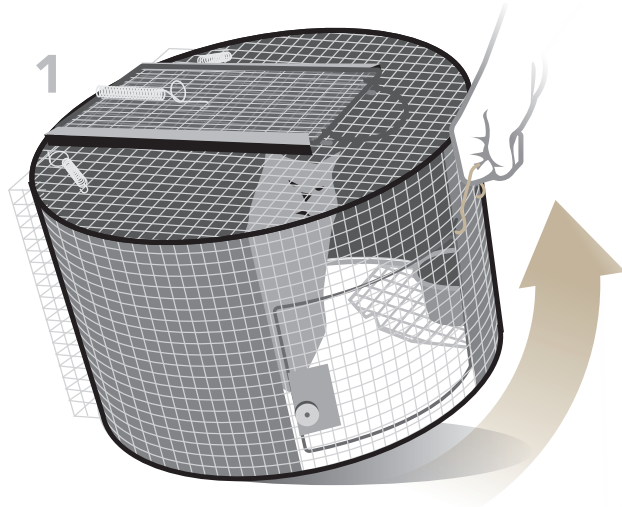
- 5.** Place food in the food bowl as well as a small amount near the trap door and inside the trap opposite the trap door. This will draw the cat into the trap to find the food in the tray. *Food only in the cup may confuse some cats who will scratch at the trap door and not enter.*



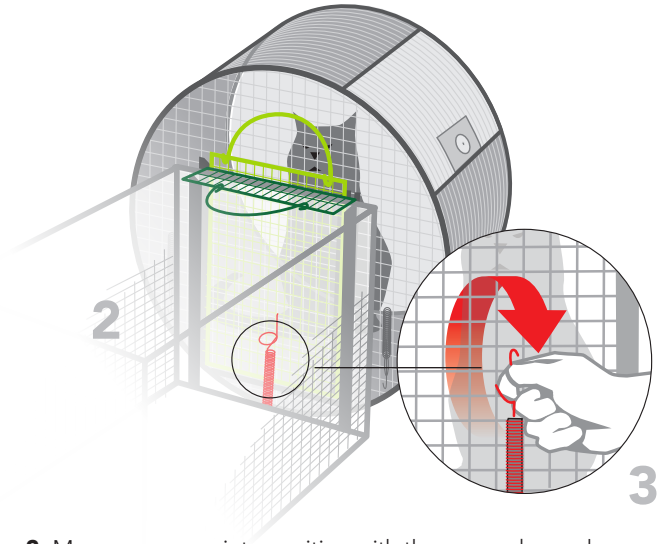
**6.** Replace the release door and use the spring clip to latch it.

**Note:** Practice the transfer procedure before you actually transfer a cat so you are familiar and comfortable with the process.

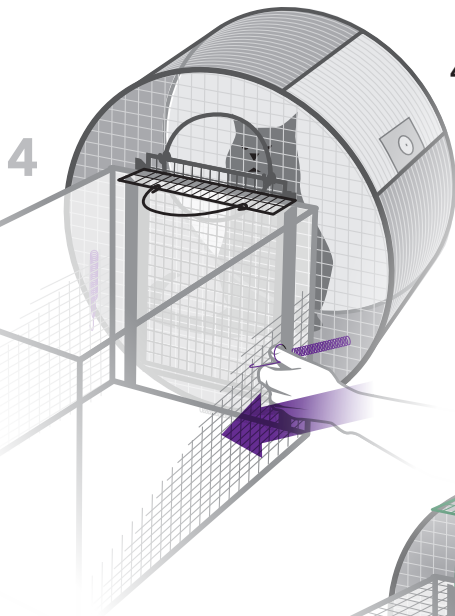
## Transferring Your Cat to a Cage



1. Move the trap in the upright position by taking hold of the square handle located on the side of the trap and lift up. Set the trap down on the trap foot which is attached to the side opposite the square handle.



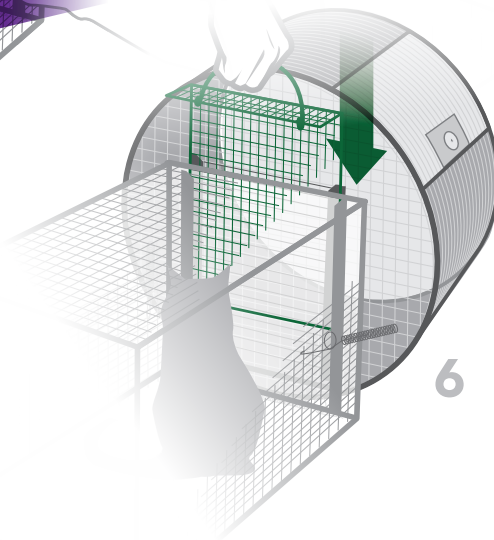
2. Move your cage into position with the cage release door facing the roundhouse release door. The roundhouse release door has the half-round handle attached to it.
3. Unhook the roundhouse release door spring clip but leave the roundhouse release door closed.



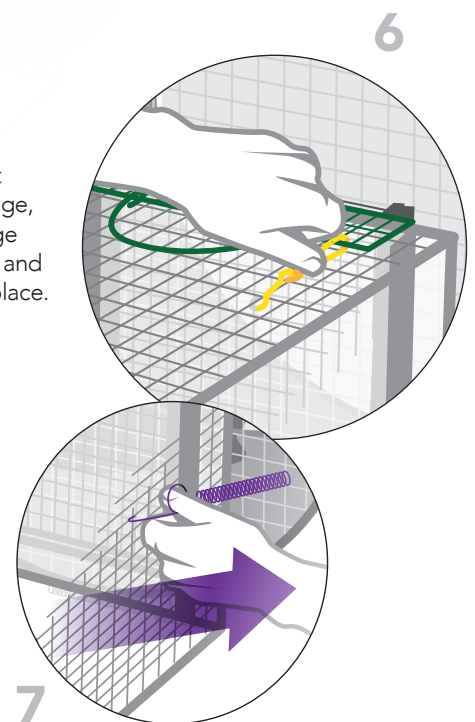
4. Use the extra spring clips located to the left and right of the release door on the roundhouse trap to attach your cage. *Be careful not to attach the spring clips so tight that you cannot open the release doors of the trap and cage.*



5. Open the roundhouse release door then partially open the cage release door being careful not to completely remove it.



6. Once the cat enters the cage, close the cage release door and latch it into place.



7. Unhook the roundhouse spring clips from your cage.



DEPENDABLE. TOUGH.  
**TOMAHAWK**

Call: 800-272-8727 | Online: [www.livetraps.com](http://www.livetraps.com)