

SURMISE

SPEEDPRO XT

*Fast-acting weed control
with extended residual.*

ACTIVE INGREDIENTS

Glufosinate – Group 10
Pelargonic acid – Group 27
Imazethapyr – Group 2

% ACTIVE INGREDIENTS

Glufosinate-ammonium 10.0%
Ammonium-nonanoate 11.08%
Imazethapyr-ammonium 3.18%

FORMULATION

Soluble liquid concentrate

CHEMICAL FAMILY

Phosphinic acid, fatty acid,
imidazolinone

BRAND ALTERNATIVE

Proprietary formulation

MODE OF ACTION

Glutamine synthase
inhibitor, HPPD inhibitor
and ALS inhibitor

RESTRICTED USE

No

SIGNAL WORD

Warning

PACKAGING

12 x 1 qt, 4 x 1 gal,
2 x 2.5 gal

LABELED USES

Driveways, patios,
sidewalks, paved areas,
playgrounds and mulched
areas, rights-of-way, cart
paths, hardscapes,
industrial areas, fence
rows, and other
non-crop sites



With **Surmise® SpeedPro XT**, you can harness the power of three modes of action and at least three months of control. **Surmise SpeedPro XT** combines the broad-spectrum power of glufosinate and enhanced speed of pelargonic acid with the long-lasting control of imazethapyr. This powerful trifecta provides quick knockdown and superb non-selective control of annual and perennial weeds – broadleaf, grass and sedges – with outstanding residual.

Surmise SpeedPro XT is an excellent alternative to glyphosate herbicides. You get speed-of-control, a lower usage rate per acre, and excellent systemic control – an ideal solution for weed management along driveways, parking lots, right-of-way areas, fence rows, and a variety of other non-crop areas.

Do not use Surmise SpeedPro XT on desirable foliage or young plants, fruit or vegetable plants, in lawns or for lawn renovations, or in areas that will be planted or seeded within three months.

PRODUCT BENEFITS

- Quick knockdown, excellent systemic control
- Residual control for at least 3 months
- Provides control of a wide variety of emerged annual and perennial broadleaf weeds, grasses and sedges



*Fast-acting weed control
with extended residual.*

Surmise SpeedPro XT vs RM43®

Initial application July 13, 2020 • Selma, NC

7 DAYS AFTER TREATMENT



Surmise SpeedPro XT
@ 6.4 fl oz/1000 sq ft



RM43
@ 7.4 fl oz/1000 sq ft

28 DAYS AFTER TREATMENT



Surmise SpeedPro XT
@ 6.4 fl oz/1000 sq ft



RM43
@ 7.4 fl oz/1000 sq ft

42 DAYS AFTER TREATMENT

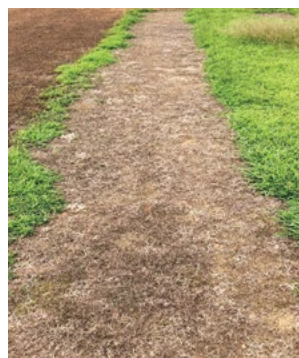


Surmise SpeedPro XT
@ 6.4 fl oz/1000 sq ft



RM43
@ 7.4 fl oz/1000 sq ft

84 DAYS AFTER TREATMENT



Surmise SpeedPro XT
@ 6.4 fl oz/1000 sq ft



RM43
@ 7.4 fl oz/1000 sq ft

